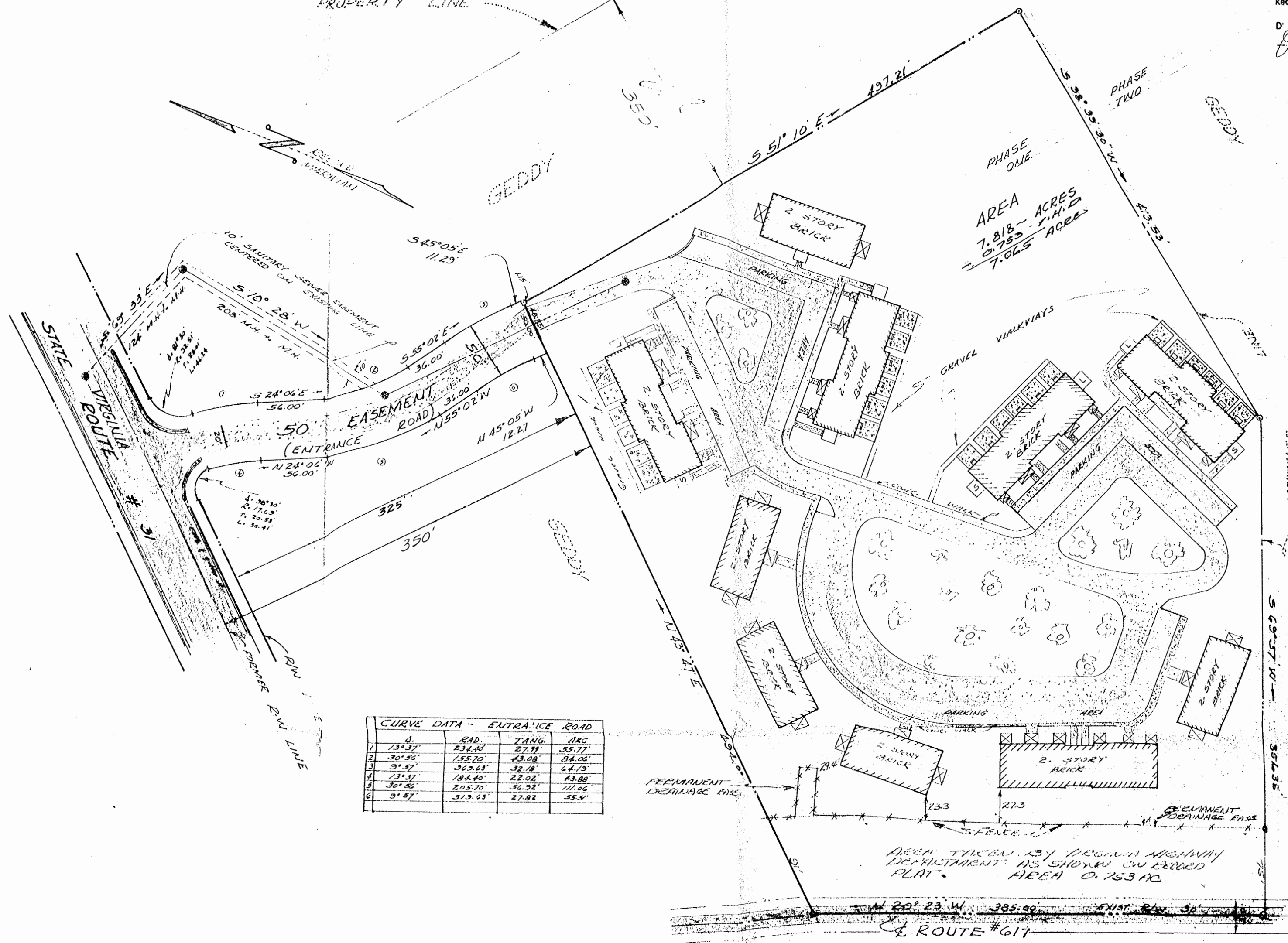


Recorded 21st day of Oct. 1975
 in
 D. B. No. 52, pages 676
 J. C. Clarke, Clerk

WALSINGHAM ACADEMY
 PROPERTY LINE



AREA
 7.818 - ACRES
 0.783 - F.M.D.
 7.065 - ACRES

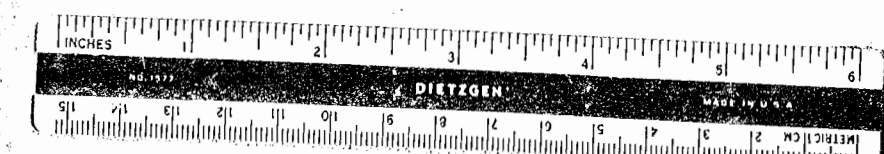
CURVE DATA - ENTRANCE ROAD

Δ	RAD.	TANG.	ARC
1	13° 37'	234.40	27.91
2	30° 36'	155.70	43.08
3	9° 57'	363.65	32.18
4	13° 31'	184.40	22.02
5	30° 36'	205.70	56.32
6	9° 57'	315.65	27.82

AREA TAKEN BY VIRGINIA HIGHWAY
 DEPARTMENT IS SHOWN ON LERRED
 PLAT. AREA 0.163 AC

SURVEY OF
 PHASE ONE
VILLAGE GREEN APARTMENTS INC.
 CITY OF WILLIAMSBURG VIRGINIA
 SCALE 1" = 50'

APRIL 8, 1969
 REVISION 7-21-70
 10-8-70 RFR
 REVISION 16 SEPT. 1975
 TO SHOW Y.M.D. TABLE



VINCENT D. WILKINS SR. & ASSOCIATES
 WILLIAMSBURG VIRGINIA
 LAND SURVEYORS