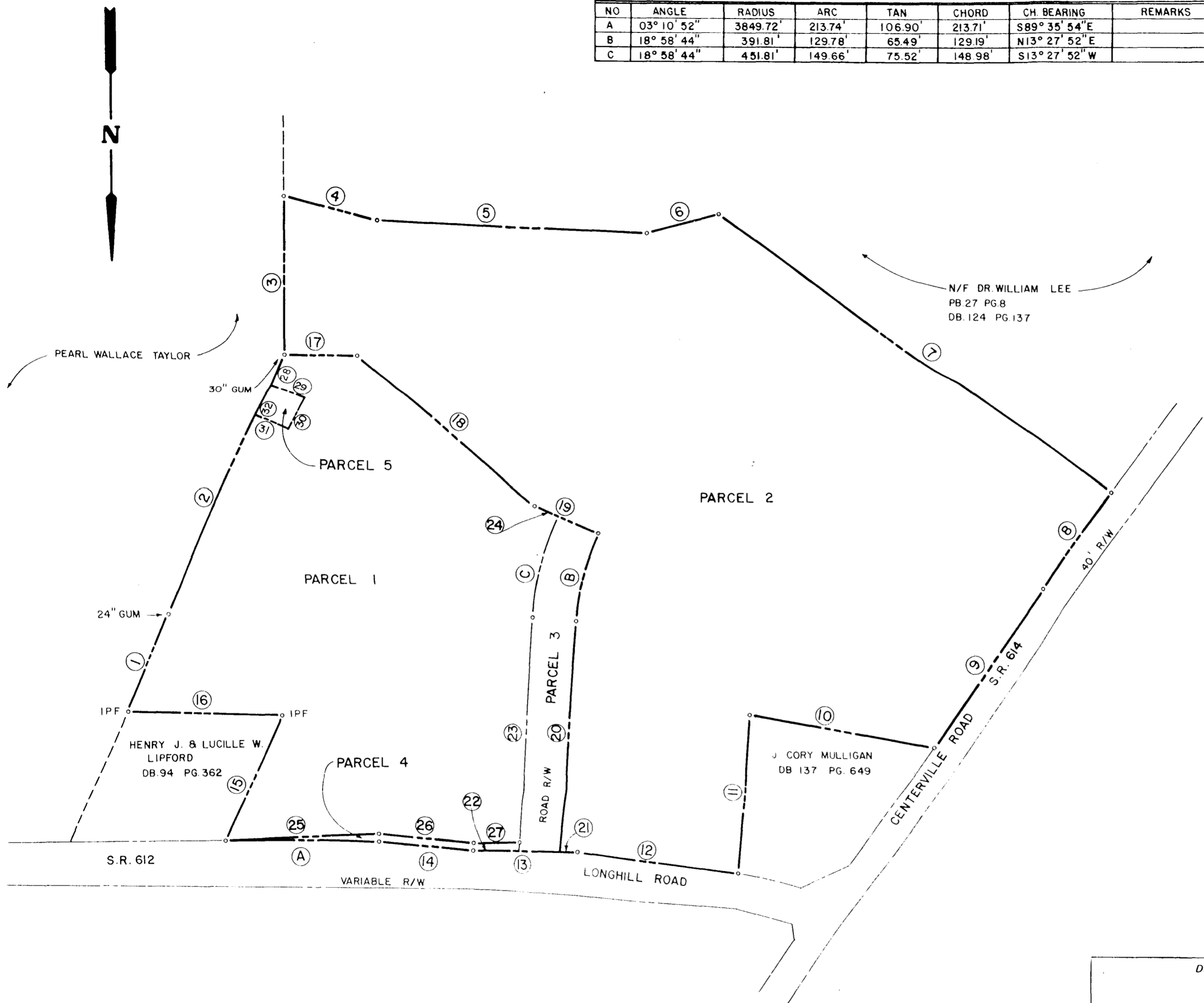


CURVE DATA CHART

See DB 7 1229
Recorded 7/25/75

NO	ANGLE	RADIUS	ARC	TAN	CHORD	CH BEARING	REMARKS
A	03° 10' 52"	3849.72'	213.74'	106.90'	213.71'	S89° 35' 54"E	
B	18° 58' 44"	391.81'	129.78'	65.49'	129.19'	N13° 27' 52"E	
C	18° 58' 44"	451.81'	149.66'	75.52'	148.98'	S13° 27' 52"W	

NO.	BEARING	DISTANCE
1	S 23° 25' 19" W	147.51'
2	S 22° 54' 15" W	404.51'
3	S 00° 00' 42" W	220.61'
4	N 75° 11' 08" W	133.08'
5	N 89° 15' 51" W	377.50'
6	S 80° 06' 25" W	102.33'
7	N 54° 15' 50" W	680.04'
8	N 36° 48' 23" E	168.05'
9	N 34° 14' 09" E	267.81'
10	S 79° 44' 37" E	259.03'
11	N 03° 58' 52" E	226.90'
12	S 83° 29' 56" E	226.89'
13	S 89° 51' 27" E	149.61'
14	S 84° 51' 57" E	133.22'
15	S 22° 23' 20" W	210.26'
16	N 87° 53' 09" E	211.75'
17	N 90° 00' 00" W	101.40'
18	N 49° 16' 42" W	330.00'
19	N 67° 02' 46" W	96.26'
20	N 03° 58' 30" E	330.63'
21	S 89° 51' 27" E	24.33'
22	S 89° 51' 27" E	65.14'
23	S 03° 58' 30" W	334.65'
24	N 67° 02' 46" W	36.26'
25	N 87° 43' 38" E	214.22'
26	S 84° 52' 17" E	133.57'
27	N 87° 31' 11" W	65.41'
28	N 22° 54' 15" E	49.51'
29	N 67° 05' 45" W	50.00'
30	N 22° 54' 15" E	50.00'
31	S 67° 05' 45" E	50.00'
32	S 22° 54' 15" W	50.00'



PARCEL 1	6.2894 AC.
PARCEL 2	12.8519 AC.
PARCEL 3	0.6507 AC.
PARCEL 4	0.0673 AC.
PARCEL 5	0.0574 AC.
TOTAL AREA	19.9167 AC.

Recorded 25th day of July 1975
in
D. B. No. 3-2 pages 81
J. Martin Clerk

DEWARD M. MARTIN & ASSOCIATES, INC.
ENGINEERS, PLANNERS & SURVEYORS
P.O. BOX 523, TOANO, VIRGINIA 23168

PLAT SHOWING VARIOUS
PARCELS OF LAND STANDING IN THE NAME
OF HERITAGE BUILDERS INC.
BERKELY MAGISTERIAL DISTRICT

JAMES CITY COUNTY VIRGINIA

DES P.C.S.	JOB NO L10	
DRWN R.S.P.	DATE JUNE 10, 1975	SHEET NO
APP D.M.M.	SCALE 1" = 100'	OF SHEET

