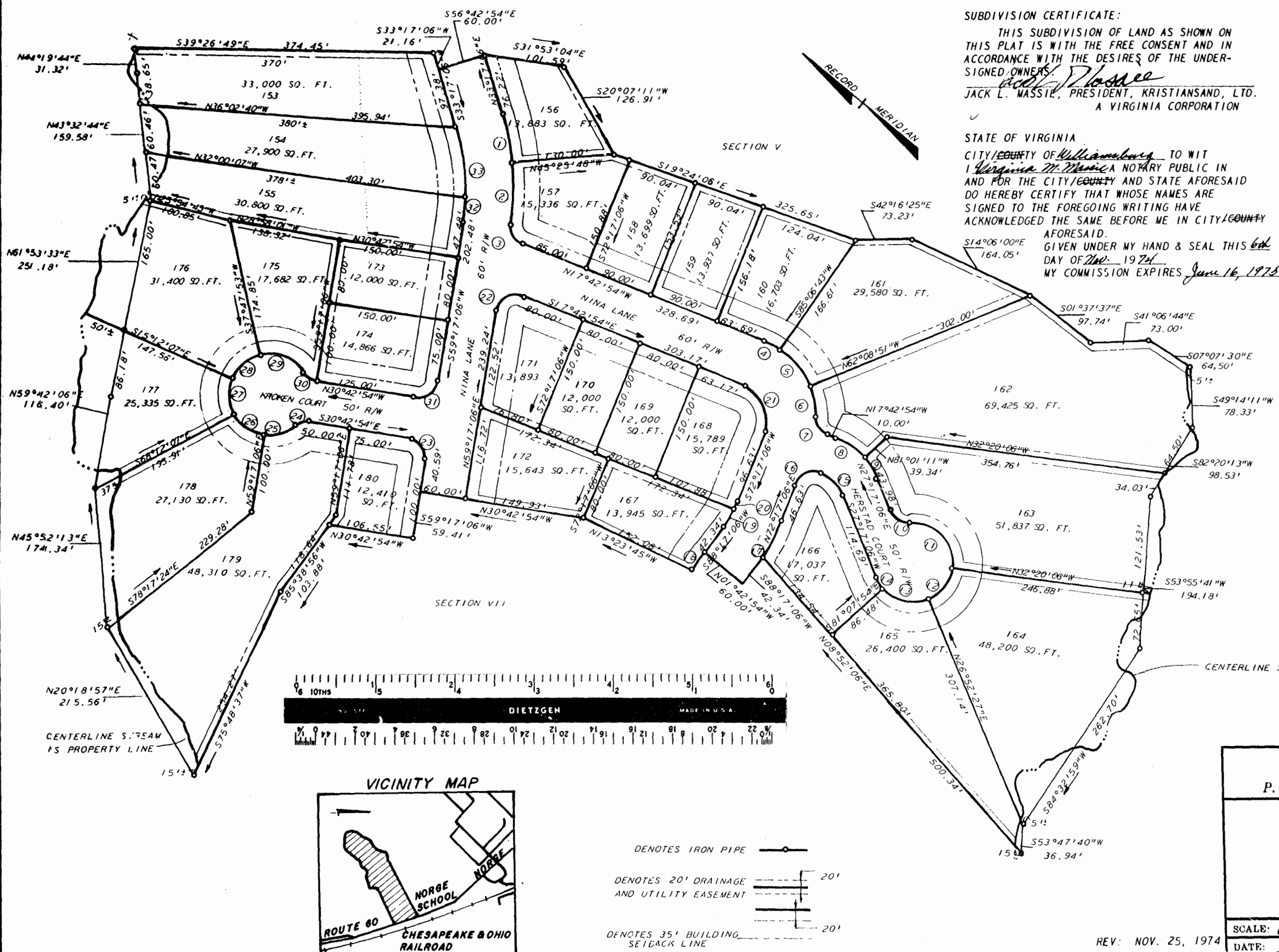


NO.	DELTA	RADIUS	LENGTH	TANGENT	CHORD	CHORD BRG.	NO.	DELTA	RADIUS	LENGTH	TANGENT	CHORD	CHORD BRG.	NO.	DELTA	RADIUS	LENGTH	TANGENT	CHORD	CHORD BRG.			
1	11°17'05"	330.00'	65.00'	32.60'	64.89'	N38°55'39"E	11	100°54'32"	50.00'	88.06'	60.56'	77.11'	N07°12'38"E	23	90°00'00"	25.00'	39.27'	25.00'	39.27'	25.00'	35.36'	S14°17'06"W	
2	13°14'54"	330.00'	76.30'	38.32'	76.14'	N51°11'33"E	12	59°12'33"	50.00'	51.67'	28.41'	49.40'	N87°16'10"E	24	48°11'23"	25.00'	21.03'	17.18'	20.41'	20.41'	20.41'	S54°48'36"E	
3	75°32'00"	25.00'	32.96'	19.37'	30.62'	N20°03'00"E	13	71°59'39"	50.00'	62.83'	36.32'	58.77'	S27°07'44"E	25	48°11'23"	50.00'	42.05'	22.36'	40.82'	40.82'	40.82'	S54°48'36"E	
4	12°49'37"	105.00'	23.51'	11.80'	23.46'	N11°18'06"W	14	18°25'00"	50.00'	16.07'	8.11'	16.00'	S18°04'36"W	26	52°30'47"	50.00'	45.83'	24.66'	44.24'	44.24'	44.24'	S04°27'30"E	
5	32°44'26"	105.00'	60.00'	30.84'	59.19'	N11°28'56"E	15	45°00'00"	46.62'	36.62'	19.31'	35.68'	S04°47'06"W	27	53°00'00"	50.00'	46.25'	24.30'	44.62'	44.62'	44.62'	S48°17'53"W	
6	21°48'46"	105.00'	39.97'	20.23'	39.73'	N38°45'32"E	16	90°00'00"	25.00'	39.27'	25.00'	35.36'	S62°42'54"E	28	53°00'00"	50.00'	46.25'	24.30'	44.62'	44.62'	44.62'	N78°42'02"W	
7	67°22'49"	25.00'	29.40'	16.67'	27.74'	N15°58'31"E	17	16°00'00"	180.00'	50.26'	25.30'	50.10'	N80°17'06"E	29	69°40'36"	50.00'	60.80'	34.80'	57.13'	57.13'	57.13'	N17°21'49"W	
8	26°41'42"	96.62'	45.02'	22.92'	44.61'	N04°22'03"W	18	11°40'51"	130.00'	26.50'	13.30'	26.46'	S82°26'41"W	30	48°11'23"	25.00'	21.03'	11.18'	20.41'	20.41'	20.41'	N06°37'12"W	
9	78°18'18"	96.62'	30.87'	15.57'	30.74'	N18°07'57"E	19	12°00'06"	120.00'	25.14'	12.61'	25.09'	S82°17'03"W	31	90°00'00"	25.00'	39.27'	25.00'	39.27'	25.00'	39.27'	25.00'	N75°42'54"W
10	70°31'44"	25.00'	30.77'	17.68'	28.87'	N07°58'46"W	20	03°59'54"	120.00'	8.37'	4.19'	8.37'	S74°17'03"W	32	6°54'05"	270.00'	32.52'	16.28'	32.50'	32.50'	32.50'	S55°49'54"W	
							21	90°00'00"	45.00'	70.69'	45.00'	63.64'	S27°17'06"W	33	19°05'55"	270.00'	90.00'	45.42'	89.58'	89.58'	89.58'	S42°49'59"W	
							22	103°00'00"	25.00'	44.94'	31.43'	39.13'	S69°12'54"E										



SUBDIVISION CERTIFICATE:
 THIS SUBDIVISION OF LAND AS SHOWN ON THIS PLAT IS WITH THE FREE CONSENT AND IN ACCORDANCE WITH THE DESIRES OF THE UNDERSIGNED OWNERS Jack L. Massie
 JACK L. MASSIE, PRESIDENT, KRISTIANSAND, LTD. A VIRGINIA CORPORATION

SOURCE OF TITLE
 THE PROPERTY SHOWN ON THIS PLAT WAS CONVEYED BY JACK L. MASSIE AND VIRGINIA M. MASSIE, AND PHILLIP T. RUTLEDGE AND EFFIE RUTLEDGE, TO KRISTIANSAND LTD., A VIRGINIA CORPORATION, IN THE CIRCUIT COURT OF JAMES CITY COUNTY, AND RECORDED IN DEED BOOK 140, PAGE 260.

CERTIFICATE OF APPROVAL
 THIS SUBDIVISION AS SHOWN ON THIS PLAT IS APPROVED BY THE UNDERSIGNED IN ACCORDANCE WITH SUBDIVISION REGULATIONS AND MAY BE COMMITTED TO RECORD Chas. H. Cowley 2-19-75
 AGENT OF GOVERNING BODY DATE
 HIGHWAY DEPARTMENT DATE 11-25-74
 HEALTH DEPARTMENT DATE 10-31-74
 STATE OF VIRGINIA, COUNTY OF JAMES CITY:
 IN THE CLERK'S OFFICE OF THE CIRCUIT COURT FOR THE COUNTY OF JAMES CITY, THE MAP SHOWN HEREON WAS PRESENTED AND ADMITTED TO RECORD AS THE LAW DIRECTS.
 TESTE: Juliette C. Clendenen
 DATE: March 11, 1975
 PLAT BOOK 32 PAGE 71

SURVEYOR'S CERTIFICATE:
 TO THE BEST OF MY KNOWLEDGE AND BELIEF ALL OF THE REQUIREMENTS SET FORTH IN THE ORDINANCE FOR APPROVING PLATS OF SUBDIVISION FOR RECORDATION IN JAMES CITY COUNTY, VIRGINIA, HAVE BEEN COMPLIED WITH.
B.D. Littlepage
 B.D. LITTLEPAGE, CERTIFIED LAND SURVEYOR

L. V. WOODSON & ASSOCIATES INC.
 ENGINEERS, SURVEYORS & PLANNERS
 P. O. BOX 633 WILLIAMSBURG, VIRGINIA 23185

KRISTIANSAND SECTION VI
 POWHATAN DISTRICT
 JAMES CITY COUNTY, VIRGINIA

SCALE: 1" = 100'
 DATE: JULY 30, 1974
 DWG. 802-10

REV: NOV. 25, 1974