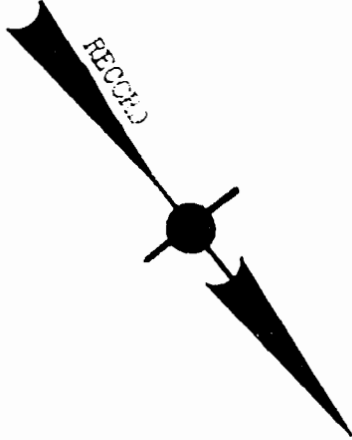
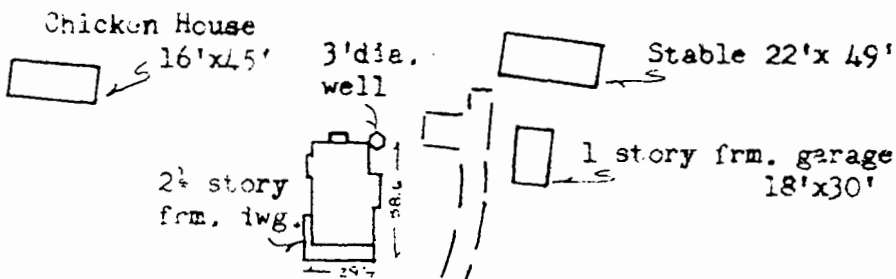


JOHN B. BARNETT, SR.



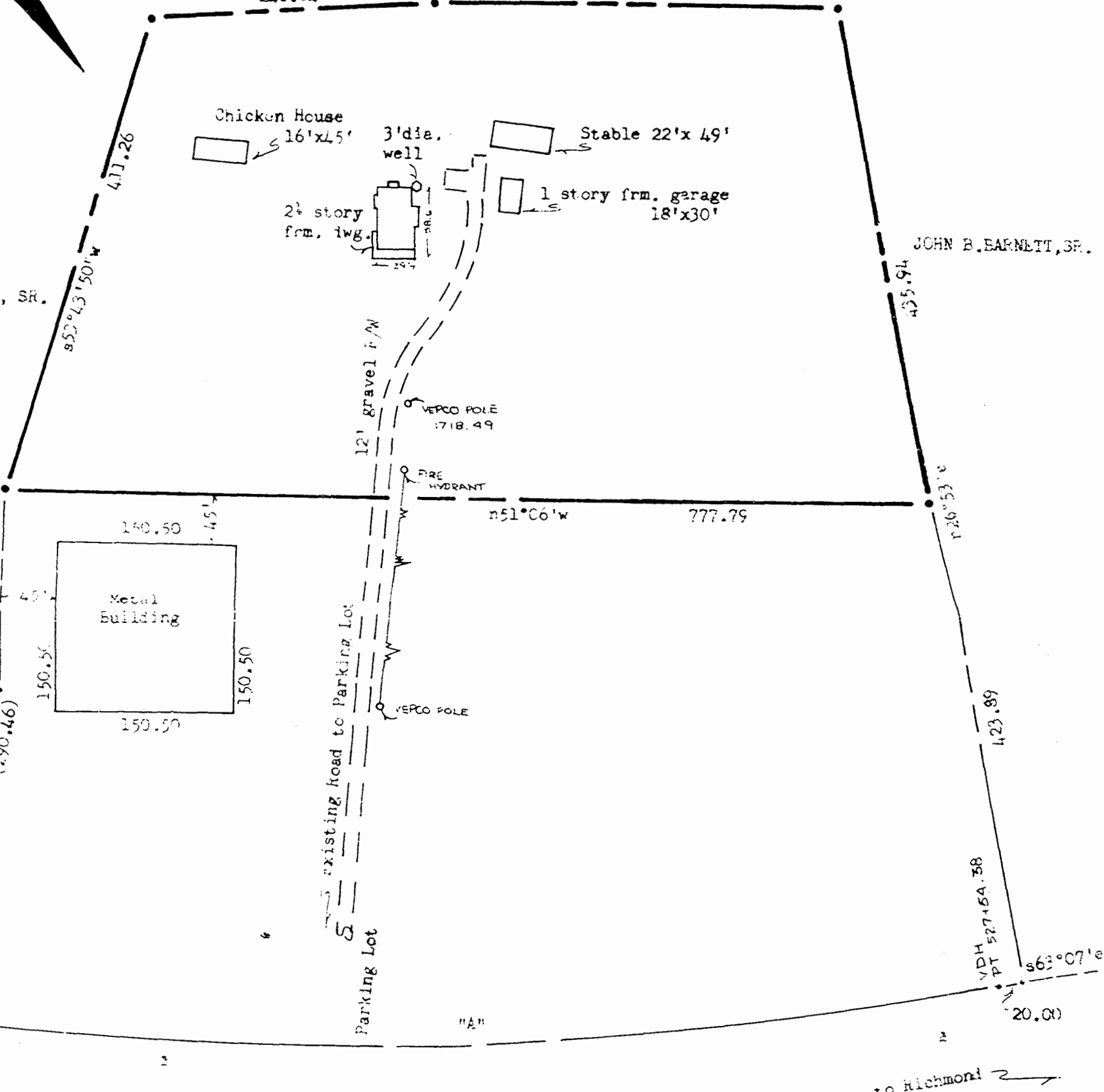
n56°58'10"W
240.84

n51°48'10"W
342.21



JOHN B. BARNETT, SR.

JOHN B. BARNETT, SR.



Cemetery

existing road to Parking Lot

to Richmond

160' R/W

ROUTE # 60

This subdivision is approved by the undersigned in accordance with existing subdivision regulations and may be committed to record.

Signed: *Clair H. Cowley*
Date: *November 27, 1974*



NOTES:

Iron markers at all corners except as noted. Bearings are clockwise.

Ref.: D.B. #95, p. #17,
P.B. #21, p. #31.
VDH Proj. 0050-047-101-c504
P.E. 101 Sh. #9 & #10.

AREA: 6.512 Acres. Recorded *27th* day of *Nov.* 1974

Stephen Stephens

Co. D. B. No. *152* pages *559*
Jubella O. Clarke Clerk

Plat of Part of
"RATCLIFFE"
Part of Property of
JOHN B. BARNETT, SR.
To be CONVEYED to
JOHN B. BARNETT, JR.

Scale: 1" = 100' July 1974
POWATAN DISTRICT, JAMES CITY COUNTY, VIRGINIA

Job #1060B



BOOK 30 PAGE 57