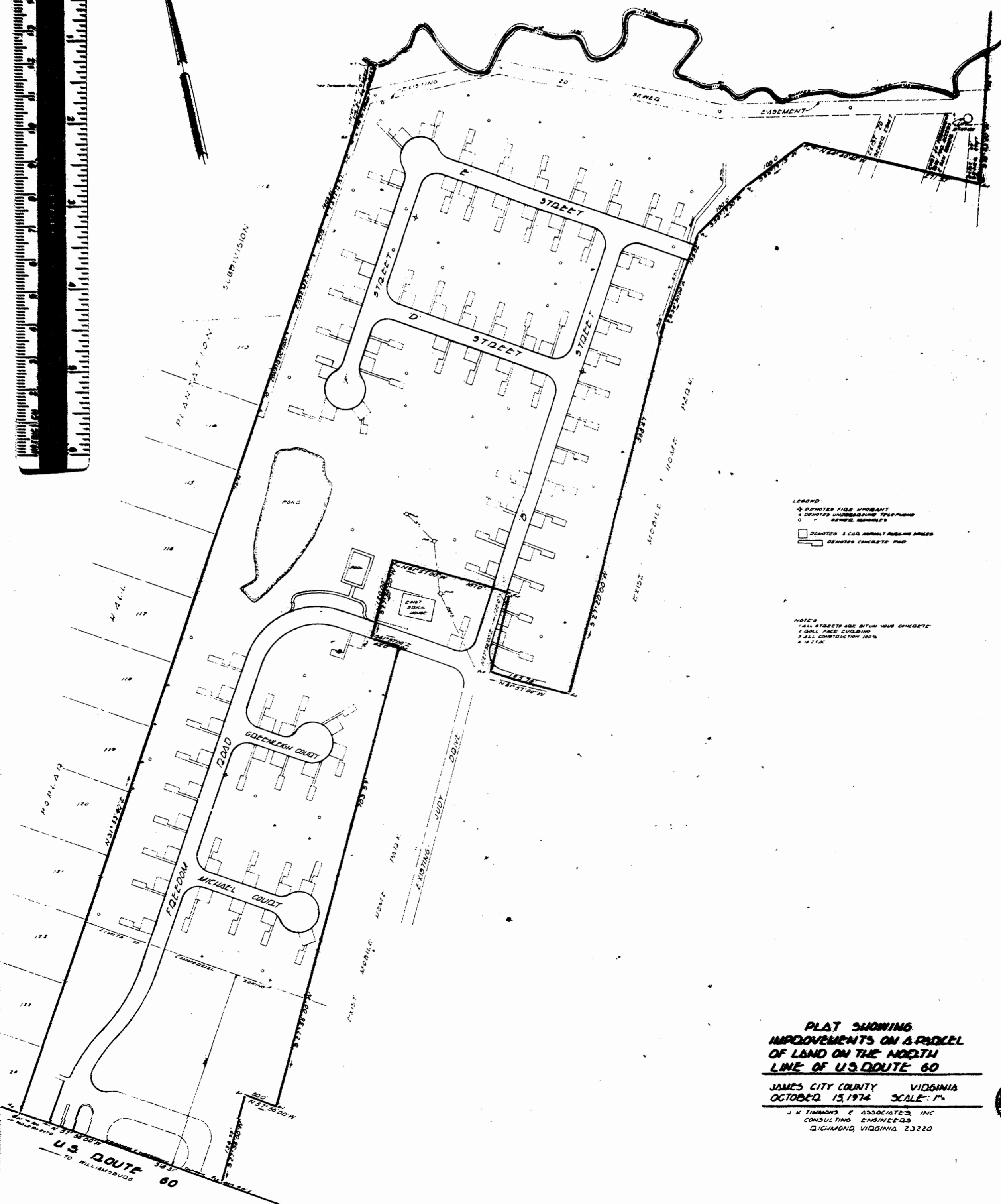


NOW OR FORMERLY BOUND PARTS OF STATE



- LEGEND**
- ✦ DENOTES FIRE HYDRANT
  - ✧ DENOTES UNDERGROUND TELEPHONE SERVICE MANHOLE
  - DENOTES 6" GAS SERVICE MANHOLE
  - DENOTES 6" GAS SERVICE MANHOLE
  - ▭ DENOTES CONCRETE PAD

- NOTES**
- 1. ALL STREETS ARE BITUM ASPHALT
  - 2. GULL FACE CURBING
  - 3. ALL CONSTRUCTION 100% COMPLETE
  - 4. 1/2" = 1'

**PLAT SHOWING IMPROVEMENTS ON A PARCEL OF LAND ON THE NORTH LINE OF U.S. ROUTE 60**

JAMES CITY COUNTY VIRGINIA  
OCTOBER 13, 1974 SCALE: 1" = 100'

J. M. TIMMONS & ASSOCIATES, INC.  
CONSULTING ENGINEERS  
RICHMOND, VIRGINIA 23220



PLAT BOOK 32 PAGE 50  
Recorded 10/30/74 DB 157 P. 89