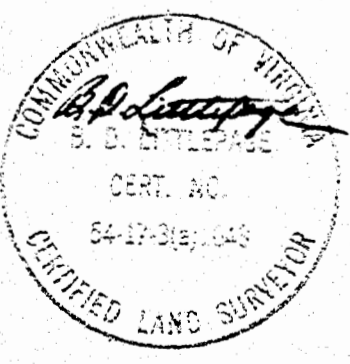
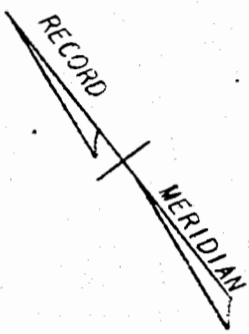
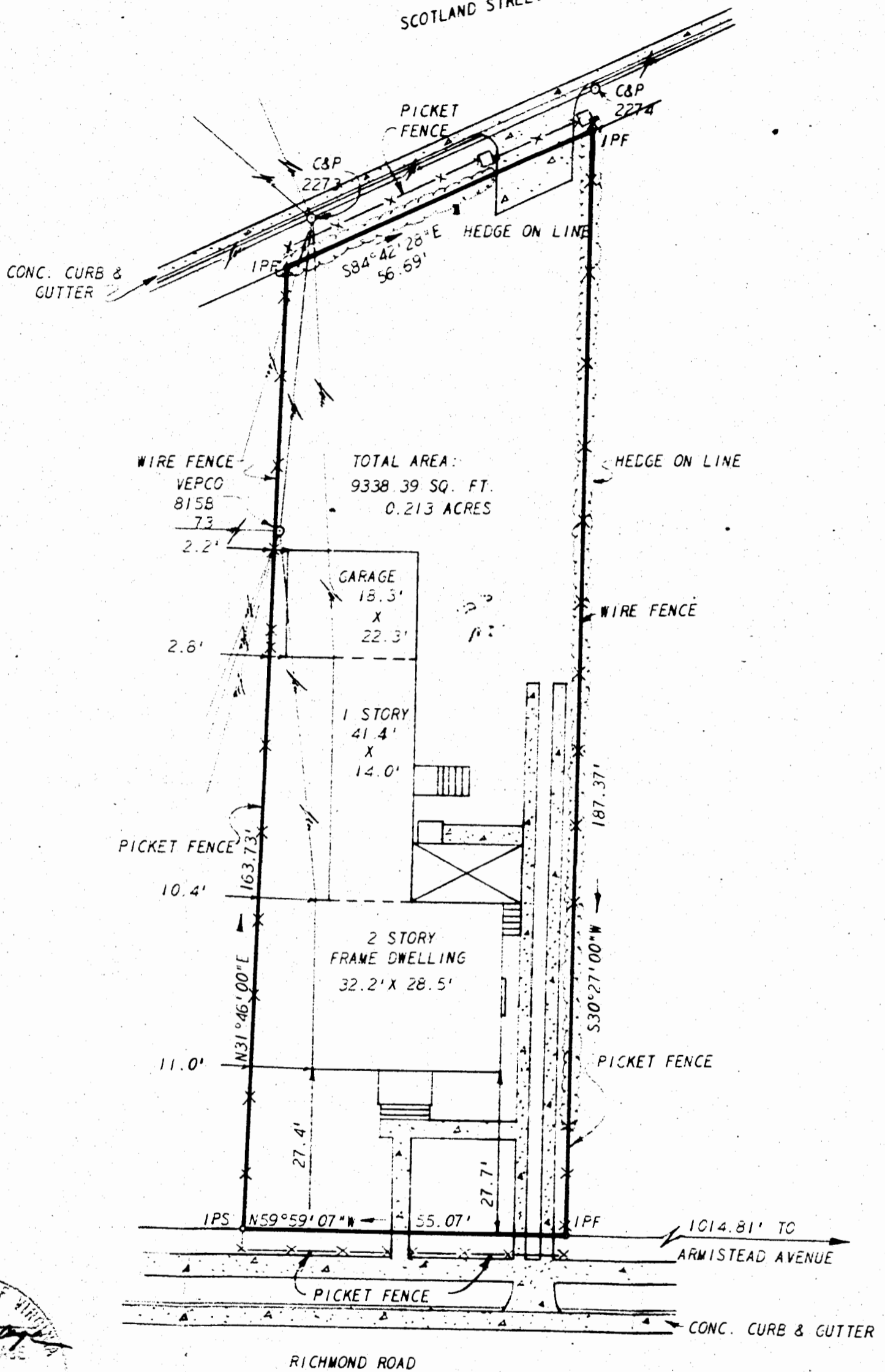


SCOTLAND STREET



PLAT BOOK 32 Page 111  
 Recorded 10/3/74  
 DB 51 Page 602

L. V. WOODSON & ASSOCIATES, INC.		ENGINEERS, SURVEYORS & PLANNERS, P. O. BOX 633		WILLIAMSBURG, VIRGINIA 23185	
LEGEND ○ = IP = IRON PIN, □ = MON = MONUMENT, — = PROPERTY LINE, - - - = CENTERLINE, - - - - = EASEMENT LINE					
A SURVEY FOR CONVEYANCE TO GEORGE STRATIS & GEORGE KOKOLIS 0.214 ACRES KNOWN AS BELER TRACT, TAX PARCEL 24-L-32 LYING IN THE CITY OF WILLIAMSBURG, VIRGINIA					
SCALE: 1" = 20'	REF: PB7/37	CLOSURE	J. O. 1913	DATE SEPTEMBER 9, 1974	AREA 0.214 AC.