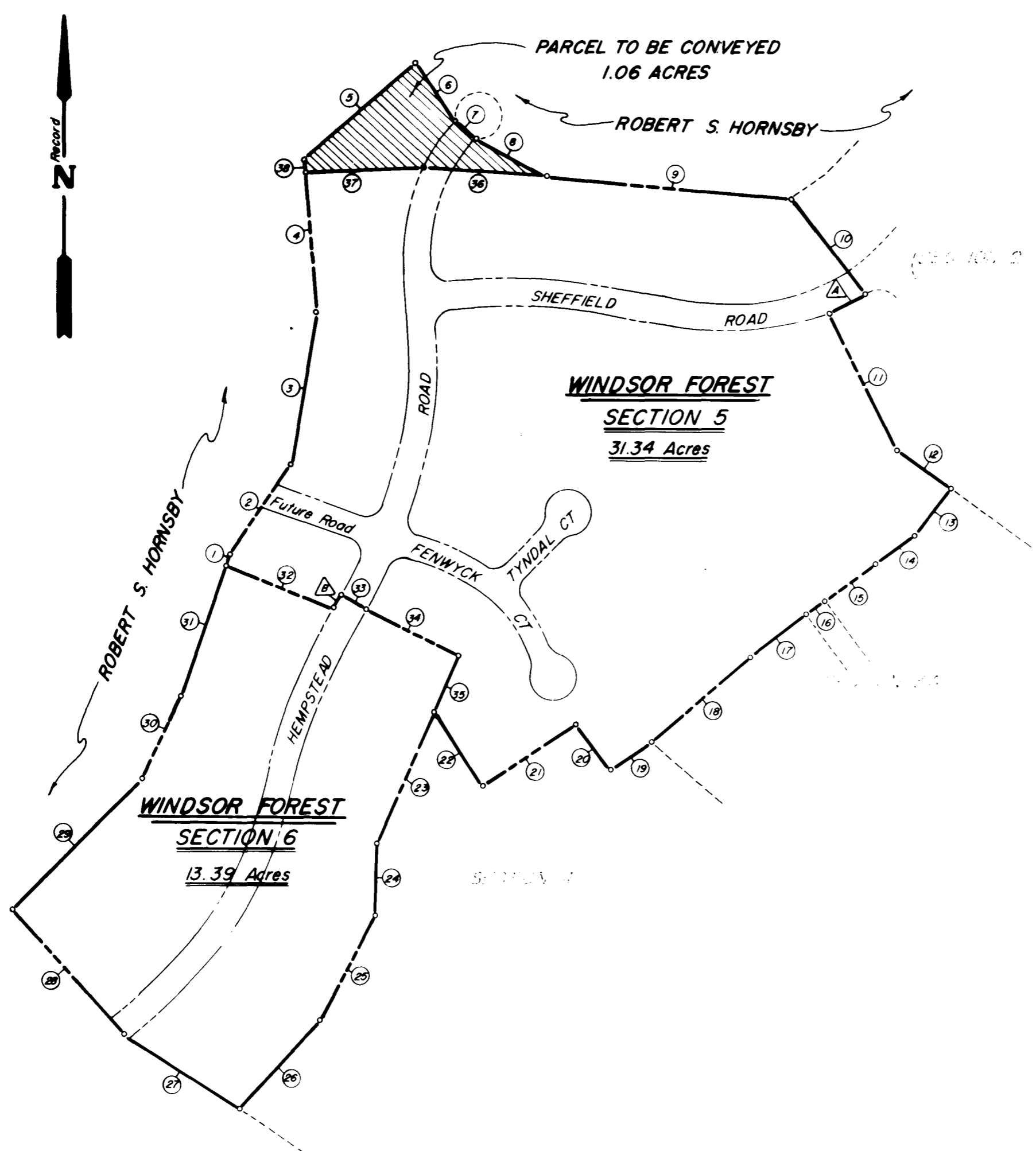


CURVE DATA CHART

NO.	ANGLE	RADIUS	ARC	TAN	CHORD	CH. BEARING	REMARKS
A	08°19'18"	590.00'	85.69'	42.92'	85.62'	S59°47'30"W	R/W Sheffield Rd.
B	01°19'49"	1345.49'	31.24'	15.62'	31.24'	N28°25'45"E	R/W Hempstead Rd.

Recorded 9/24/74  
 OB 156 P. 160

COURSE NO.	BEARING	DISTANCE
1	N19°58'59"E	25.00'
2	N34°04'10"E	222.90'
3	N10°02'00"E	338.63'
4	N04°10'38"W	300.00'
5	N51°01'22"E	314.76'
6	S25°29'29"E	149.19'
7	S50°13'47"E	60.00'
8	S68°53'24"E	178.66'
9	S85°08'04"E	580.16'
10	S37°11'21"E	256.29'
11	S26°12'00"E	324.04'
12	S53°32'35"E	141.94'
13	S36°27'35"W	130.00'
14	S54°42'26"W	98.96'
15	S54°41'20"W	135.00'
16	S54°12'27"W	50.00'
17	S54°43'23"W	150.00'
18	S47°46'49"W	282.06'
19	S55°45'32"W	110.59'
20	N34°59'31"W	122.00'
21	S56°58'34"W	238.50'
22	N33°16'30"W	191.40'
23	S22°14'56"W	300.00'
24	S03°42'29"W	158.79'
25	S26°23'42"W	250.00'
26	S43°46'05"W	263.00'
27	N56°53'58"W	291.49'
28	N41°24'21"W	360.84'
29	N44°22'54"E	393.00'
30	N25°05'22"E	191.00'
31	N19°58'59"E	302.70'
32	N67°00'57"W	249.67'
33	S62°14'10"E	60.00'
34	S62°33'27"E	219.10'
35	S23°28'16"W	130.00'
36	N85°05'04"W	271.00'
37	N87°59'29"E	250.00'
38	N04°10'38"W	25.00'



EDWARD H. MARTIN & ASSOCIATES INC.  
 SURVEYORS & PLANNERS  
 1000 W. MAIN ST. VIRGINIA 22168

PLAT FOR  
 CONVEYANCE OF 1.06 ACRES FROM  
 ROBERT S. HORNSBY  
 TO HERITAGE DEVELOPMENT COMPANY  
 POWHATAN MAGISTERIAL DISTRICT  
 JAMES CITY COUNTY VIRGINIA

DES. P.C.S. JOB NO. 6951-13-II  
 DRWN. G.S.B. DATE. SEPT. 10, 1974 SHEET NO. 1  
 APP. D.M.M. SCALE 1" = 200' OF 1 SHEETS