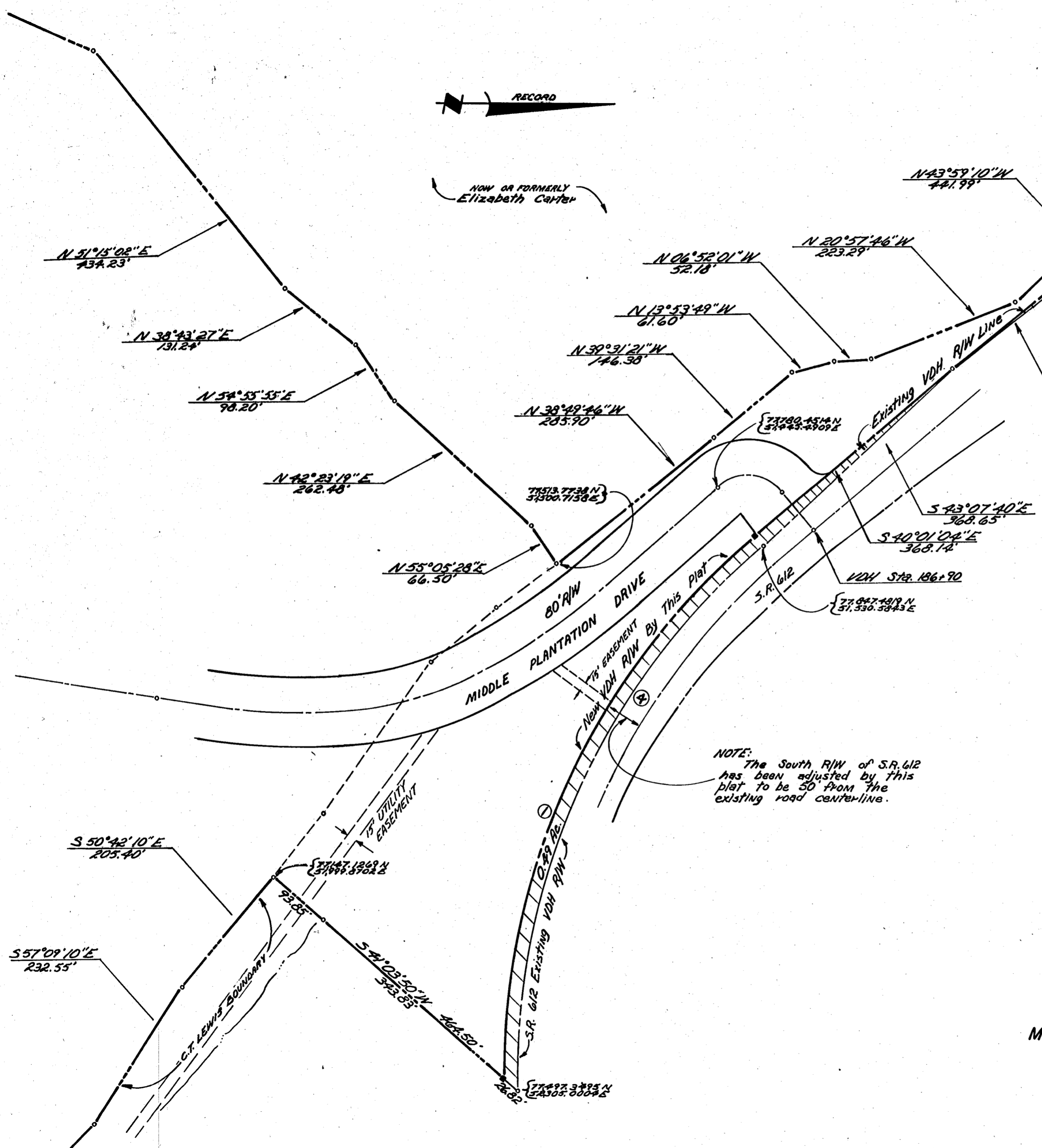


RECORDED 3-27-74
Juliette C. Clarke, Clerk



NO.	ANGLE	RADIUS	ARC	TAN	CHORD	CHORD BEAR	REMARKS
1	50°05'23"	1204.93	878.54	169.56	650.83	S 65°09'28" E	R/W
2	10°45'40"	1095.92	205.83	103.22	205.53	S 52°12'44" E	R/W
3	14°30'07"	1115.92	222.45	141.98	281.69	S 54°04'58" E	R/W
4	37°07'08"	924.23	878.73	471.04	448.89	S 65°40'16" E	R/W

NOTE:
 Area to be dedicated to Virginia Department of Highways for slope maintenance and future widening of S.R. 612. (shown cross-hatched) = 0.64 Ac.

REF: VDH Highway Plans for Rt. 612
 Project 0612-047-105, C-501, Sheet 8 of 9
 Rev. 3-60-70

NOTE:
 The South R/W of S.R. 612 has been adjusted by this plat to be 50' from the existing road centerline.

The fee in and easement for all purposes over all roads shown on this plat is hereby expressly reserved by MIDDLE PLANTATION COUNTRY CLUB, INC., and the recordation of this plat shall not be construed as the dedication of the fee in or easement over such roads to public use.

Approved: *Shamuel McCaughey*
PLAT SHOWING DEDICATION of ADDITIONAL RIGHT-OF-WAY to the VIRGINIA DEPARTMENT of HIGHWAYS from MIDDLE PLANTATION COUNTRY CLUB, INC.
 POWHATAN DISTRICT, JAMES CITY COUNTY, VIRGINIA
 Scale 1" = 100' Jan. 1974
 DEWARD M. MARTIN & ASSOCIATES, INC.
 ENGINEERS, PLANNERS & SURVEYORS
 P.O. BOX 344 WILLIAMSBURG, VA.