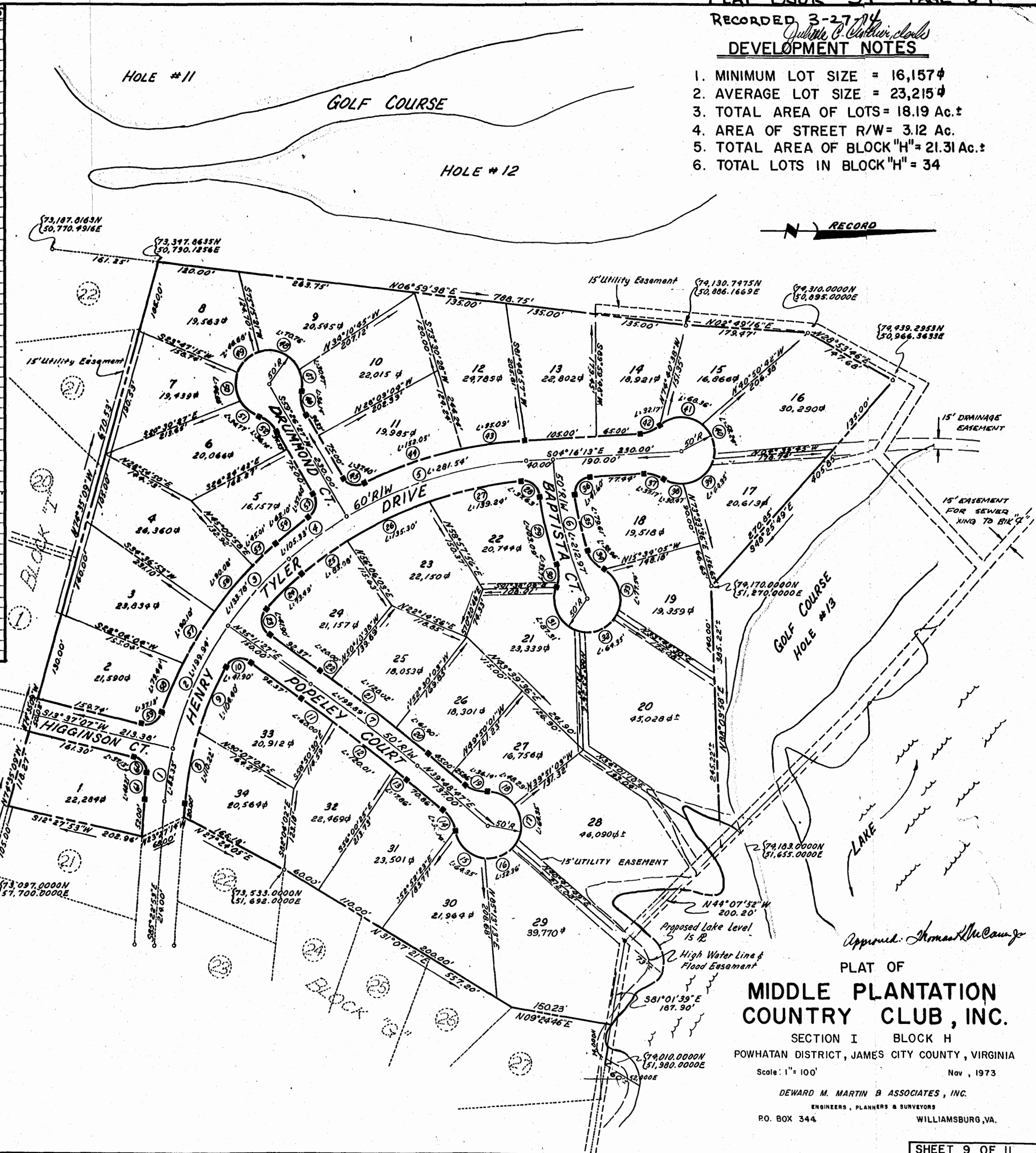


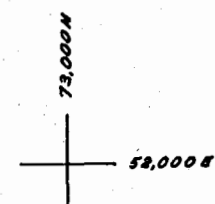
RECORDED 3-27-74
Quinn C. Walker, clerk
DEVELOPMENT NOTES

1. MINIMUM LOT SIZE = 16,157φ
2. AVERAGE LOT SIZE = 23,215φ
3. TOTAL AREA OF LOTS = 18.19 Ac.±
4. AREA OF STREET R/W = 3.12 Ac.
5. TOTAL AREA OF BLOCK "H" = 21.31 Ac.±
6. TOTAL LOTS IN BLOCK "H" = 34

NO.	ANGLE	RADIUS	ARC	TAN	CHORD	CHORD BEAR	REMARKS
1	09°00'00"	531.05'	83.42'	41.80'	83.33'	N40°52'53"W	Lot 4
2	21°34'19"	531.05'	199.94'	101.17'	198.76'	N65°25'44"W	Lot 4
3	14°26'01"	531.05'	133.78'	67.25'	133.43'	N47°35'34"W	Lot 4
4	09°49'00"	613.61'	105.13'	52.69'	105.00'	N35°28'03"W	Lot 4
5	26°17'20"	613.61'	281.54'	143.29'	279.08'	N17°24'53"W	Lot 4
6	18°00'00"	642.28'	212.97'	107.47'	212.00'	N76°13'47"E	Lot 4
7	04°37'20"	2477.64'	139.89'	100.00'	199.84'	N37°30'07"E	Lot 4
8	12°36'15"	501.05'	110.22'	55.33'	110.00'	N79°04'43.5"W	Lot 34
9	11°56'18"	501.05'	104.40'	52.39'	104.21'	N66°48'29"W	Lot 33
10	36°01'47"	25.00'	41.90'	27.78'	37.17'	N12°49'26.5"W	Lot 33
11	01°34'06"	2452.88'	60.00'	30.00'	60.00'	N35°53'30"E	Lot 33
12	02°46'12"	2452.88'	120.01'	60.02'	120.00'	N37°59'39"E	Lot 32
13	00°25'02"	2452.88'	17.86'	8.93'	17.86'	N39°36'16"E	Lot 31
14	41°24'35"	50.00'	36.14'	18.90'	35.36'	N40°31'04.5"E	Lot 31
15	73°44'23"	50.00'	64.35'	37.50'	60.00'	N44°21'10.5"E	Lot 30
16	60°00'00"	50.00'	58.36'	36.67'	50.00'	N22°31'01"W	Lot 29
17	73°44'23"	50.00'	64.35'	37.50'	60.00'	N44°21'10.5"E	Lot 28
18	85°20'24"	50.00'	42.28'	26.22'	46.44'	S26°04'24"W	Lot 27
19	41°24'35"	50.00'	36.14'	18.90'	35.36'	S19°06'23.5"W	Lot 27
20	01°25'01"	2502.88'	61.90'	30.95'	61.96'	N39°06'01.5"E	Lot 26
21	02°44'51"	2502.88'	120.01'	60.02'	120.01'	N37°01'20.5"E	Lot 25
22	00°27'26"	2502.88'	20.00'	10.00'	20.00'	N35°45'11"E	Lot 24
23	36°01'47"	25.00'	41.90'	27.78'	37.17'	S83°18'20.5"W	Lot 24
24	08°24'13"	501.05'	73.49'	36.81'	73.48'	N44°34'39.5"W	Lot 24
25	08°21'08"	503.61'	135.30'	67.96'	135.00'	N45°28'53"W	Lot 23
26	13°17'00"	503.61'	135.30'	67.96'	135.00'	N45°28'53"W	Lot 23
27	13°40'10"	503.61'	139.24'	69.95'	138.91'	N11°54'20"W	Lot 22
28	86°14'20"	25.00'	37.63'	23.47'	34.78'	N38°08'35"E	Lot 22
29	08°51'08"	647.22'	103.09'	51.65'	102.99'	N76°44'31"E	Lot 22
30	38°41'37"	50.00'	33.77'	17.56'	33.13'	S88°20'14.5"E	Lot 22
31	100°03'08"	50.00'	87.31'	59.64'	76.63'	N60°53'00"E	Lot 21
32	73°44'23"	50.00'	64.35'	37.50'	60.00'	N44°21'10.5"E	Lot 20
33	66°51'14"	50.00'	77.54'	49.01'	70.00'	S72°47'26"W	Lot 19
34	44°36'53"	50.00'	38.36'	20.53'	37.98'	S50°41'15.5"W	Lot 18
35	07°23'28"	617.28'	79.61'	39.86'	79.55'	S76°28'23"W	Lot 18
36	35°19'43"	25.00'	41.60'	27.44'	36.96'	N51°56'08.5"W	Lot 18
37	36°58'00"	50.00'	32.17'	16.67'	31.62'	N14°09'47"E	Lot 18
38	34°44'58"	50.00'	30.47'	15.74'	30.00'	N15°08'18.5"E	Lot 18
39	73°44'23"	50.00'	64.35'	37.50'	60.00'	N44°21'10.5"E	Lot 17
40	66°44'08"	50.00'	58.24'	38.93'	55.00'	S70°34'28"W	Lot 16
41	76°20'40"	50.00'	68.37'	40.74'	63.17'	S01°57'53"E	Lot 15
42	36°58'00"	50.00'	32.17'	16.67'	31.62'	S82°48'13"E	Lot 14
43	08°27'59"	643.61'	95.03'	47.63'	95.00'	S08°50'09.5"E	Lot 12
44	13°32'08"	643.61'	152.05'	76.30'	151.69'	S19°30'10"E	Lot 11
45	85°22'41"	25.00'	37.40'	23.20'	34.01'	S77°42'12.5"E	Lot 11
46	41°24'35"	50.00'	36.14'	18.90'	35.36'	S80°08'44.5"W	Lot 10
47	34°54'33"	50.00'	30.47'	15.74'	30.00'	S83°23'34.5"W	Lot 10
48	81°05'00"	50.00'	70.76'	48.77'	65.00'	S25°23'37"W	Lot 9
49	53°29'15"	50.00'	46.68'	25.20'	45.00'	S41°53'30.5"E	Lot 8
50	53°29'15"	50.00'	46.68'	25.20'	45.00'	N34°37'14.5"E	Lot 7
51	33°50'45"	50.00'	34.77'	18.12'	34.08'	N37°57'14.5"E	Lot 6
52	41°24'35"	50.00'	36.14'	18.90'	35.36'	N38°44'09.5"E	Lot 6
53	85°48'41"	25.00'	37.40'	23.20'	34.01'	S77°42'12.5"E	Lot 5
54	05°31'41"	643.61'	62.10'	31.07'	62.07'	S37°36'48.5"E	Lot 5
55	04°35'48"	561.05'	45.01'	22.52'	45.00'	S42°40'27"E	Lot 5
56	09°12'03"	561.05'	90.10'	45.15'	90.00'	S49°34'22.5"E	Lot 4
57	09°12'03"	561.05'	90.10'	45.15'	90.00'	S58°46'25.5"E	Lot 3
58	08°06'27"	561.05'	73.44'	39.79'	73.39'	S67°25'30.5"E	Lot 2
59	45°06'21"	25.00'	37.13'	22.95'	33.81'	S28°54'03.5"E	Lot 2
60	85°06'21"	25.00'	37.13'	22.95'	33.81'	N36°10'17.5"E	Lot 1
61	04°06'21"	261.05'	40.81'	20.71'	40.20'	S83°19'42.5"E	Lot 1



The fee in and easement for all purposes over all roads shown on this plat is hereby expressly reserved by MIDDLE PLANTATION COUNTRY CLUB, INC., and the recordation of this plat shall not be construed as the dedication of the fee in or easement over such roads to public use.



Approved: *Thomas McCaw Jr.*
PLAT OF
MIDDLE PLANTATION COUNTRY CLUB, INC.
 SECTION I BLOCK H
 POWHATAN DISTRICT, JAMES CITY COUNTY, VIRGINIA
 Scale: 1" = 100'
 Nov, 1973
 DEWARD M. MARTIN & ASSOCIATES, INC.
 ENGINEERS, PLANNERS & SURVEYORS
 P.O. BOX 344 WILLIAMSBURG, VA.