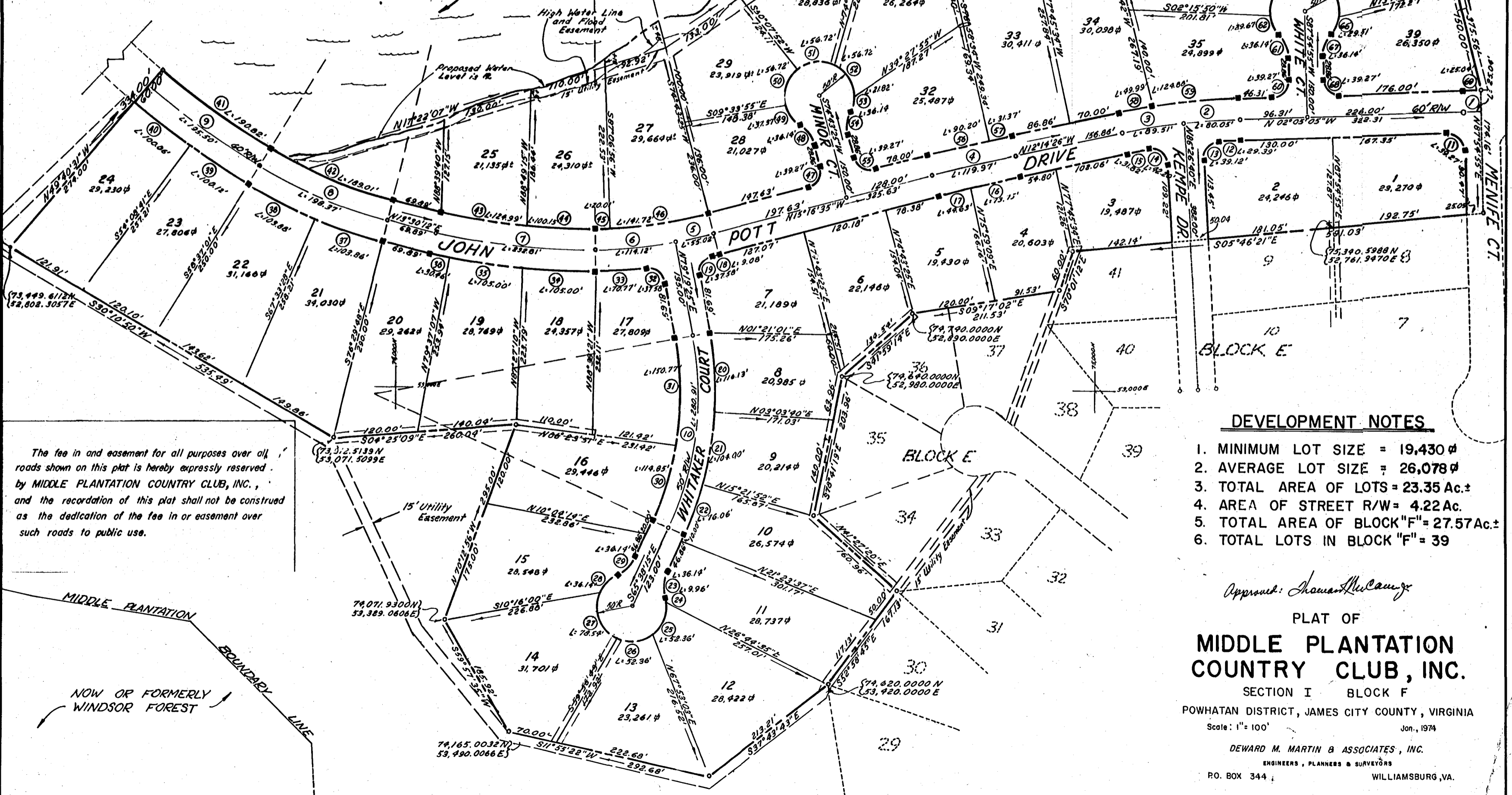


RECORDED 3-27-74
Juliette C. Clarke, Clerk

NO.	ANGLE	RADIUS	ARC	TAN	CHORD	CHORD BEAR	REMARKS	NO.	ANGLE	RADIUS	ARC	TAN	CHORD	CHORD BEAR	REMARKS	NO.	ANGLE	RADIUS	ARC	TAN	CHORD	CHORD BEAR	REMARKS
1	01°16'20"	1187.92'	25.04'	18.58'	25.04'	N08°43'15"W		39	06°23'30"	941.86'	105.00'	58.56'	104.95'	S02°03'41"W	Lot 18	52	65°00'00"	50.00'	56.78'	31.85'	59.75'	N58°49'00"E	Lot 31



The fee in and easement for all purposes over all roads shown on this plat is hereby expressly reserved by MIDDLE PLANTATION COUNTRY CLUB, INC., and the recordation of this plat shall not be construed as the dedication of the fee in or easement over such roads to public use.