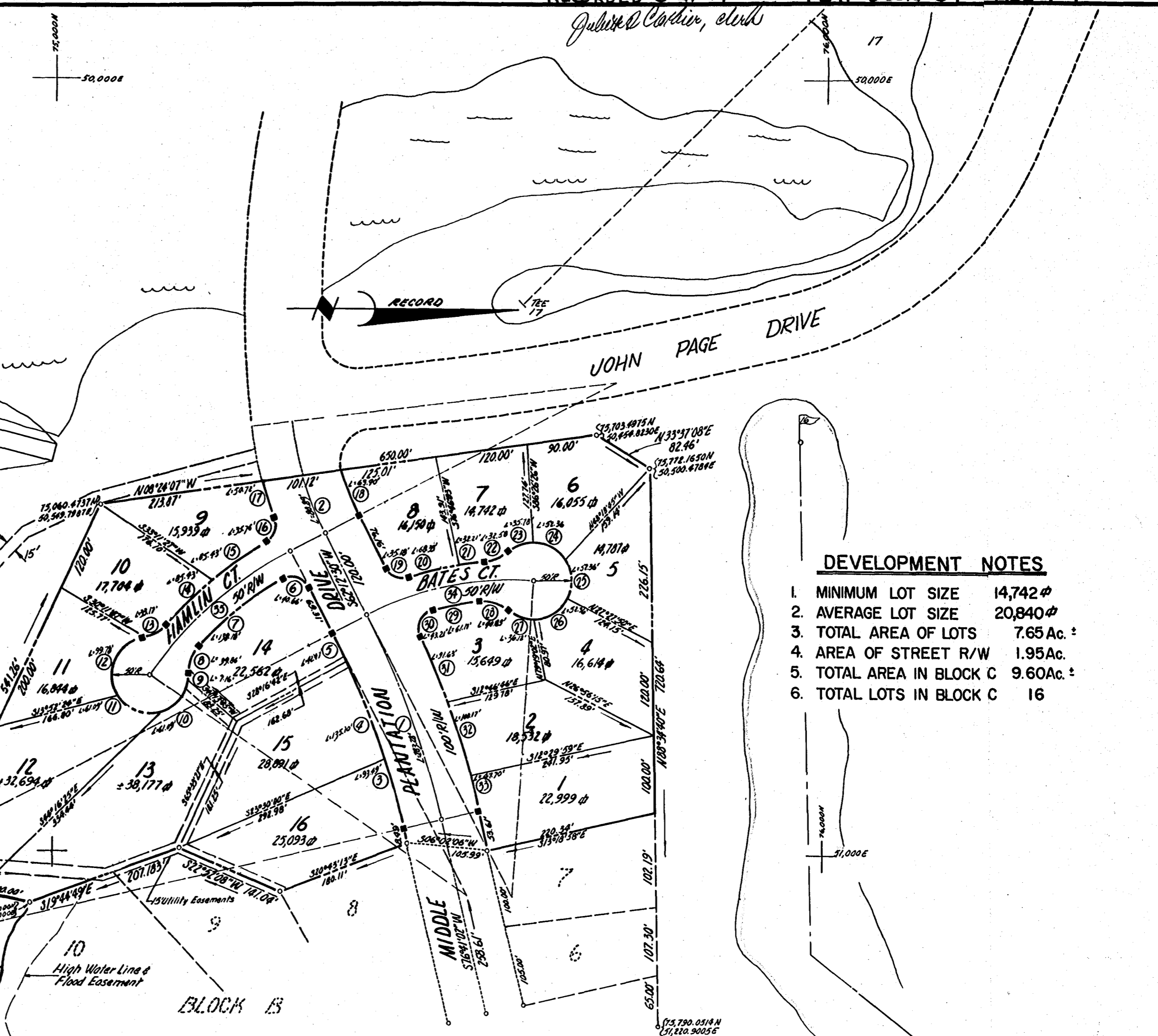


NO.	ANGLE	RADIUS	ARC	TAN	CHORD	CHORD BEARING	REMARKS
1	14°28'32"	1181.27'	283.28'	142.40'	282.53'	S69°26'46"W	B
2	10°56'24"	423.62'	80.89'	42.57'	80.76'	S67°40'42"W	B
3	05°00'00"	1071.27'	93.49'	46.77'	93.46'	S74°11'02"W	LOT 16
4	07°13'32"	1071.27'	135.10'	67.64'	135.01'	S68°04'16"W	LOT 15
5	08°15'00"	1071.27'	42.07'	21.04'	42.07'	S65°20'00"W	LOT 14
6	95°10'30"	25.00'	42.66'	26.43'	36.32'	S15°37'15"W	LOT 14
7	16°31'13"	476.35'	139.18'	69.59'	137.69'	S39°16'36"E	LOT 14
8	45°40'44"	50.00'	59.86'	21.06'	39.82'	S70°25'35"E	LOT 14
9	08°12'00"	50.00'	7.16'	3.58'	7.15'	S89°09'57"E	LOT 14
10	70°00'00"	50.00'	61.09'	33.01'	57.36'	S50°03'57"E	LOT 13
11	70°00'00"	50.00'	61.09'	33.01'	57.36'	S19°56'03"W	LOT 12
12	114°20'00"	50.00'	29.78'	77.49'	84.03'	N67°53'56"W	LOT 11
13	36°00'16"	50.00'	33.11'	17.22'	38.56'	N29°44'04"W	LOT 10
14	09°18'00"	526.35'	85.43'	42.81'	85.34'	N44°05'12"W	LOT 10
15	09°18'10"	526.35'	85.46'	42.82'	85.37'	N34°47'07"W	LOT 9
16	81°57'21"	25.00'	55.76'	21.72'	32.79'	N71°06'42"W	LOT 9
17	06°00'00"	473.62'	50.72'	25.38'	50.69'	S70°50'41"W	LOT 9
18	09°47'57"	373.62'	63.90'	32.03'	63.82'	N67°06'08"E	LOT 8
19	20°37'00"	25.00'	35.18'	21.21'	32.35'	N21°54'00"E	LOT 8
20	09°00'00"	435.00'	68.33'	34.24'	68.26'	N13°54'30"W	LOT 8
21	06°14'35"	435.00'	32.21'	16.11'	32.21'	N07°17'18"W	LOT 7
22	37°20'02"	50.00'	32.58'	16.89'	32.01'	N23°49'56"W	LOT 7
23	41°00'00"	50.00'	35.78'	18.69'	35.08'	N21°59'37"W	LOT 7
24	60°00'00"	50.00'	52.36'	28.87'	50.00'	N28°30'03"E	LOT 6
25	60°00'00"	50.00'	52.36'	28.87'	50.00'	N08°30'03"E	LOT 5
26	60°00'00"	50.00'	52.36'	28.87'	50.00'	S31°29'57"E	LOT 4
27	41°23'22"	50.00'	36.72'	18.89'	35.34'	S19°11'49"W	LOT 3
28	46°47'20"	50.00'	44.83'	21.63'	39.71'	S16°29'45"W	LOT 3
29	09°05'29"	385.00'	61.11'	30.62'	61.04'	S11°26'40"E	LOT 3
30	29°02'20"	25.00'	42.21'	29.29'	38.03'	S65°30'44"E	LOT 3
31	04°28'58"	1171.27'	91.63'	45.84'	91.60'	N67°12'34"E	LOT 3
32	04°54'00"	1171.27'	100.17'	50.11'	100.14'	N71°54'08"E	LOT 2
33	08°28'00"	1171.27'	42.70'	21.85'	42.70'	N75°31'02"E	LOT 1
34	31°00'00"	410.00'	222.79'	114.22'	220.05'	N12°13'30"W	B
35	28°00'00"	501.35'	243.00'	125.00'	242.57'	S41°47'30"E	B



- DEVELOPMENT NOTES**
1. MINIMUM LOT SIZE 14,742 ϕ
 2. AVERAGE LOT SIZE 20,840 ϕ
 3. TOTAL AREA OF LOTS 7.65 Ac. \pm
 4. AREA OF STREET R/W 1.95 Ac.
 5. TOTAL AREA IN BLOCK C 9.60 Ac. \pm
 6. TOTAL LOTS IN BLOCK C 16

The fee in and easement for all purposes over all roads shown on this plat is hereby expressly reserved by MIDDLE PLANTATION COUNTRY CLUB, INC., and the recordation of this plat shall not be construed as the dedication of the fee in or easement over such roads to public use.

Approved: *Thomas McCaughey*

PLAT OF
MIDDLE PLANTATION COUNTRY CLUB, INC.
 SECTION I BLOCK C
 POWHATAN DISTRICT, JAMES CITY COUNTY, VIRGINIA
 Scale: 1" = 100' JAN, 1974
 DEWARD M. MARTIN & ASSOCIATES, INC.
 ENGINEERS, PLANNERS & SURVEYORS
 P.O. BOX 344 WILLIAMSBURG, VA.