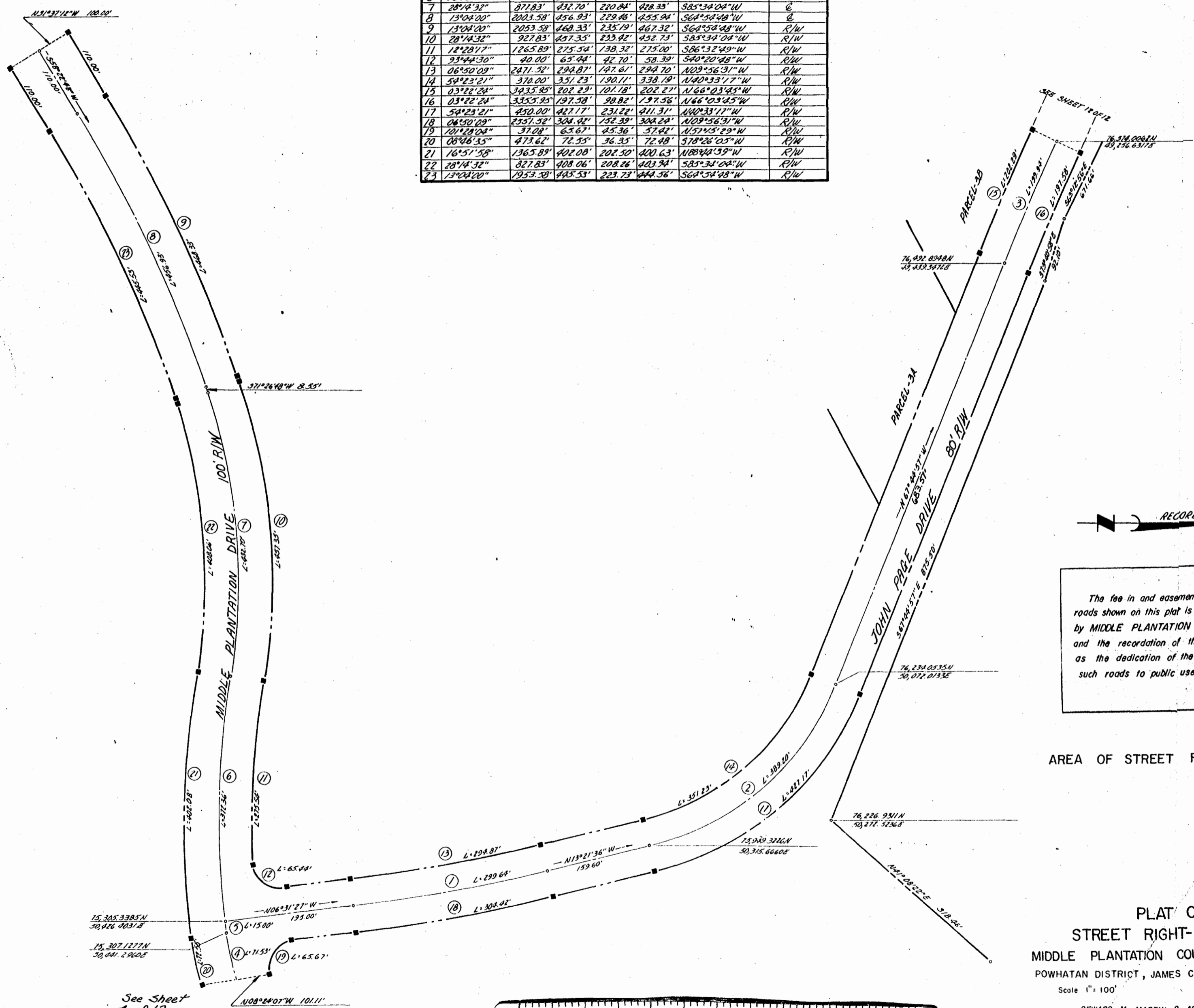


NO	ANGLE	RADIUS	ARC	TAN	CHORD	CHORD BEARING	REMARKS
1	06°50'09"	2511.52	299.64	150.00	299.47	N09°56'31"W	℄
2	54°23'21"	410.00	389.20	210.66	374.75	N40°33'17"W	℄
3	03°22'24"	3305.25	199.94	100.00	199.91	N66°03'45"W	℄
4	09°40'26"	423.62	71.53	35.85	71.44	S77°59'09"W	℄
5	00°39'11"	1315.89	1500	7.50	15.00	S83°08'58"W	℄
6	16°12'47"	1315.89	372.36	187.43	371.72	N88°25'04"W	℄
7	28°14'32"	877.83	432.70	220.84	428.33	S85°34'04"W	℄
8	13°04'00"	2003.58	456.93	229.48	455.94	S64°54'48"W	℄
9	13°04'00"	2003.58	469.33	235.19	467.32	S64°54'48"W	R/W
10	28°14'32"	927.83	457.35	233.42	452.73	S85°34'04"W	R/W
11	12°28'17"	1265.89	275.54	138.32	275.00	S86°32'49"W	R/W
12	93°44'30"	40.00	65.44	42.70	58.39	S40°20'48"W	R/W
13	06°50'09"	2471.52	294.87	147.61	294.70	N09°56'31"W	R/W
14	54°23'21"	370.00	351.23	190.11	338.19	N40°33'17"W	R/W
15	03°22'24"	3435.25	202.29	101.18	202.27	N66°03'45"W	R/W
16	03°22'24"	3355.95	197.58	98.82	197.56	N66°03'45"W	R/W
17	54°23'21"	450.00	427.17	231.22	411.31	N40°33'17"W	R/W
18	06°50'09"	2351.52	304.42	152.39	304.24	N09°56'31"W	R/W
19	101°28'04"	37.08	65.67	45.36	57.82	N57°45'29"W	R/W
20	08°46'35"	473.62	72.55	36.35	72.48	S78°26'05"W	R/W
21	16°51'58"	1365.89	402.08	202.50	400.63	N88°44'39"W	R/W
22	28°14'32"	827.83	408.06	208.26	403.94	S85°34'04"W	R/W
23	13°04'00"	1953.58	445.53	223.73	444.56	S64°54'48"W	R/W



The fee in and easement for all purposes over all roads shown on this plat is hereby expressly reserved by MIDDLE PLANTATION COUNTRY CLUB, INC., and the recordation of this plat shall not be construed as the dedication of the fee in or easement over such roads to public use.

AREA OF STREET R/W = 6.81 Ac. ±

PLAT OF  
STREET RIGHT-OF-WAYS  
MIDDLE PLANTATION COUNTRY CLUB, INC.  
POWhatan DISTRICT, JAMES CITY COUNTY, VIRGINIA

Scale 1" = 100' Jan. 1974

DEWARD M. MARTIN & ASSOCIATES, INC.  
ENGINEERS, PLANNERS & SURVEYORS

P.O. BOX 344

WILLIAMSBURG, VA.

SHEET 11 OF 12

See Sheet  
A of 12

