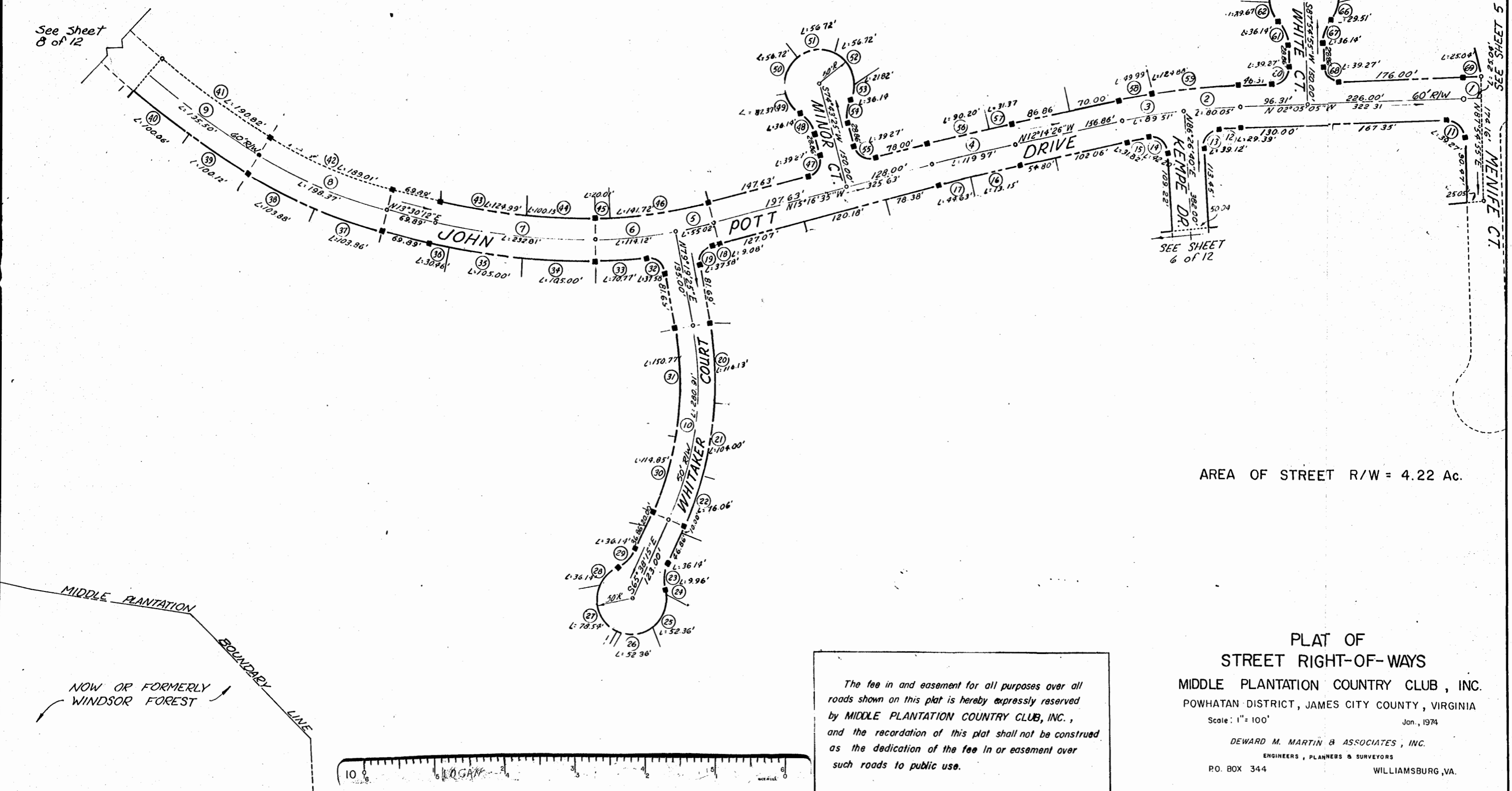
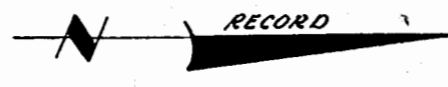


NO.	ANGLE	RADIUS	ARC	TAN	CHORD	CHORD BEAR	REMARKS	NO.	ANGLE	RADIUS	ARC	TAN	CHORD	CHORD BEAR	REMARKS	NO.	ANGLE	RADIUS	ARC	TAN	CHORD	CHORD BEAR	REMARKS
1	01°14'20"	1157.92'	25.04'	12.52'	25.08'	N08°42'15"W	4	39	06°23'30"	941.26'	105.00'	52.56'	104.95'	S02°03'41"W	Lot 18	52	65°00'00"	50.00'	56.72'	31.85'	53.73'	N58°38'00"E	Lot 31
2	04°47'40"	956.57'	80.05'	40.05'	80.02'	N09°28'55"W	4	35	06°23'30"	941.26'	105.00'	52.56'	104.95'	S08°27'11"W	Lot 19	53	25°00'00"	50.00'	21.82'	11.08'	21.64'	S76°22'00"E	Lot 32
3	05°21'41"	956.57'	89.51'	44.79'	89.48'	N09°33'36"W	4	36	01°51'16"	941.26'	30.46'	15.23'	30.46'	S12°34'39"W	Lot 20	54	41°24'35"	50.00'	36.14'	18.90'	35.36'	S84°34'18"E	Lot 32
4	03°02'09"	2269.25'	119.72'	60.00'	119.96'	N13°45'30"W	4	37	08°56'20"	665.69'	103.86'	52.03'	103.75'	S17°58'22"W	Lot 21	55	90°00'00"	25.00'	39.27'	25.00'	35.36'	N29°43'25"E	Lot 32
5	04°36'00"	685.25'	55.02'	27.52'	55.00'	N12°58'35"W	4	38	08°56'27"	665.69'	103.88'	52.05'	103.77'	S26°54'45"W	Lot 22	56	02°15'09"	2299.25'	90.20'	45.10'	90.19'	N14°09'00"W	Lot 32
6	09°32'31"	685.25'	114.12'	57.19'	113.99'	N05°54'20"W	4	39	04°28'20"	1282.69'	100.12'	50.09'	100.09'	S33°37'09"W	Lot 23	57	00°47'00"	2299.25'	31.57'	15.68'	31.37'	N12°37'56"W	Lot 33
7	14°38'16"	911.26'	232.81'	117.04'	232.17'	N06°11'04"E	4	40	04°28'10"	1282.69'	100.06'	50.05'	100.03'	S38°05'24"W	Lot 24	58	02°54'11"	986.57'	49.99'	25.00'	49.98'	N10°47'20"W	Lot 34
8	17°52'47"	635.69'	198.37'	100.00'	197.57'	N22°26'35"E	4	41	08°56'30"	1222.69'	190.82'	95.60'	190.62'	N35°51'14"E	R/W	59	07°15'10"	986.57'	124.88'	62.53'	124.80'	N05°42'40"W	Lot 35
9	08°56'30"	1252.69'	195.50'	87.95'	195.80'	N35°51'14"E	4	42	17°52'47"	605.69'	189.01'	95.28'	188.25'	N22°26'35"E	R/W	60	90°00'00"	25.00'	39.27'	25.00'	35.36'	N47°05'05"W	Lot 35
10	35°02'20"	459.34'	280.91'	145.00'	276.55'	S83°09'25"E	4	43	08°07'36"	881.26'	124.99'	62.60'	124.89'	N09°26'24"E	Lot 25	61	41°24'35"	50.00'	36.14'	18.90'	35.36'	S67°12'38"W	Lot 35
11	90°00'00"	25.00'	39.27'	25.00'	35.36'	S42°54'55"W	Lot 1	44	06°30'40"	881.26'	100.15'	50.13'	100.09'	N02°07'16"E	Lot 26	62	34°00'00"	50.00'	29.67'	15.29'	29.24'	S63°30'20"W	Lot 35
12	01°49'03"	926.57'	29.39'	14.70'	29.39'	S02°59'36"E	Lot 2	45	01°45'00"	655.25'	20.01'	10.01'	20.01'	N02°00'34"W	Lot 26	63	65°00'00"	50.00'	56.27'	31.85'	53.73'	N66°59'40"W	Lot 36
13	89°39'12"	25.00'	39.12'	24.85'	35.25'	S48°43'44"E	Lot 2	46	12°23'31"	655.25'	141.72'	71.14'	141.44'	N09°04'50"W	Lot 27	64	65°00'00"	50.00'	56.27'	31.85'	53.73'	N01°59'40"W	Lot 37
14	96°43'02"	25.00'	42.20'	28.12'	37.37'	S38°05'09"W	Lot 3	47	90°00'00"	25.00'	39.27'	25.00'	35.36'	N60°16'35"W	Lot 28	65	65°00'00"	50.00'	56.27'	31.85'	53.73'	N63°00'20"E	Lot 38
15	01°58'04"	926.57'	31.82'	15.91'	31.82'	S11°15'24"E	Lot 3	48	41°24'35"	50.00'	36.14'	18.90'	35.36'	S54°01'08"W	Lot 28	66	33°49'10"	50.00'	29.51'	15.20'	29.09'	S67°35'05"E	Lot 39
16	01°53'29"	2239.25'	73.75'	36.88'	73.75'	S13°11'10"E	Lot 4	49	42°49'10"	50.00'	37.97'	19.60'	36.50'	S54°43'25"W	Lot 28	67	41°24'35"	50.00'	36.14'	18.90'	35.36'	S71°22'48"E	Lot 39
17	01°08'40"	2239.25'	44.63'	22.31'	44.63'	S14°42'15"E	Lot 5	50	65°00'00"	50.00'	56.72'	31.85'	53.73'	N71°22'00"W	Lot 29	68	90°00'00"	25.00'	39.27'	25.00'	35.36'	N42°54'55"E	Lot 39
18	00°43'37"	715.25'	9.08'	4.54'	9.08'	S14°54'46"E	Lot 7	51	65°00'00"	50.00'	56.72'	31.85'	53.73'	N06°22'00"W	Lot 30	69	01°16'19"	1127.92'	25.04'	12.52'	25.04'	N02°43'15"W	Lot 39
19	86°07'37"	25.00'	37.58'	23.36'	34.14'	S57°36'46"E	Lot 7																
20	13°44'15"	484.34'	116.13'	58.34'	115.85'	N86°11'32"E	Lot 8																
21	12°18'12"	484.34'	104.00'	52.20'	103.80'	S80°47'14"E	Lot 9																
22	08°59'53"	484.34'	76.06'	38.11'	75.99'	S70°08'12"E	Lot 10																
23	41°24'35"	50.00'	36.14'	18.90'	35.36'	S86°20'32"E	Lot 11																
24	11°24'35"	50.00'	9.96'	4.98'	9.94'	N78°39'28"E	Lot 11																
25	60°00'00"	50.00'	52.36'	28.87'	50.00'	S65°38'15"E	Lot 12																
26	60°00'00"	50.00'	52.36'	28.87'	50.00'	S05°38'15"E	Lot 13																
27	90°00'00"	50.00'	78.54'	50.00'	70.71'	S69°21'45"W	Lot 14																
28	41°24'35"	50.00'	36.14'	18.90'	35.36'	N44°55'58"W	Lot 15																
29	41°24'35"	50.00'	36.14'	18.90'	35.36'	N44°55'58"W	Lot 15																
30	15°09'00"	434.34'	114.85'	57.76'	114.51'	N73°12'45"W	Lot 16																
31	19°53'20"	434.34'	150.77'	76.15'	150.01'	S89°16'05"W	Lot 17																
32	86°07'37"	25.00'	37.58'	23.36'	34.14'	S36°15'36"W	Lot 17																
33	05°40'08"	715.25'	70.77'	35.41'	70.74'	S03°38'08"E	Lot 17																



AREA OF STREET R/W = 4.22 Ac.

The fee in and easement for all purposes over all roads shown on this plat is hereby expressly reserved by MIDDLE PLANTATION COUNTRY CLUB, INC., and the recordation of this plat shall not be construed as the dedication of the fee in or easement over such roads to public use.

PLAT OF
STREET RIGHT-OF-WAYS
MIDDLE PLANTATION COUNTRY CLUB, INC.
POWHATAN DISTRICT, JAMES CITY COUNTY, VIRGINIA
Scale: 1" = 100'
Jan., 1974
DEWARD M. MARTIN & ASSOCIATES, INC.
ENGINEERS, PLANNERS & SURVEYORS
P.O. BOX 344
WILLIAMSBURG, VA.