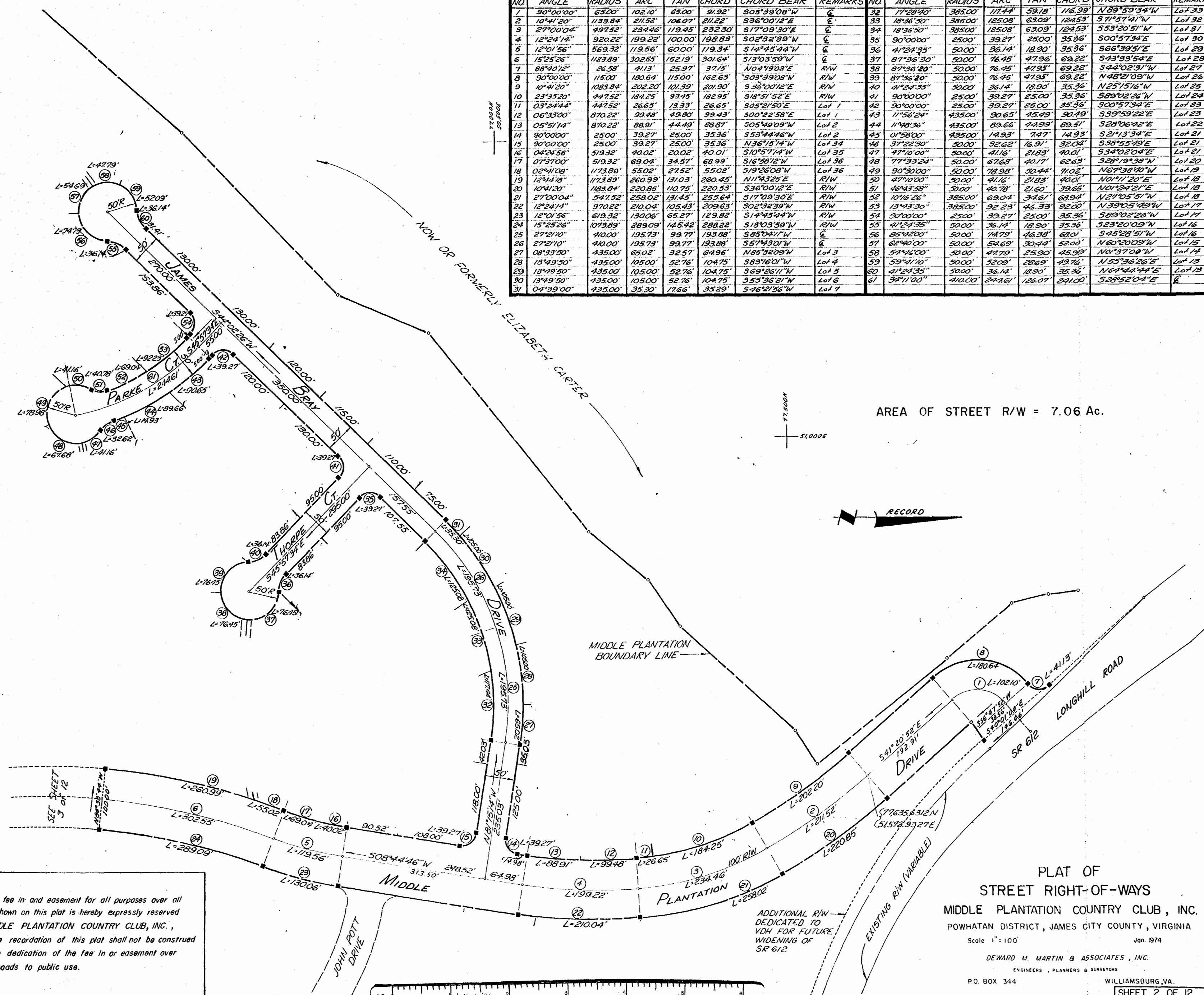


NO.	ANGLE	RADIUS	ARC	TAN	CHORD	CHORD BEAR	REMARKS	NO.	ANGLE	RADIUS	ARC	TAN	CHORD	CHORD BEAR	REMARKS
1	90°00'00"	65.00'	102.10'	63.00'	91.92'	S03°39'08"W	℄	32	77°23'40"	385.00'	117.44'	59.18'	116.99'	N89°59'34"W	Lot 33
2	10°41'20"	1133.84'	211.52'	106.07'	211.22'	S36°00'12"E	℄	33	18°36'50"	385.00'	125.08'	63.09'	124.53'	S71°57'41"W	Lot 32
3	27°00'04"	497.52'	234.46'	119.45'	232.30'	S17°09'30"E	℄	34	18°36'50"	385.00'	125.08'	63.09'	124.53'	S53°20'51"W	Lot 31
4	12°24'14"	920.22'	199.22'	100.00'	198.83'	S02°32'39"W	℄	35	90°00'00"	25.00'	39.27'	25.00'	35.36'	S00°57'34"E	Lot 30
5	12°01'56"	569.32'	119.56'	60.00'	119.34'	S14°45'44"W	℄	36	41°24'35"	50.00'	36.14'	18.90'	35.36'	S66°39'51"E	Lot 29
6	15°25'26"	1123.89'	302.55'	152.19'	301.64'	S13°03'59"W	℄	37	87°36'30"	50.00'	76.45'	47.96'	69.22'	S43°33'54"E	Lot 28
7	88°40'12"	26.58'	4.13'	25.97'	37.15'	N04°19'02"E	R/W	38	87°36'20"	50.00'	76.45'	47.95'	69.22'	S44°02'31"W	Lot 27
8	90°00'00"	115.00'	180.64'	115.00'	162.63'	S03°39'08"W	R/W	39	87°36'20"	50.00'	76.45'	47.95'	69.22'	N48°21'09"W	Lot 26
9	10°41'20"	1083.84'	202.20'	101.39'	201.90'	S36°00'12"E	R/W	40	41°24'35"	50.00'	36.14'	18.90'	35.36'	N25°15'16"W	Lot 25
10	23°35'20"	447.52'	184.25'	93.45'	182.95'	S18°51'52"E	R/W	41	90°00'00"	25.00'	39.27'	25.00'	35.36'	S89°02'36"W	Lot 24
11	03°24'44"	447.52'	26.65'	13.33'	26.65'	S05°21'50"E	Lot 1	42	90°00'00"	25.00'	39.27'	25.00'	35.36'	S00°57'34"E	Lot 23
12	06°33'00"	870.22'	99.48'	49.80'	99.43'	S00°22'58"E	Lot 1	43	11°56'24"	435.00'	90.65'	45.49'	90.49'	S39°59'22"E	Lot 23
13	05°51'14"	870.22'	88.91'	44.49'	88.87'	S05°49'09"W	Lot 2	44	11°48'36"	435.00'	89.66'	44.99'	89.51'	S28°06'42"E	Lot 22
14	90°00'00"	25.00'	39.27'	25.00'	35.36'	S53°44'46"W	Lot 2	45	01°58'00"	435.00'	14.93'	7.47'	14.93'	S21°13'34"E	Lot 21
15	90°00'00"	25.00'	39.27'	25.00'	35.36'	N36°15'14"W	Lot 34	46	37°22'30"	50.00'	32.62'	16.91'	32.04'	S38°55'49"E	Lot 21
16	04°24'56"	519.32'	40.02'	20.02'	40.01'	S10°57'14"W	Lot 35	47	47°10'00"	50.00'	41.16'	21.83'	40.01'	S34°02'04"E	Lot 21
17	07°37'00"	519.32'	69.04'	34.57'	68.99'	S16°58'12"W	Lot 36	48	77°33'24"	50.00'	67.68'	40.17'	62.63'	S28°19'38"W	Lot 20
18	02°41'08"	1173.89'	55.02'	27.52'	55.02'	S19°26'08"W	Lot 36	49	90°00'00"	50.00'	78.98'	50.44'	71.02'	N67°38'40"W	Lot 19
19	12°41'18"	1173.89'	260.99'	131.03'	260.45'	N11°43'25"E	R/W	50	47°10'00"	50.00'	41.16'	21.83'	40.01'	N01°11'20"E	Lot 18
20	10°41'20"	1183.84'	220.85'	110.75'	220.53'	S36°00'12"E	R/W	51	46°43'58"	50.00'	40.78'	21.60'	39.66'	N01°24'21"E	Lot 18
21	27°00'04"	547.52'	258.02'	131.45'	255.64'	S17°09'30"E	R/W	52	10°16'26"	385.00'	69.04'	34.61'	68.94'	N27°05'51"W	Lot 18
22	12°24'14"	970.22'	210.04'	105.43'	209.63'	S02°32'39"W	R/W	53	13°43'30"	385.00'	92.23'	46.33'	92.00'	N39°05'49"W	Lot 17
23	12°01'56"	619.32'	130.06'	65.27'	129.82'	S14°45'44"W	R/W	54	90°00'00"	25.00'	39.27'	25.00'	35.36'	S89°02'36"W	Lot 17
24	15°25'26"	1079.89'	289.09'	145.42'	288.22'	S13°03'59"W	R/W	55	41°24'35"	50.00'	36.14'	18.90'	35.36'	S23°20'09"W	Lot 16
25	27°21'10"	40.00'	195.73'	99.77'	193.88'	S85°04'11"W	℄	56	85°42'00"	50.00'	74.79'	46.38'	69.01'	S45°28'51"W	Lot 16
26	27°21'10"	40.00'	195.73'	99.77'	193.88'	S57°43'01"W	℄	57	62°40'00"	50.00'	54.69'	30.44'	52.00'	N60°20'09"W	Lot 15
27	08°33'50"	435.00'	65.02'	32.51'	64.96'	N85°32'09"W	Lot 3	58	54°46'00"	50.00'	47.79'	25.90'	45.99'	N01°37'09"W	Lot 14
28	19°49'50"	435.00'	105.00'	52.76'	104.75'	S83°16'01"W	Lot 4	59	59°41'10"	50.00'	52.09'	28.69'	49.76'	N55°36'26"E	Lot 13
29	13°49'50"	435.00'	105.00'	52.76'	104.75'	S69°26'11"W	Lot 5	60	41°24'35"	50.00'	36.14'	18.90'	35.36'	N64°44'44"E	Lot 13
30	13°49'50"	435.00'	105.00'	52.76'	104.75'	S55°36'21"W	Lot 6	61	34°11'00"	410.00'	244.61'	126.07'	241.00'	S28°52'04"E	℄
31	04°39'00"	435.00'	35.30'	17.66'	35.29'	S46°21'56"W	Lot 7								



The fee in and easement for all purposes over all roads shown on this plat is hereby expressly reserved by MIDDLE PLANTATION COUNTRY CLUB, INC., and the recordation of this plat shall not be construed as the dedication of the fee in or easement over such roads to public use.

PLAT OF
 STREET RIGHT-OF-WAYS
 MIDDLE PLANTATION COUNTRY CLUB, INC.
 POWHATAN DISTRICT, JAMES CITY COUNTY, VIRGINIA
 Scale 1" = 100'
 Jan. 1974
 DEWARD M. MARTIN & ASSOCIATES, INC.
 ENGINEERS, PLANNERS & SURVEYORS
 P.O. BOX 344
 WILLIAMSBURG, VA.
 SHEET 2 OF 12