

THE LINE MARKED "A" TO "B" AS SHOWN ON PLAT BY W.D. THOMAS, C.L.S. DATED OCTOBER, 1957 IS ACCEPTED AS CORRECT BY THE UNDERSIGNED.

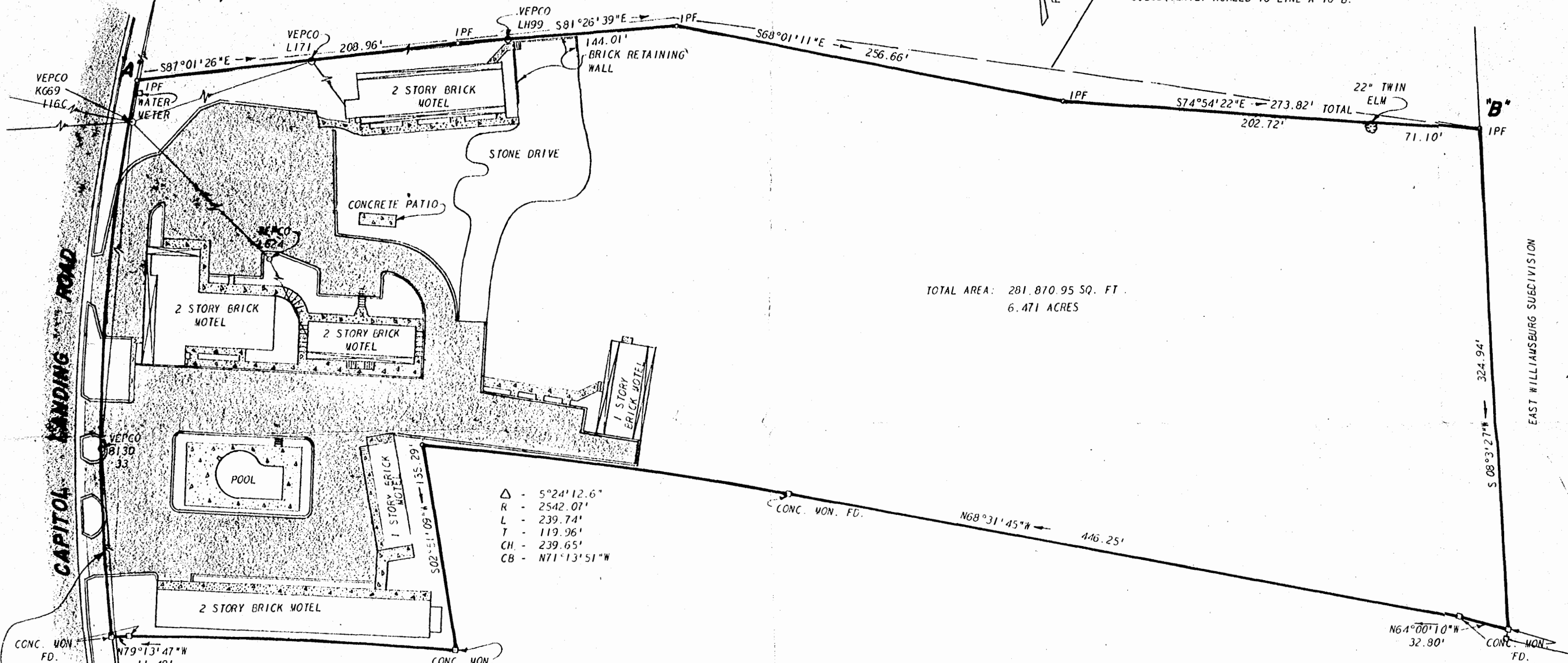
Recorded 2/21/74  
DB 51 Page 769

*E. F. Lindsay*  
E. F. LINDSAY

JERRY JUMP, PRESIDENT JUMP ENTERPRISES, INC.

NOW OR FORMERLY  
E.F. LINDSAY

LINE AS SHOWN ON PLAT BY W. B. GALLUP  
DATED DECEMBER 15, 1961. PARTIES  
SUBSEQUENTLY AGREED TO LINE A TO B.



TOTAL AREA: 281,870.95 SQ. FT.  
6.471 ACRES

$\Delta$  -  $5^{\circ}24'12.6''$   
 R - 2542.07'  
 L - 239.74'  
 T - 119.96'  
 CH - 239.65'  
 CB -  $N71^{\circ}13'51''W$

$\Delta$  -  $5^{\circ}40'20''$   
 R - 2143.61'  
 L - 212.22'  
 T - 106.19'  
 CH - 212.13'  
 CB -  $N76^{\circ}23'37''W$

$\Delta$  -  $18^{\circ}6'4.1''$   
 R - 1145.95'  
 L - 262.03'  
 T - 182.54'  
 CH - 360.53'  
 CB -  $N14^{\circ}7'11''E$

NOW OR FORMERLY  
U. S. GOVERNMENT



L. V. WOODSON & ASSOCIATES INC.  
ENGINEERS, SURVEYORS & PLANNERS  
P. O. BOX 633 WILLIAMSBURG, VIRGINIA 23185

**A SURVEY OF 6.471 ACRES & IMPROVEMENTS  
STANDING IN THE NAME OF  
JUMP ENTERPRISES INC.**

LYING IN THE CITY OF WILLIAMSBURG, VIRGINIA

SCALE: 1" = 50' DWG. 1665  
DATE: FEBRUARY 7, 1974