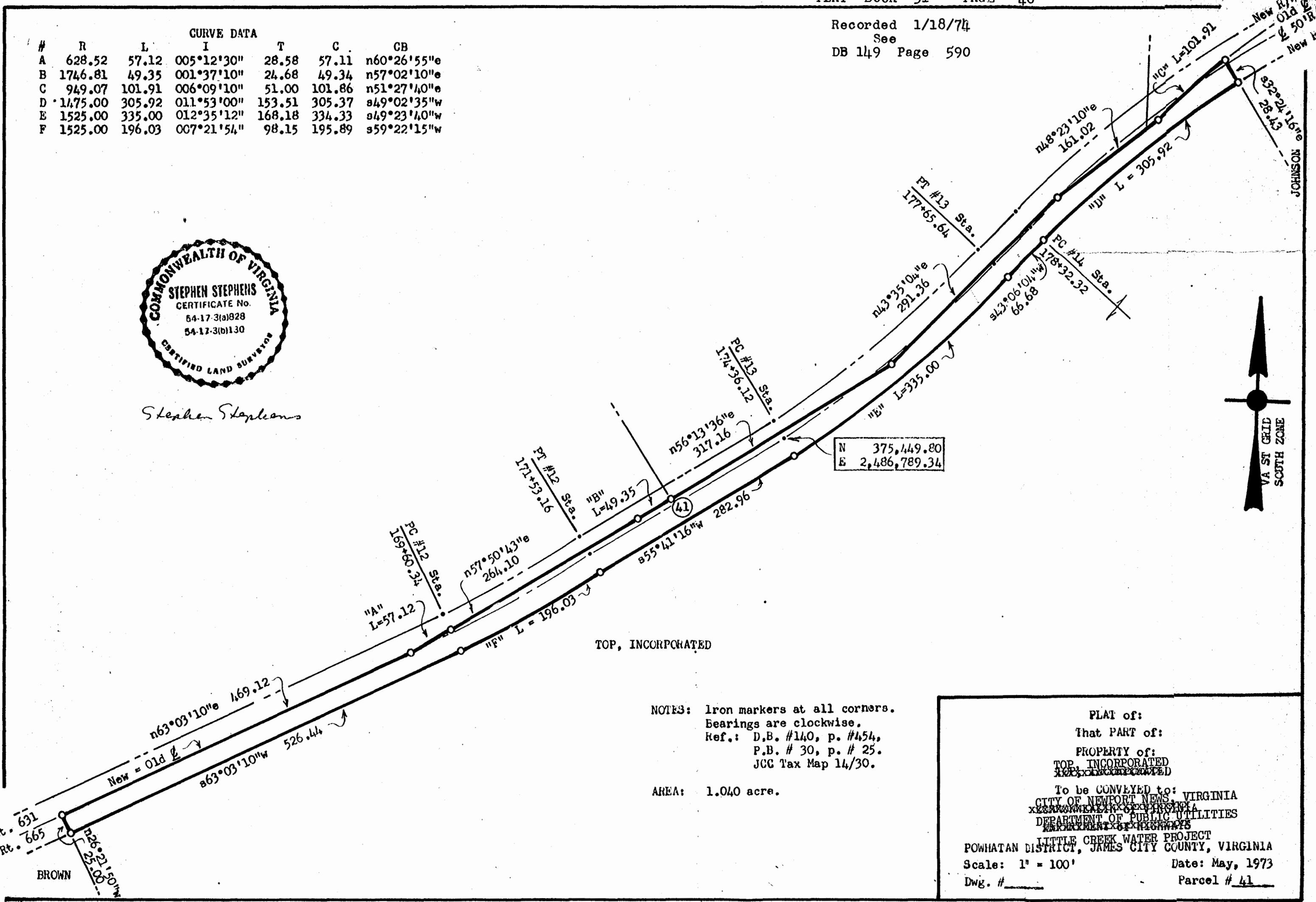


Recorded 1/18/74
 See
 DB 149 Page 590

#	R	L	I	T	C	CB
A	628.52	57.12	005°12'30"	28.58	57.11	n60°26'55"e
B	1746.81	49.35	001°37'10"	24.68	49.34	n57°02'10"e
C	949.07	101.91	006°09'10"	51.00	101.86	n51°27'40"e
D	1475.00	305.92	011°53'00"	153.51	305.37	s49°02'35"w
E	1525.00	335.00	012°35'12"	168.18	334.33	s49°23'40"w
F	1525.00	196.03	007°21'54"	98.15	195.89	s59°22'15"w



Stephen Stephens



NOTES: Iron markers at all corners.
 Bearings are clockwise.
 Ref.: D.B. #140, p. #454,
 P.B. # 30, p. # 25.
 JCC Tax Map 14/30.

AREA: 1.040 acre.

PLAT of:
 That PART of:
 PROPERTY of:
 TOP, INCORPORATED
 To be CONVEYED to:
 CITY OF NEWPORT NEWS, VIRGINIA
 DEPARTMENT OF PUBLIC UTILITIES
 LITTLE CREEK WATER PROJECT
 POWHATAN DISTRICT, JAMES CITY COUNTY, VIRGINIA
 Scale: 1" = 100'
 Date: May, 1973
 Dwg. # _____ Parcel # 41