

ENGINEER & SURVEYOR'S CERTIFICATE

I hereby certify that to the best of my knowledge and belief, all of the requirements of the Board of Supervisors and ordinances of the county of James City, Virginia, regarding the platting of subdivisions within the county have been complied with.

Given under our hands this 22 day of Feb 1973



STATE of VIRGINIA, COUNTY of JAMES CITY

I, Ruth C. Martin, a Notary Public
 do certify that the persons whose names are signed to the foregoing writing have acknowledged the same before me in my city and state aforesaid.
 Given under my hand this 30 day of July, 1973
 My commission expires 8/5/74

STATE of VIRGINIA, COUNTY of JAMES CITY

In the clerk's office of the circuit court for the county of James City the 7 day of DEC. 1973
 The map shown hereon was presented and admitted to the record as the law directs
 Teste: Juchette C. Cloutier, Clerk
 Plat Book 31 Page 34

CERTIFICATE of APPROVAL

This subdivision known as St. George's Hundred is approved by the undersigned in accordance with existing subdivision regulations and may be committed to record.
 Date 3/4/73 R.D. Meade Highway Engineer
 Date 3/16/73 W. W. Williams Health Officer
 Date 12/5/73 John W. Williams Agent of Governing Body

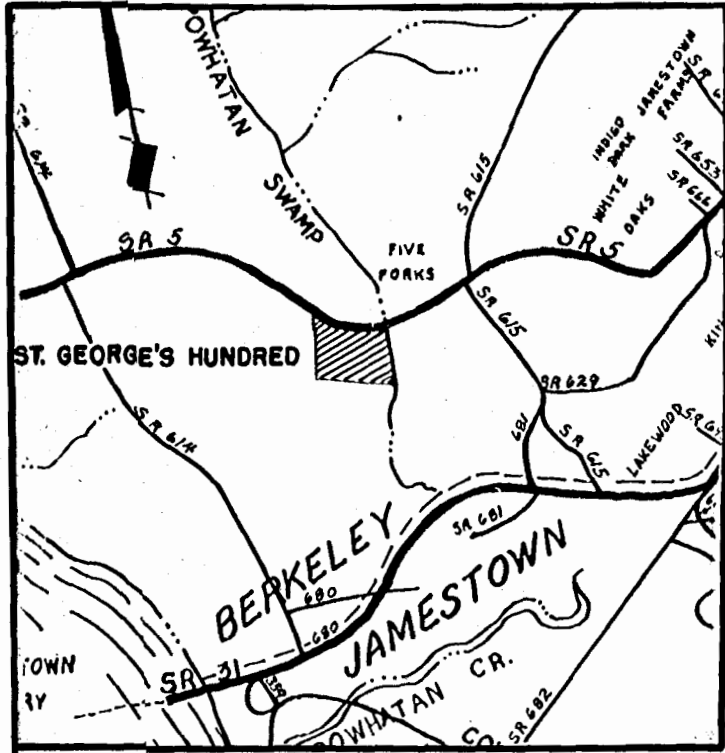
This subdivision is with free consent and in accordance with the wishes and desires of the undersigned owners and proprietors.

Title to the land shown hereon is vested in St. George Corporation, a Virginia Corporation by deed dated March 14, 1913 recorded in deed book 144 page 533 in the circuit court of James City County, Virginia
 BY Edward M. Martin Pres. BY Edward M. Martin Secy.

DEWARD M. MARTIN & ASSOCIATES, INC.
 ENGINEERS, PLANNERS & SURVEYORS
 P.O. BOX 523, TOANO, VIRGINIA 23180

RECORD PLAT
SAINT GEORGE'S HUNDRED
 SECTION I
 BERKELEY MAGISTERIAL DISTRICT

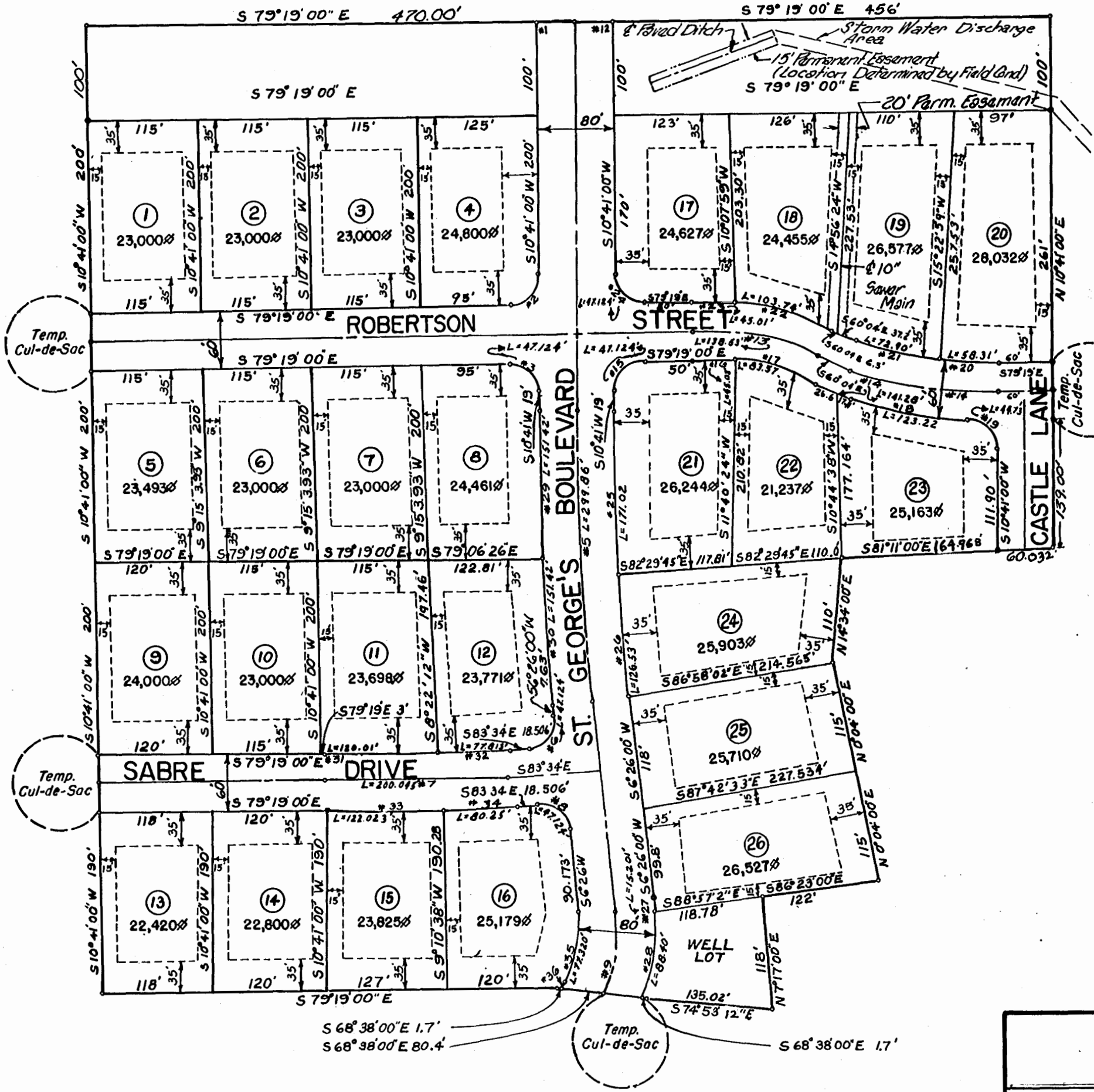
JAMES CITY COUNTY		VIRGINIA	
DES. RSP	JOB NO. 7214-13	DRWN. SBW	DATE: NOV. 1972
APP. DMM	SCALE: 1" = 100'	SHEET NO. 1	OF 10 SHEETS



LOCATION MAP
 SCALE: 1" = 1 Mile

DEVELOPMENT NOTES

1. Minimum Lot Size = 21,237 $\frac{1}{2}$
2. Average Lot Size = 24,266 $\frac{1}{2}$
3. Total Area of Lots = 14.48 Acres
4. Total Area of Street $R_{1/4}$ = 6.49 Acres
5. Total Area of Section I = 20.97 Acres
6. Total Lots in Section I = 26



CURVE DATA

No	Angle	Radius	Arc	Tangent	Chord	Chord Bearing
1	90°00'00"	30.0	47.124	30.0	42.43	S 34°19'00" E
2	90°00'00"	30.0	47.124	30.0	42.43	S 34°19'00" E
3	90°00'00"	30.0	47.124	30.0	42.43	S 34°19'00" E
4	90°00'00"	30.0	47.124	30.0	42.43	S 34°19'00" E
5	90°00'00"	30.0	47.124	30.0	42.43	S 34°19'00" E
6	90°00'00"	30.0	47.124	30.0	42.43	S 34°19'00" E
7	90°00'00"	30.0	47.124	30.0	42.43	S 34°19'00" E
8	90°00'00"	30.0	47.124	30.0	42.43	S 34°19'00" E
9	90°00'00"	30.0	47.124	30.0	42.43	S 34°19'00" E
10	90°00'00"	30.0	47.124	30.0	42.43	S 34°19'00" E
11	90°00'00"	30.0	47.124	30.0	42.43	S 34°19'00" E
12	90°00'00"	30.0	47.124	30.0	42.43	S 34°19'00" E
13	90°00'00"	30.0	47.124	30.0	42.43	S 34°19'00" E
14	90°00'00"	30.0	47.124	30.0	42.43	S 34°19'00" E
15	90°00'00"	30.0	47.124	30.0	42.43	S 34°19'00" E
16	90°00'00"	30.0	47.124	30.0	42.43	S 34°19'00" E
17	90°00'00"	30.0	47.124	30.0	42.43	S 34°19'00" E
18	90°00'00"	30.0	47.124	30.0	42.43	S 34°19'00" E
19	90°00'00"	30.0	47.124	30.0	42.43	S 34°19'00" E
20	90°00'00"	30.0	47.124	30.0	42.43	S 34°19'00" E
21	90°00'00"	30.0	47.124	30.0	42.43	S 34°19'00" E
22	90°00'00"	30.0	47.124	30.0	42.43	S 34°19'00" E
23	90°00'00"	30.0	47.124	30.0	42.43	S 34°19'00" E
24	90°00'00"	30.0	47.124	30.0	42.43	S 34°19'00" E
25	90°00'00"	30.0	47.124	30.0	42.43	S 34°19'00" E
26	90°00'00"	30.0	47.124	30.0	42.43	S 34°19'00" E

