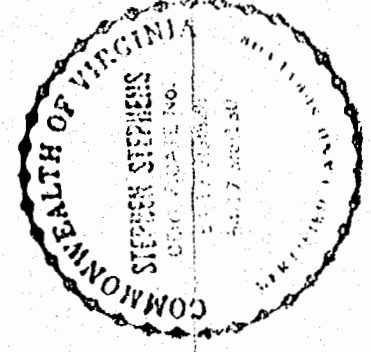
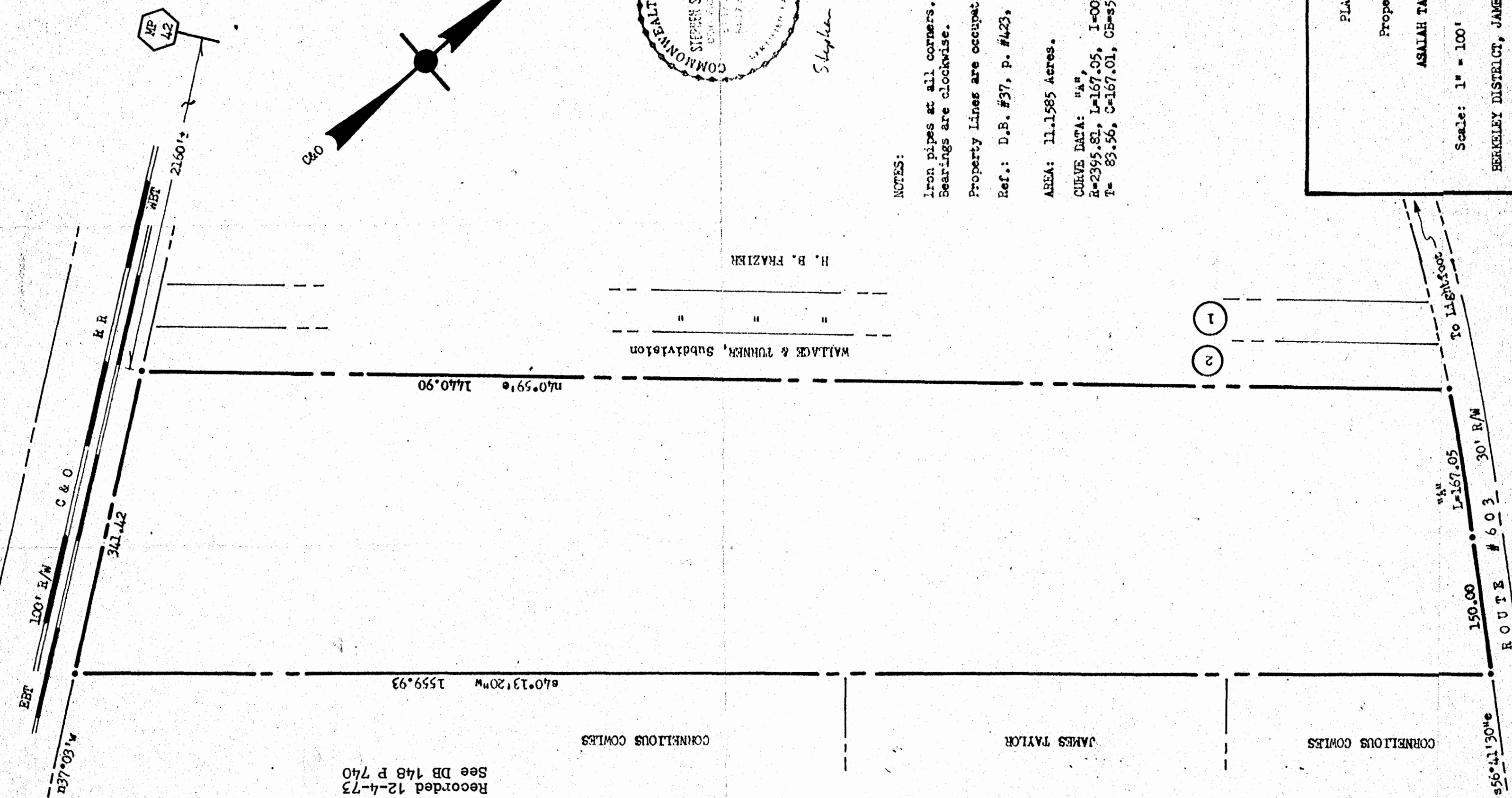


Recorded 12-4-73
See DB 148 P 740

CORNELIOUS COWLES

JAMES TAYLOR

CORNELIOUS COWLES



Stephen Stephens

NOTES:

Iron pipes at all corners.
Bearings are clockwise.

Property Lines are occupational.

Ref.: D.B. #37, p. #423.

AREA: 11.1585 Acres.

CURVE DATA: "A"
R=2395.81, L=167.05, I=003°59'40"
T= 83.56, C=167.01, CB=S58°41'30"E.

PLAT of:

Property of:

ASALAH TAYLOR, Estate

Scale: 1" = 100'

Aug. 1972

BERKELEY DISTRICT, JAMES CITY COUNTY, VIRGINIA