

I certify that this plat and subdivision was made by me at the direction of the Owner, and that the subdivision is entirely within the boundaries of land covered by deeds duly of record in the Clerk's Office of the Circuit Court of James City County in Deed Book 125, P. 101 and Deed Book 126, P. 183. This subdivision as it appears on this plat conforms to the applicable regulations relating to the subdivision of land.

LANGLEY, McDONALD AND OVERMAN

By *George E. Langley*



Table with columns: LOT NO., Δ OR BRG., DIST. OR RAD., ARC, LONG CHORD, CHORD BRG., NO., Δ OR BRG., DIST. OR RAD., ARC, LONG CHORD, CHORD BRG. (Lots 1-48)

Table with columns: LOT NO., Δ OR BRG., DIST. OR RAD., ARC, LONG CHORD, CHORD BRG., NO., Δ OR BRG., DIST. OR RAD., ARC, LONG CHORD, CHORD BRG. (Lots 41-48)

Table with columns: R.P. NO., Δ OR BRG., DIST. OR RAD., ARC, LONG CHORD, CHORD BRG. (Reserved Parcels 9-1 to 9-5)

Table with columns: EASEMENTS, NO., Δ OR BRG., DIST. OR RAD., ARC, LONG CHORD, CHORD BRG. (Easements 1-31)

STATE OF VIRGINIA, City of Newport News. I, James T. Dwyer, Jr., a Notary Public in and for the City and State aforesaid, do hereby certify that...

Given unto my hands this 1 day of OCT 1973. Notary Public *James T. Dwyer, Jr.*

This Subdivision of Property of Busch Properties, Incorporated, James City County, Virginia, as the same appears on this plat is with the free consent and in accordance with the desires of the undersigned Owner.

BUSCH PROPERTIES, INCORPORATED. Walter E. Busch, President. ATTORNEY: LANDSCAPE PROTECTION ZONE (LPZ)

In areas designated 'Landscape Protection Zone (LPZ)' no trees may be cut without prior approval of the Environmental Protection Board (EPB)...

- NOTES: 1. Whittaker's Mill Road and Parcels 9-1, 9-2, 9-3, 9-4, 9-5 & A-1 are part of common areas... 2. A 7-1/2 foot drainage easement is hereby reserved by Busch Properties, Inc. on each side of each lot line.

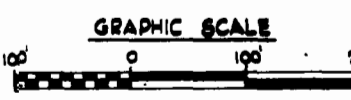
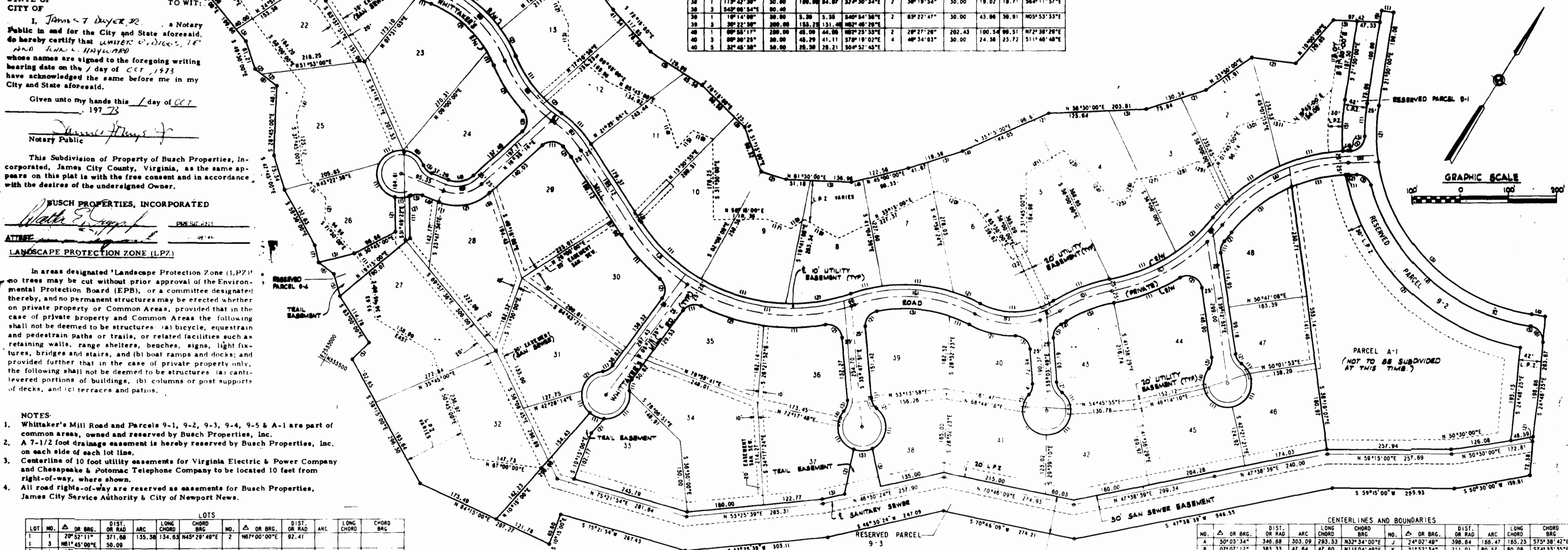
Table with columns: LOT NO., Δ OR BRG., DIST. OR RAD., ARC, LONG CHORD, CHORD BRG., NO., Δ OR BRG., DIST. OR RAD., ARC, LONG CHORD, CHORD BRG. (Lots 1-5)

WHITTAKER'S MILL SUBDIVISION OF PROPERTY OF BUSCH PROPERTIES, INC. JAMES CITY COUNTY, VIRGINIA. LANGLEY, McDONALD & OVERMAN CONSULTING ENGINEERS VA BEACH, VA. SEPT. 18, 1973

STATE OF VIRGINIA, COUNTY OF JAMES CITY. I, *Judith C. Overman*, Clerk of the Circuit Court of James City County, Virginia, do hereby certify that this plat and subdivision was duly recorded in the Clerk's Office of the Circuit Court of James City County, Virginia, on the 22nd day of October, 1973.

CERTIFICATE OF ADOPTION. This plat and subdivision was adopted by the Board of Supervisors of James City County, Virginia, on the 22nd day of October, 1973.

Table with columns: NO., Δ OR BRG., DIST. OR RAD., ARC, LONG CHORD, CHORD BRG., NO., Δ OR BRG., DIST. OR RAD., ARC, LONG CHORD, CHORD BRG. (Centerlines and Boundaries A-G)



PARCEL A-1 (NOT TO BE SUBDIVIDED AT THIS TIME)