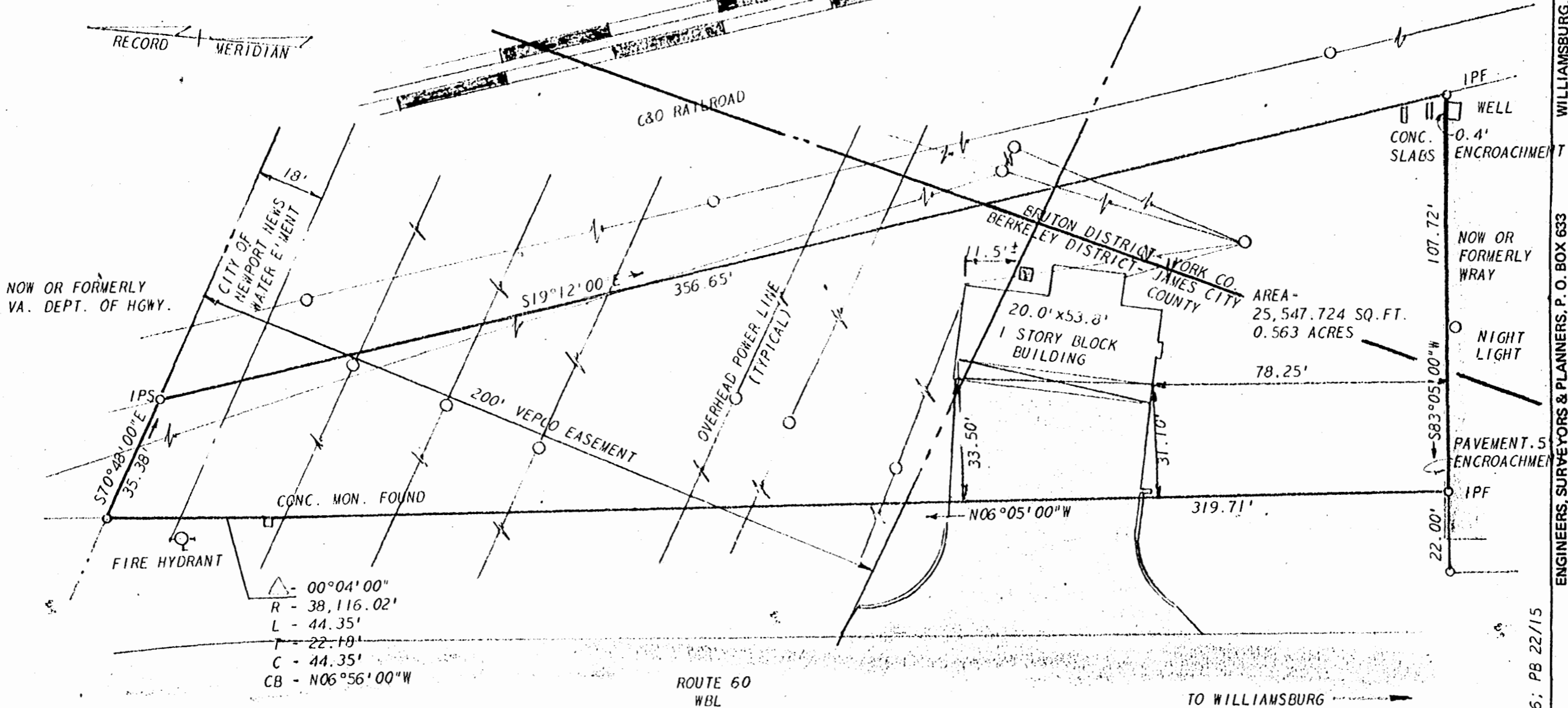


Recorded 7/19/73
See DB 146 Page 155

ok
GWW



WILLIAMSBURG, VIRGINIA 23185
 ENGINEERS, SURVEYORS & PLANNERS, P. O. BOX 633
 L. V. WOODSON & ASSOCIATES, INC.
 REF: DB 207/652; DB 114/326; PB 22/15
 LEGEND: ° = IP = IRON PIN, □ = MON = MONUMENT, --- = PROPERTY LINE, - - - = CENTERLINE, - - - - - = EASEMENT LINE
 A SURVEY OF A PARCEL OF LAND
 STANDING IN THE NAME OF WILBUR C. ANDERSON
 LYING IN BERKELEY DISTRICT, JAMES CITY COUNTY, VIRGINIA
 SCALE: 1" = 30' REF: J. O. 1471 DATE: JULY 19, 1973 CLOSURE: AREA 0.563 AC.

