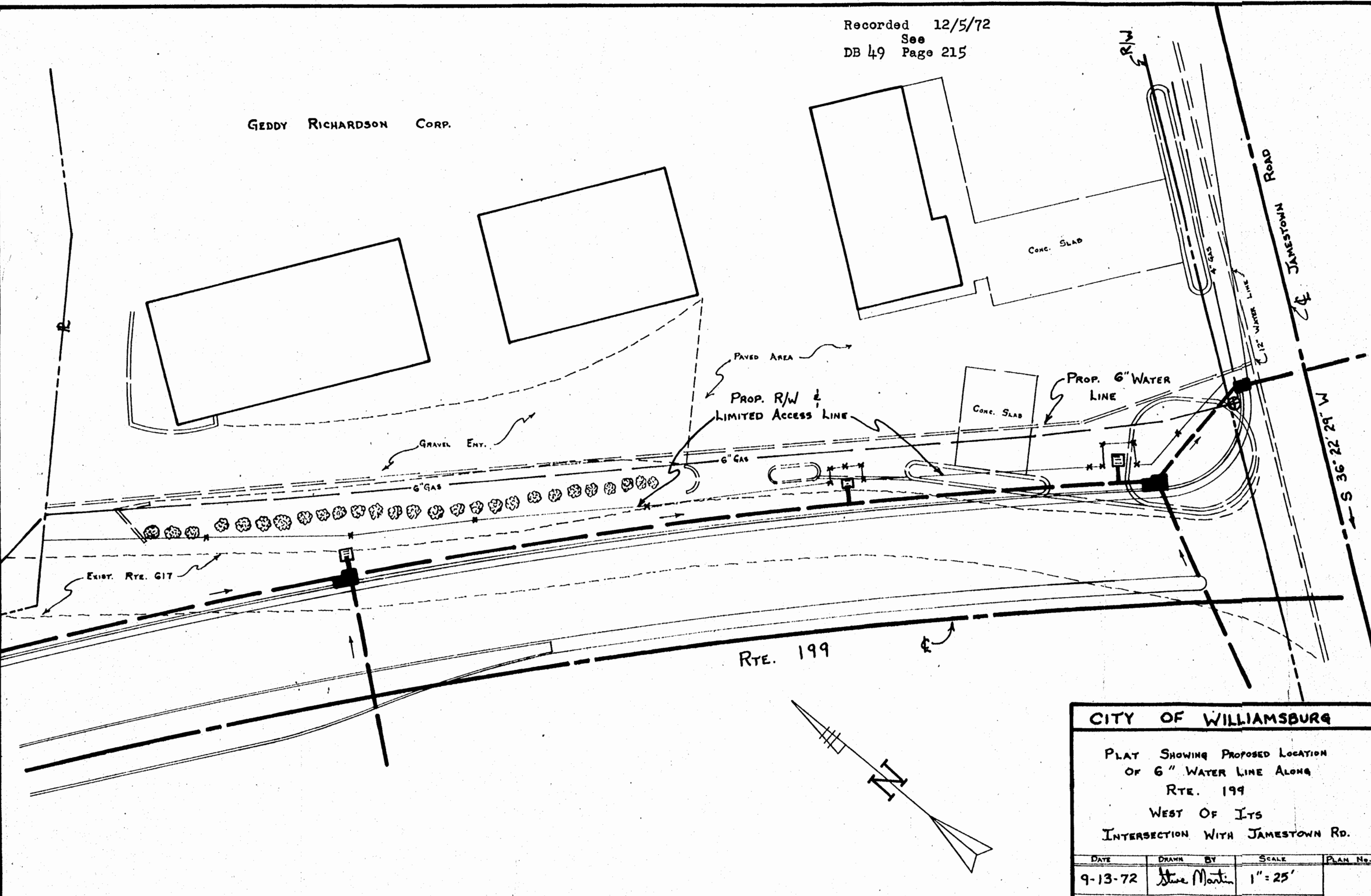


Recorded 12/5/72
See DB 49 Page 215

GEDDY RICHARDSON CORP.



CITY OF WILLIAMSBURG

PLAT SHOWING PROPOSED LOCATION
OF 6" WATER LINE ALONG
RTE. 199
WEST OF ITS
INTERSECTION WITH JAMESTOWN RD.

DATE	DRAWN BY	SCALE	PLAN No.
9-13-72	Steve Martin	1" = 25'	