

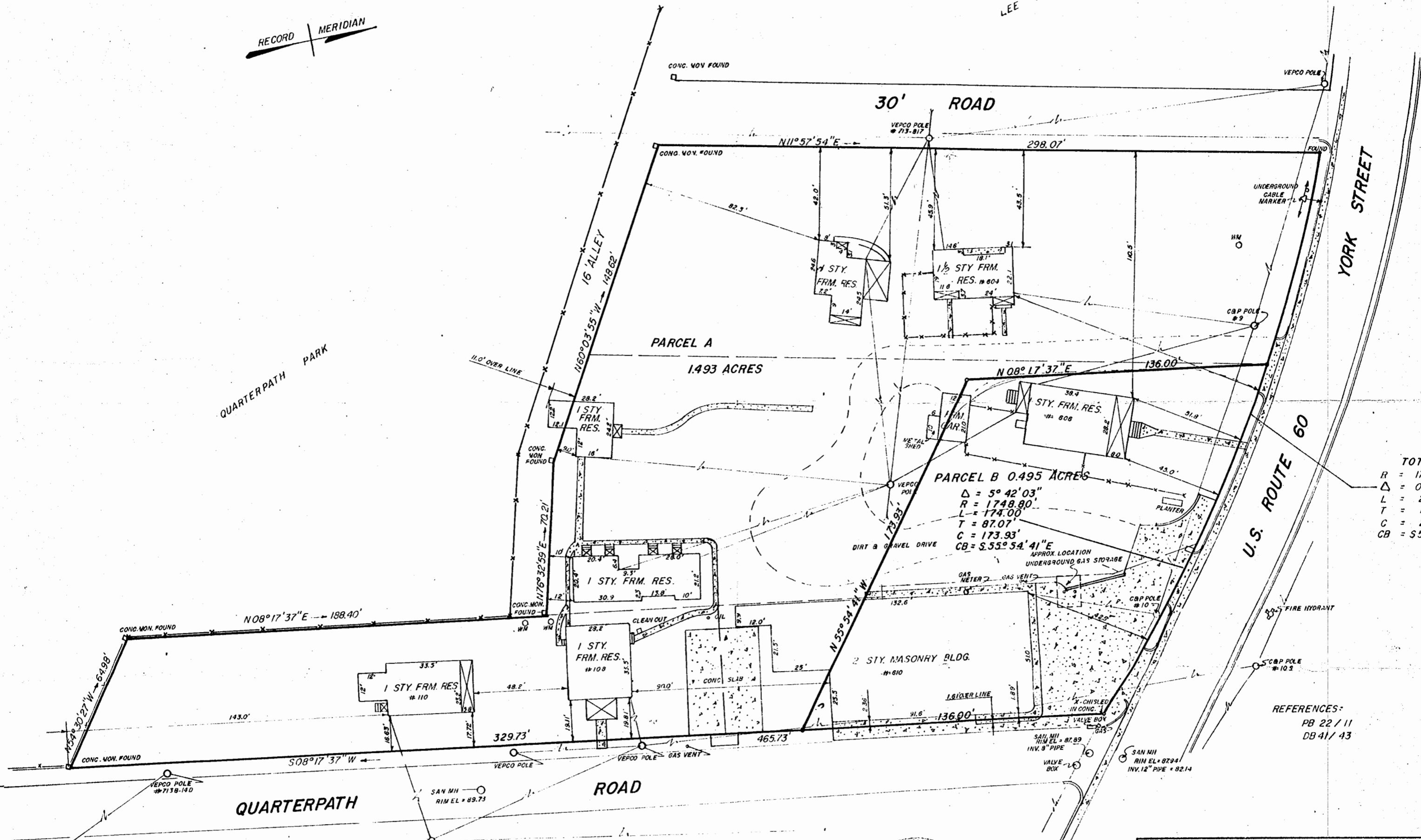
RECORD MERIDIAN

LEE WILLIAMS

QUARTERPATH PARK

YORK STREET

U.S. ROUTE 60



TOTAL  
 R = 1748.80'  
 Δ = 08°52'25"  
 L = 270.84'  
 T = 135.69'  
 C = 270.57'  
 CB = S57°29'50"E

PARCEL B 0.495 ACRES  
 Δ = 5°42'03"  
 R = 1748.80'  
 L = 174.00'  
 T = 87.07'  
 C = 173.93'  
 CB = S55°54'41"E

REFERENCES:  
 PB 22 / 11  
 DB 41 / 43

- LEGEND:
- IRON PIPE
  - CONCRETE MONUMENT
  - WM WATER METER
  - CONCRETE
  - FORMER LOT LINES

NOTES:  
 AREA = 86,626 SQ. FT. = 1.988 ACRES



L. V. WOODSON & ASSOCIATES  
 ENGINEERS & SURVEYORS  
 P. O. BOX 633 WILLIAMSBURG, VIRGINIA

A SURVEY FOR CONVEYANCE - CHARLES M. & NELL G. PETERSON TO KENRICH CORPORATION - 1.988 ACRES & IMPROVEMENTS LYING IN CITY OF WILLIAMSBURG, VIRGINIA

SCALE: 1" = 30' DWG. 744 REV MAY 24, 1972  
 DATE: DECEMBER 29, 1971

