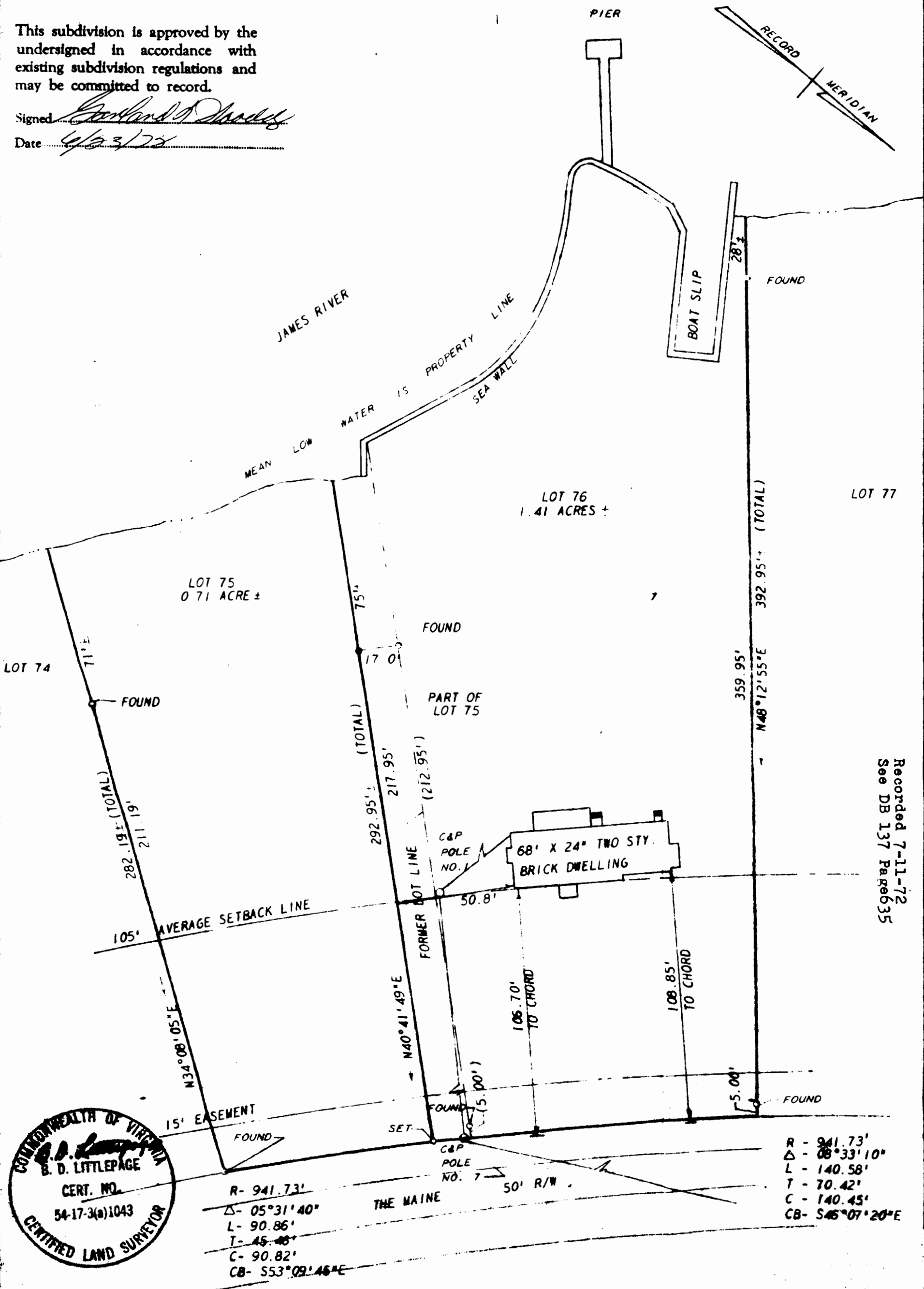


This subdivision is approved by the undersigned in accordance with existing subdivision regulations and may be committed to record.

Signed Garland D. Moody
 Date 4/23/72



Recorded 7-11-72
 See DB 137 Page 635



R - 941.73'
 Δ - 05°31'40"
 L - 90.86'
 T - 45.48'
 C - 90.82'
 CB - 553°09'45"E

R - 941.73'
 Δ - 08°33'10"
 L - 140.58'
 T - 70.42'
 C - 140.45'
 CB - 545°07'20"E

L. V. WOODSON & ASSOCIATES ENGINEERS & SURVEYORS, P. O. BOX 633 WILLIAMSBURG, VIRGINIA 23185

LEGEND: ● = IRON PIN, □ = MONUMENT, — = PROPERTY LINE, - - - = CENTERLINE, - - - - = EASEMENT LINE

RESUBDIVISION OF LOTS 75 & 76, SECTION 3, FIRST COLONY
 BERKELEY DISTRICT, JAMES CITY COUNTY, VIRGINIA

SCALE: 1" = 40' REF: PB 21/9 CLOSURE: J.O. 996 DATE: 5/1/72 PAGE: 2 OF 2