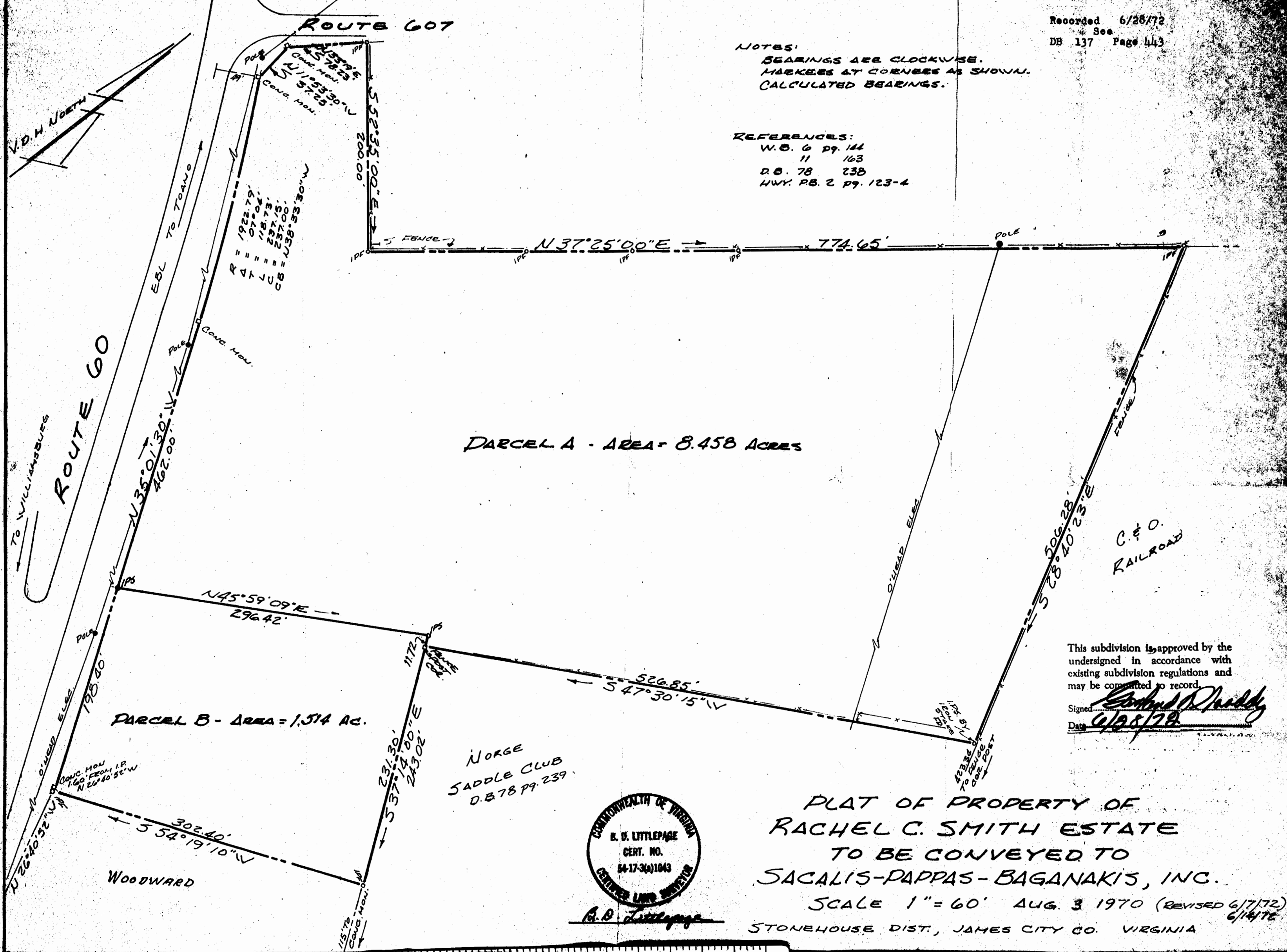


Recorded 6/28/72
See DB 137 Page 443

NOTES:
BEARINGS ARE CLOCKWISE.
MARKERS AT CORNERS AS SHOWN.
CALCULATED BEARINGS.

REFERENCES:
W.B. 6 pg. 144
" 11 163
D.B. 78 238
HWY. PB. 2 pg. 123-4



Curve Data:
R = 1922.79'
Δ = 07° 04'
L = 118° 73'
LC = 237.15'
CB = 237.00'
CS = 238.33' 30" W

DARCEL A - AREA = 8.458 ACRES

DARCEL B - AREA = 1.514 AC.

NORGE
SADDLE CLUB
D.B. 78 P. 239



B. D. Littlepage

PLAT OF PROPERTY OF
RACHEL C. SMITH ESTATE
TO BE CONVEYED TO
SACALIS-PAPPAS-BAGANAKIS, INC.

SCALE 1" = 60' AUG. 3 1970 (REVISED 6/7/72)
6/14/72
STONEHOUSE DIST., JAMES CITY CO. VIRGINIA

This subdivision is approved by the undersigned in accordance with existing subdivision regulations and may be committed to record.

Signed *Robert D. Duddy*
Date *6/28/72*

V.D.H. NORTH
ROUTE 60
TO WILLIAMSBURG

EBL TO TOANO

C. & O.
RAILROAD

WOODWARD

