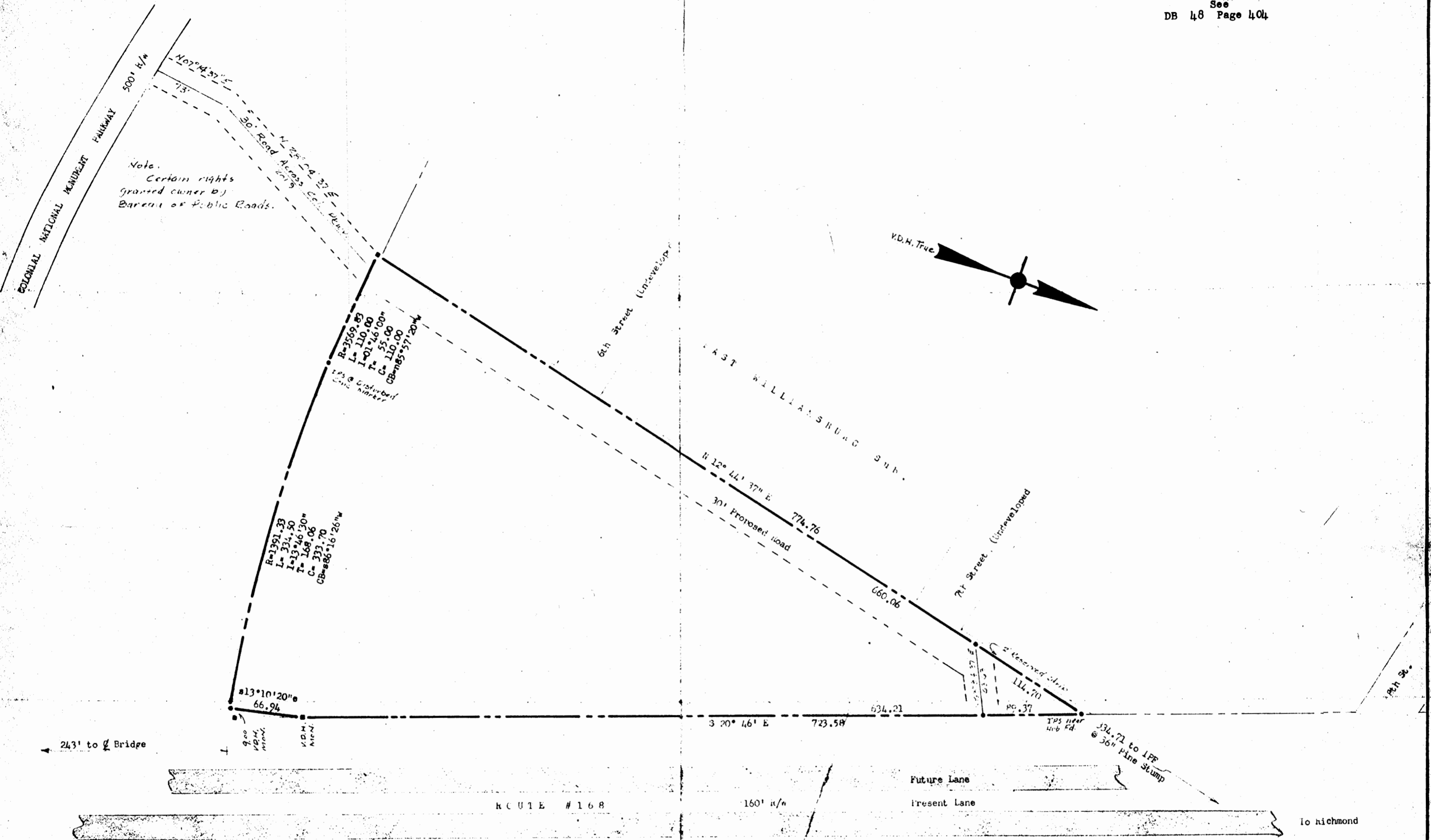
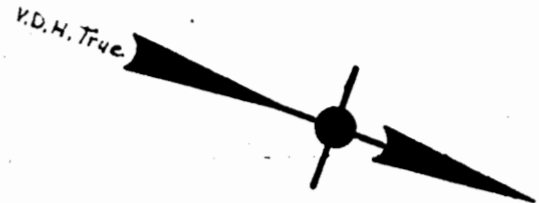


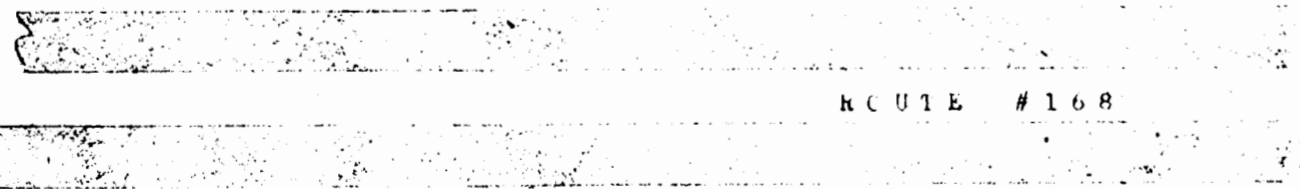
Recorded 6/8/72
See
DB 48 Page 404



Note:
Certain rights
granted owner by
Bureau of Public Roads.



243' to Bridge



Stephen Stephens

NOTE: AREA = 3.995 Acres.
 iron pipes at all corners
 except as noted.
 bearings are clockwise.
 ref.: York County L.O. #57, p. #120
 " " 50 75
 See note above.
 Revision: 1-9-71 by S.S.

PLAT of:
 That part of property of:
 B. E. STEBL
 To be conveyed to:
PARKWAY TOWERS, INC.
 Scale: 1" = 60' Feb. 1966
 Formerly: BRUTON DISTRICT, YORK COUNTY, VIRGINIA
 Annexed by: CITY OF WILLIAMSBURG, VIRGINIA