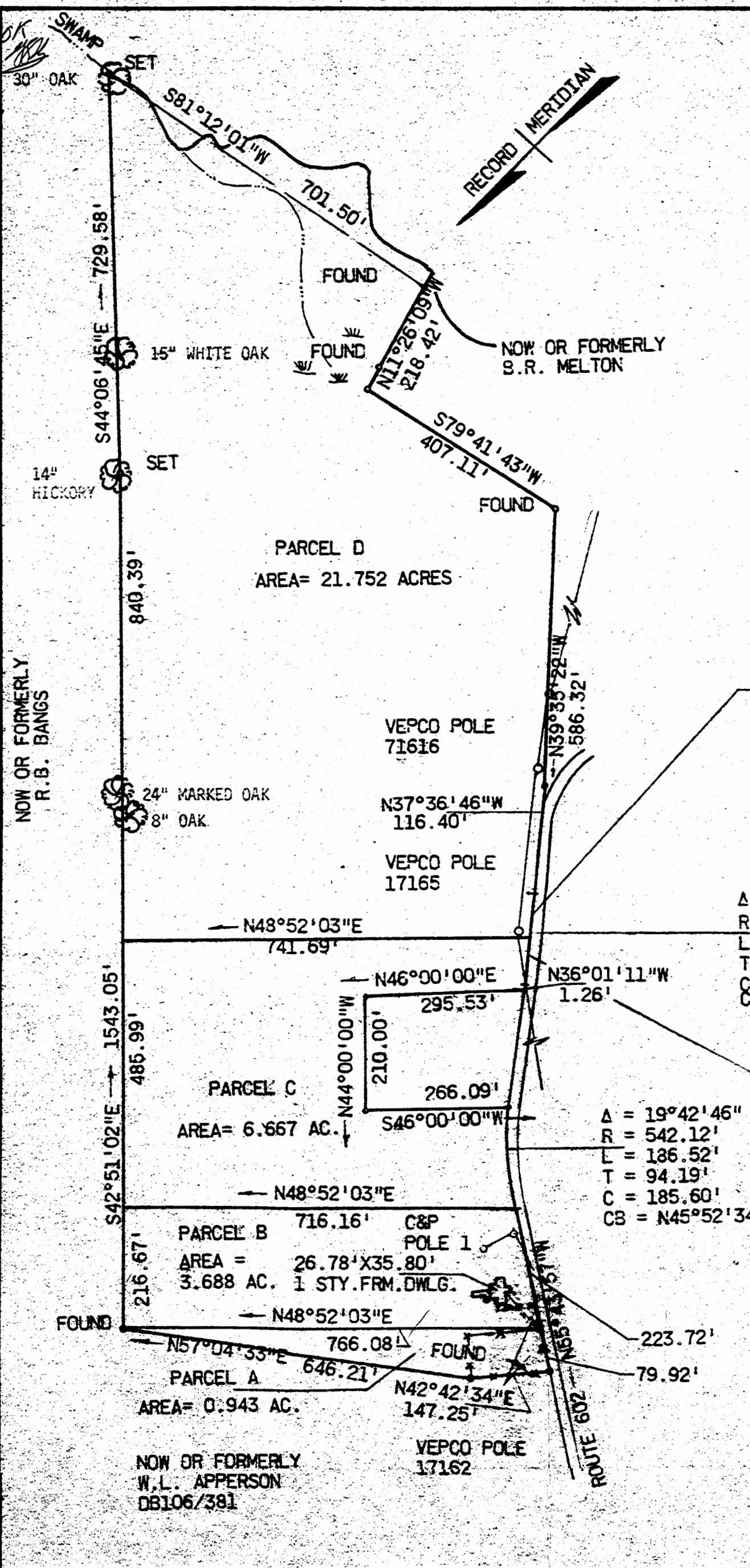


Recorded 3/17/72

SEE

D. B. 135, P. 696

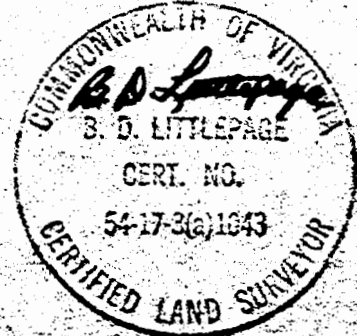


$\Delta = 00^\circ 48' 56''$   
 $R = 6523.725'$   
 $L = 92.988'$   
 $T = 46.495'$   
 $C = 92.987'$   
 $CH = N37^\circ 12' 18'' W$

$\Delta = 1^\circ 35' 35''$   
 $R = 6532.73'$   
 $L = 181.64'$   
 $T = 90.82'$   
 $C = 181.63'$   
 $CB = N36^\circ 48' 59'' W$

$\Delta = 00^\circ 46' 39''$   
 $R = 6532.725'$   
 $L = 88.649'$   
 $T = 44.325'$   
 $C = 88.65'$   
 $CH = N36^\circ 24' 31''$

$\Delta = 19^\circ 42' 46''$   
 $R = 542.12'$   
 $L = 136.52'$   
 $T = 94.19'$   
 $C = 185.60'$   
 $CB = N45^\circ 52' 34'' W$



L.V. WOODSON & ASSOCIATES ENGINEERS & SURVEYORS, P. O. BOX 633 WILLIAMSBURG, VIRGINIA 23185

LEGEND: ● = IP = IRON PIN, □ = MON = MONUMENT, — = PROPERTY LINE, — — — = CENTERLINE, - - - - = EASEMENT LINE

A SURVEY OF 33.95 ACRES OF LAND STANDING IN THE NAME OF WILLIAM E. APPERSON & LYING IN STONEHOUSE DISTRICT, JAMES CITY COUNTY, VIRGINIA

SCALE: 1" = 200' REF: DB48/23 CLOSURE J.O. 729 DATE 2/9/72 AREA 33.050 AC