

U.S. NATIONAL PARK SERVICE

PLAT SHOWING A PORTION OF  
EAST WILLIAMSBURG SUBDIVISION  
CITY OF WILLIAMSBURG, VIRGINIA.

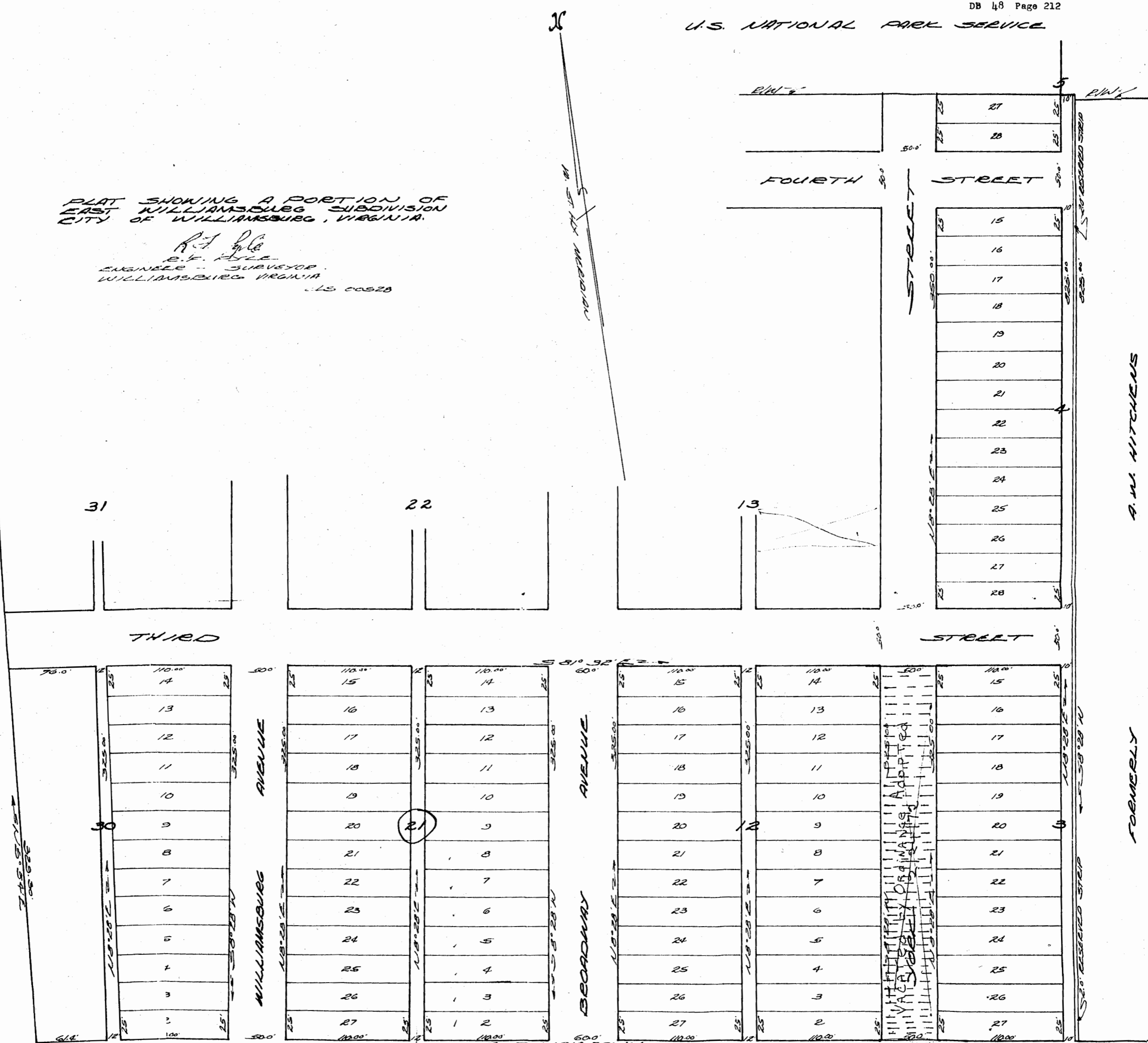
R. F. Kyle  
E. F. Kyle  
ENGINEER - SURVEYOR  
WILLIAMSBURG, VIRGINIA  
L.S. 00520

PINE CREST SUBDIVISION

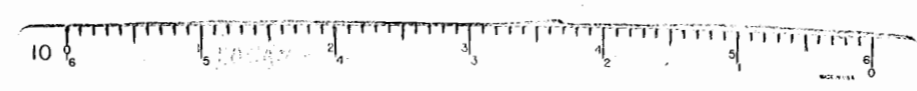
FORMERLY  
MURPHY SUTTON

FORMERLY  
A. W. HITCHENS

FORMERLY



SECOND VA. ST. HIGHWAY ROUTE NUMBER 162 STREET



BROOKS Agency INC  
P.O. Box 67  
Williamsburg VA 23185