

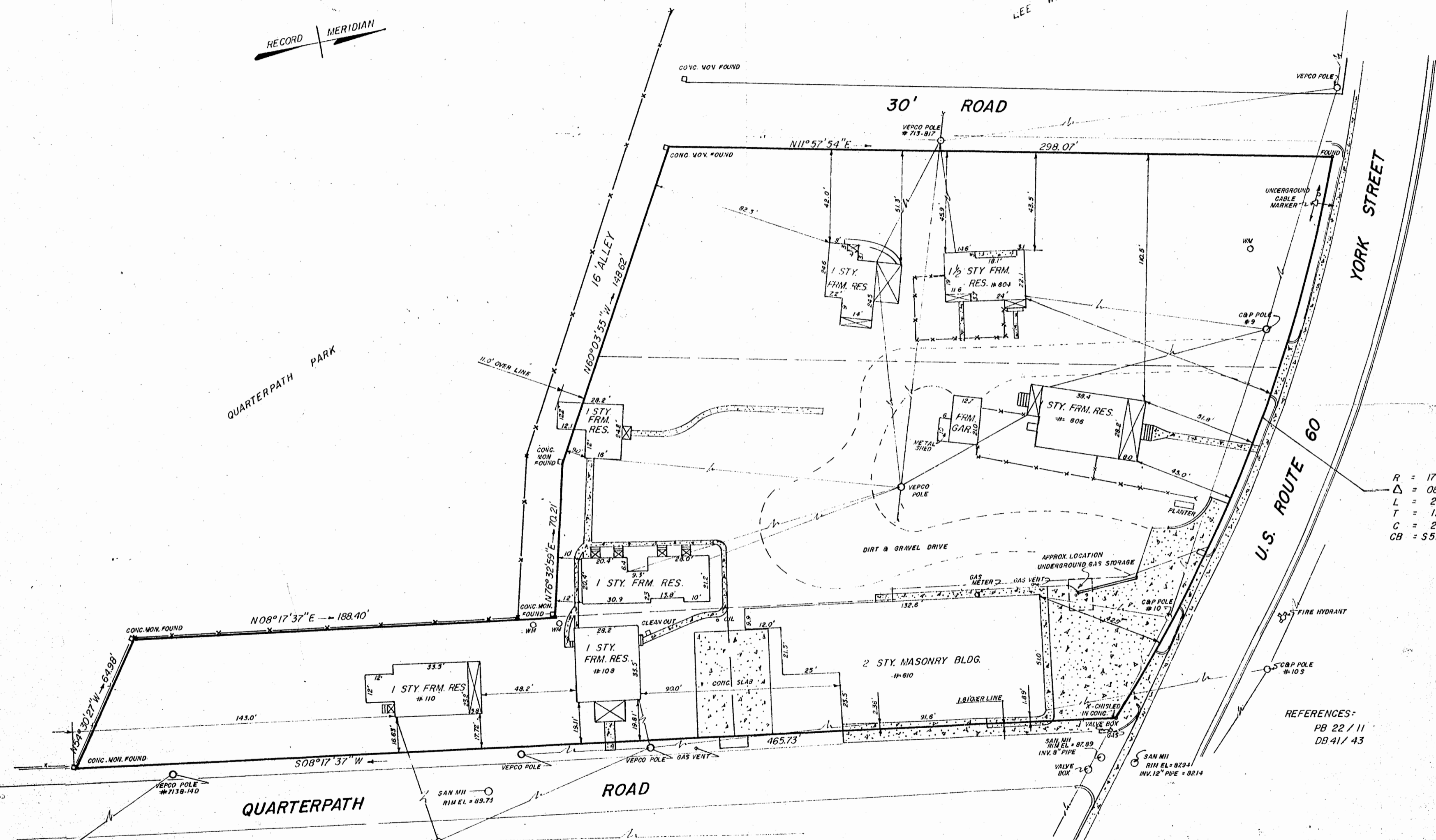
RECORD MERIDIAN

LEE WILLIAMS

QUARTERPATH PARK

YORK STREET

U.S. ROUTE 60



$R = 1748.80'$
 $\Delta = 08^{\circ}52'25''$
 $L = 270.84'$
 $T = 135.69'$
 $C = 270.57'$
 $CB = S57^{\circ}29'50''E$

REFERENCES:
 PB 22 / 11
 DB 41 / 43

- LEGEND:
- IRON PIPE
 - CONCRETE MONUMENT
 - WM WATER METER
 - ▣ CONCRETE
 - FORMER LOT LINES

NOTES:
 AREA = 86,626 SQ. FT. = 1.988 ACRES



L. V. WOODSON & ASSOCIATES
 ENGINEERS & SURVEYORS
 P. O. BOX 633 WILLIAMSBURG, VIRGINIA
A SURVEY FOR CONVEYANCE - CHARLES M. & NELL G. PETERSON TO KENRICH CORPORATION - 1.988 ACRES & IMPROVEMENTS LYING IN CITY OF WILLIAMSBURG, VIRGINIA

SCALE: 1" = 30'
 DATE: DECEMBER 29, 1971

DWG. **744**

