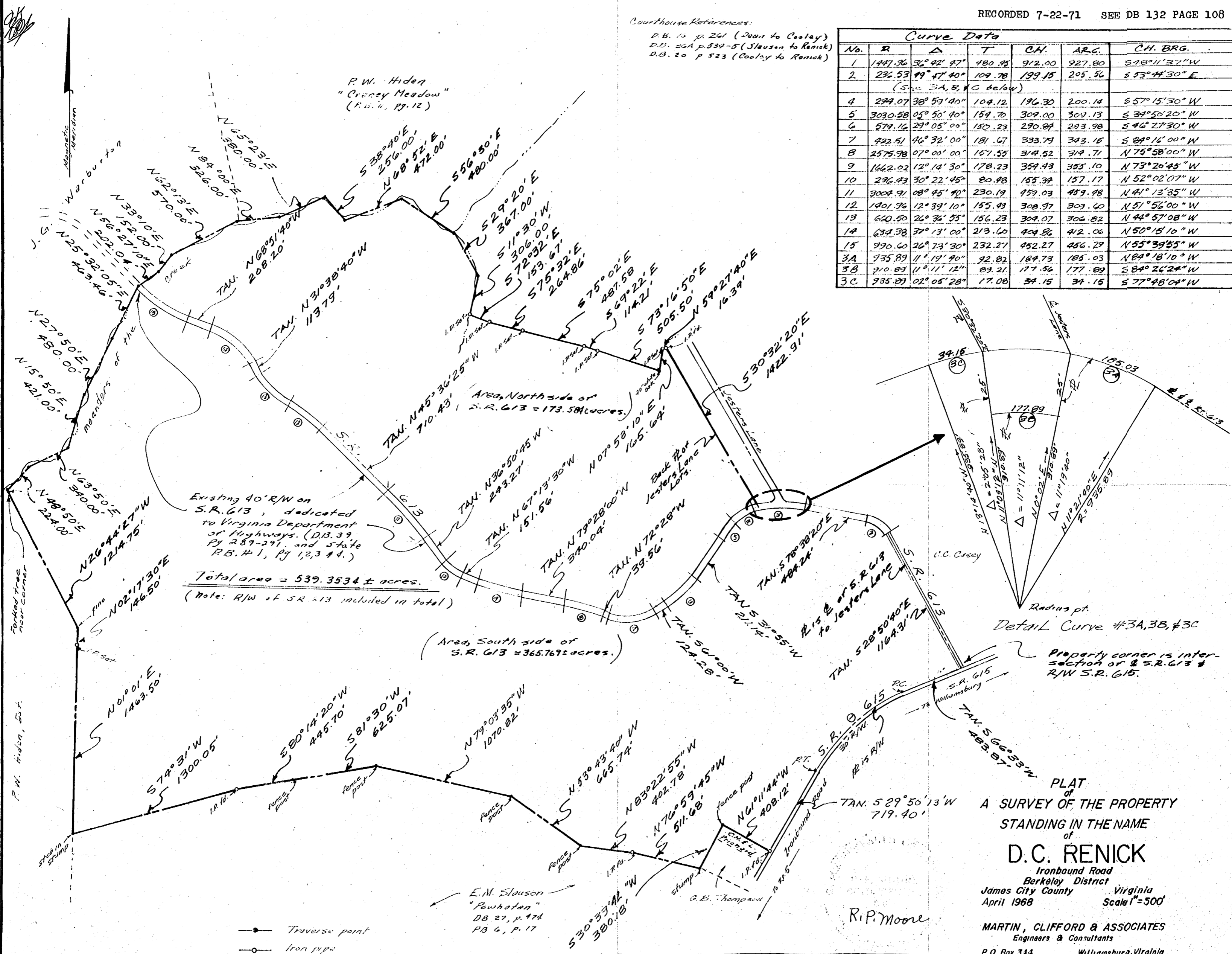


Courthouse References:

- D.B. 15 p. 261 (Dean to Cooley)
- D.B. 26A p. 534-5 (Slouson to Renick)
- D.B. 20 p. 523 (Cooley to Renick)

Curve Data						
No.	R	Δ	T	CH.	ARC.	CH. BRG.
1	1447.96	36° 02' 47"	480.48	912.00	927.80	S 48° 11' 32" W
2	236.53	49° 47' 40"	109.78	199.15	205.56	S 53° 44' 30" E
(S. 3A, B, & C below)						
4	294.07	38° 59' 40"	104.12	196.30	200.14	S 57° 15' 30" W
5	3030.58	05° 50' 40"	154.70	309.00	309.13	S 34° 50' 20" W
6	579.16	29° 05' 00"	150.23	290.89	293.98	S 46° 27' 30" W
7	422.51	46° 32' 00"	181.67	333.79	343.15	S 84° 16' 00" W
8	2575.98	07° 00' 00"	157.55	314.52	314.71	N 75° 58' 00" W
9	1662.02	12° 14' 30"	178.23	354.43	365.10	N 73° 20' 45" W
10	296.43	30° 22' 45"	80.98	155.39	157.17	N 52° 02' 07" W
11	3002.91	08° 45' 40"	230.19	459.03	459.48	N 41° 13' 35" W
12	1401.96	12° 39' 10"	155.43	308.97	309.60	N 51° 56' 00" W
13	660.50	26° 36' 55"	156.23	304.07	306.82	N 44° 57' 08" W
14	634.38	37° 13' 00"	213.60	404.86	412.06	N 50° 15' 10" W
15	390.60	26° 23' 30"	232.27	452.27	456.29	N 55° 39' 55" W
3A	935.89	11° 19' 40"	92.82	184.73	185.03	N 84° 18' 10" W
3B	910.89	11° 11' 12"	89.21	177.56	177.89	S 84° 26' 24" W
3C	935.89	02° 05' 28"	17.08	34.15	34.15	S 77° 48' 04" W



● Traverse point
○ Iron pipe

