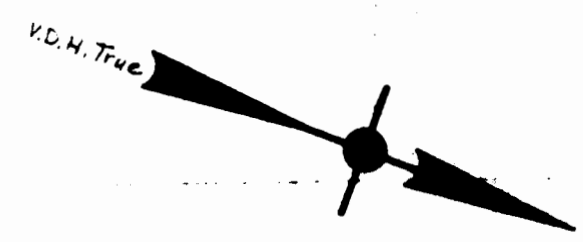
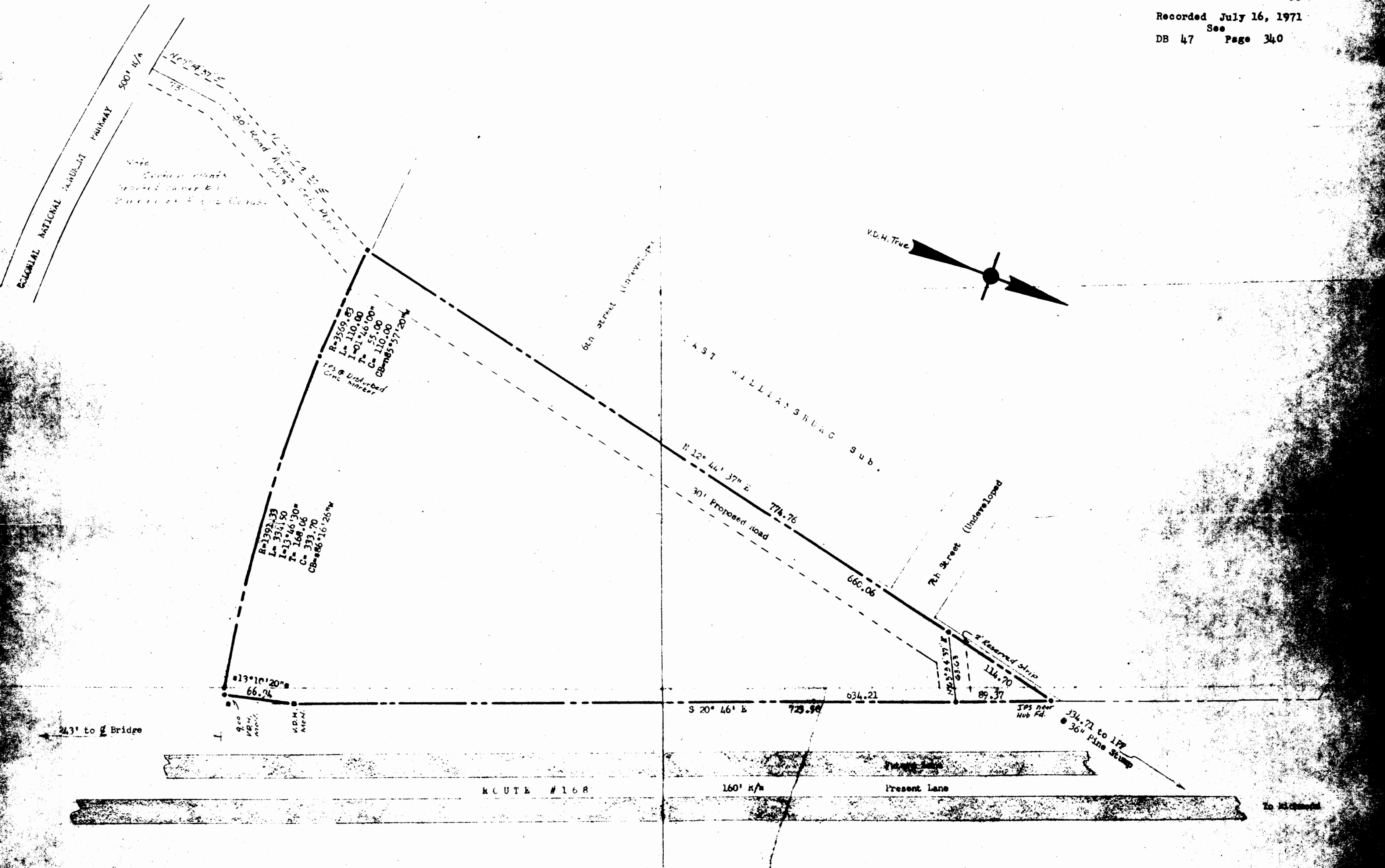
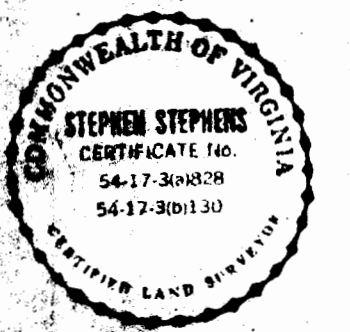


Recorded July 16, 1971

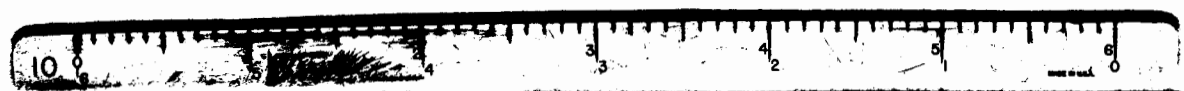
DB 47 See Page 340



243' to Bridge



Stephen Stephens



NOTE: Area of 3.995 Acres.
 Iron pipes at all corners
 except as noted.
 Bearings are clockwise.
 Ref: York County D.D. #57, p. #120
 " " " 50 " 75
 See note above.
 Revision: 1-9-71 by S.S.

PLAT of
 That part of Property of
 B. E. SHELL
 To be conveyed to:
 PARKWAY COMPANY, INC.
 Scale: 1" = 60'
 Formerly: BATHON DISTRICT, YORK COUNTY,
 Annexed by: CITY OF WILLIAMSBURG, VIRGINIA