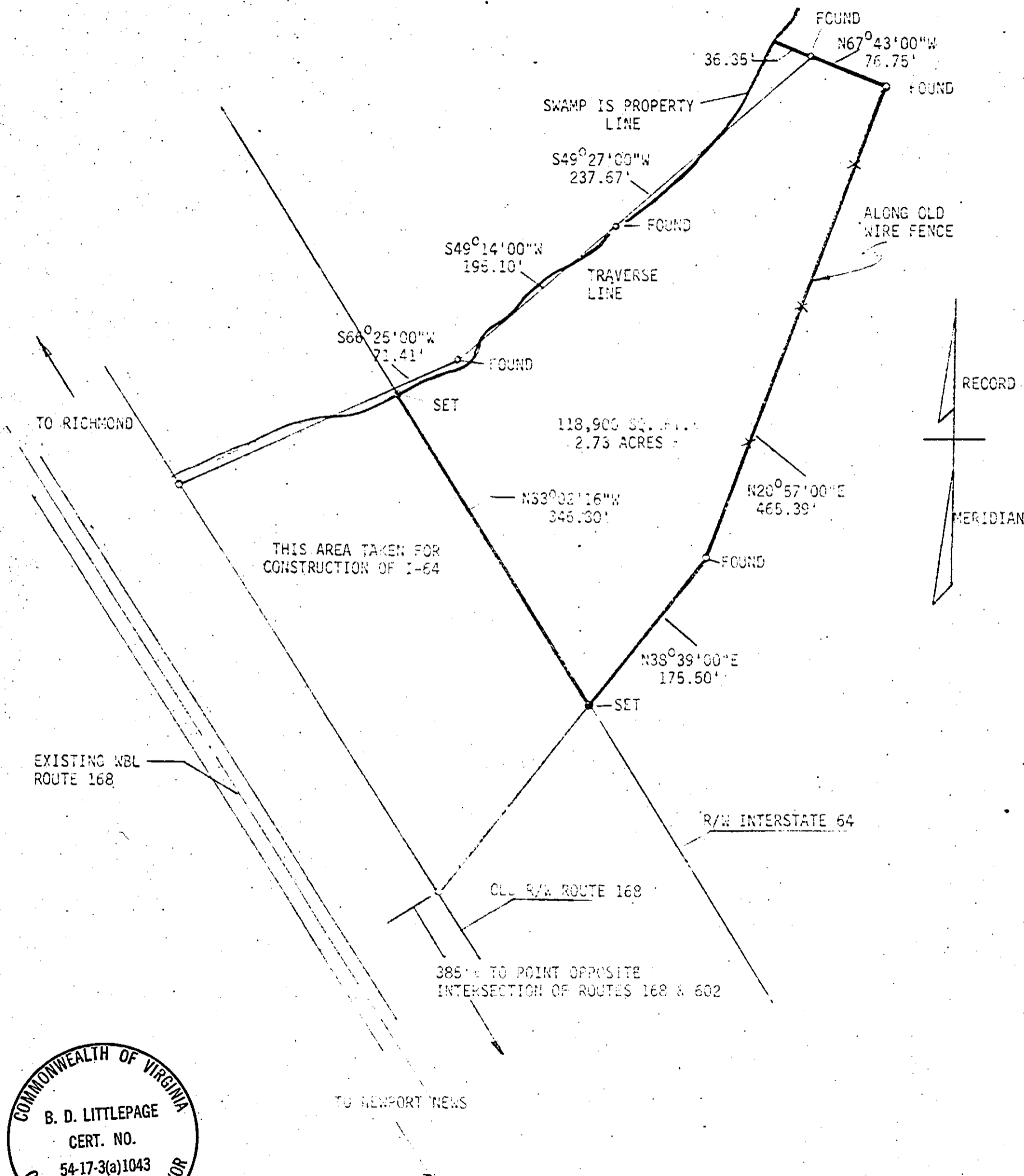


Recorded 4/27/71
See
DB 131 Page 17

OK
[Handwritten signature]



*REF: VDH PROJ#0064-047-101 R/W 202, 0064-047-101, C-302, SHEET 1, OF 36/36p					
L.V. WOODSON & ASSOCIATES		ENGINEERS & SURVEYORS, P. O. BOX 633		WILLIAMSBURG, VIRGINIA 23185	
LEGEND: ○ = IP - IRON PIN, □ = MON - MONUMENT, — = PROPERTY LINE, - - - = CENTERLINE, - - - - = EASMENT LINE					
A SURVEY FOR CONVEYANCE - ELIZABETH W. BANKS & RAO L. BANKS II, TO GARNETT H. GRIFFETH - 2.73 ACRES LYING IN STONEHOUSE DISTRICT JAMES CITY COUNTY, VIRGINIA					
SCALE 1"=100'	REF: *	CLOSURE --	J. C. 459	DATE 4-20-71	AREA 2.73 AC.