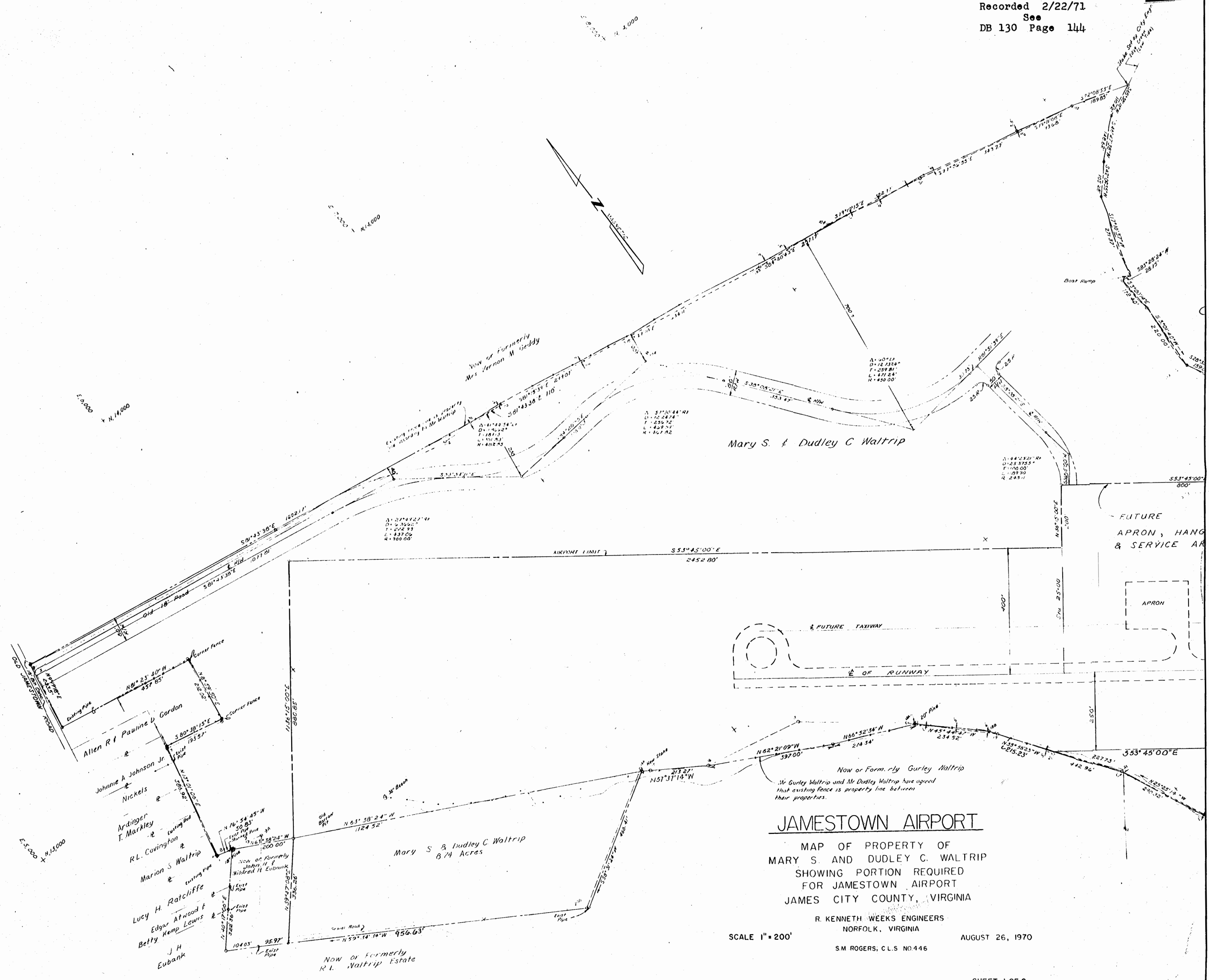


Recorded 2/22/71
See
DB 130 Page 144



JAMESTOWN AIRPORT

MAP OF PROPERTY OF
MARY S. AND DUDLEY C. WALTRIP
SHOWING PORTION REQUIRED
FOR JAMESTOWN AIRPORT
JAMES CITY COUNTY, VIRGINIA

R. KENNETH WEEKS ENGINEERS
NORFOLK, VIRGINIA

SCALE 1" = 200'

AUGUST 26, 1970

S.M. ROGERS; C.L.S. NO. 446