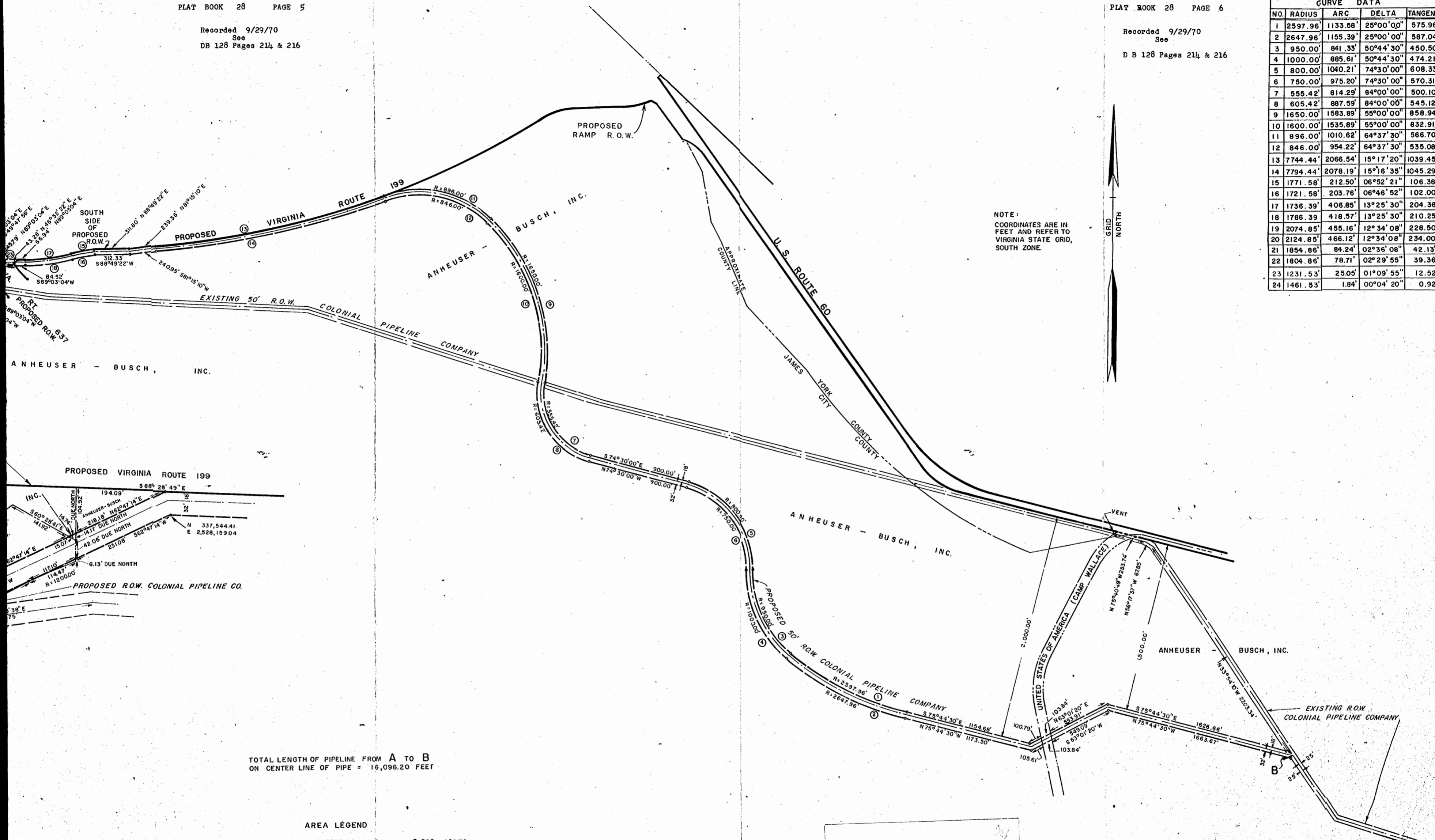


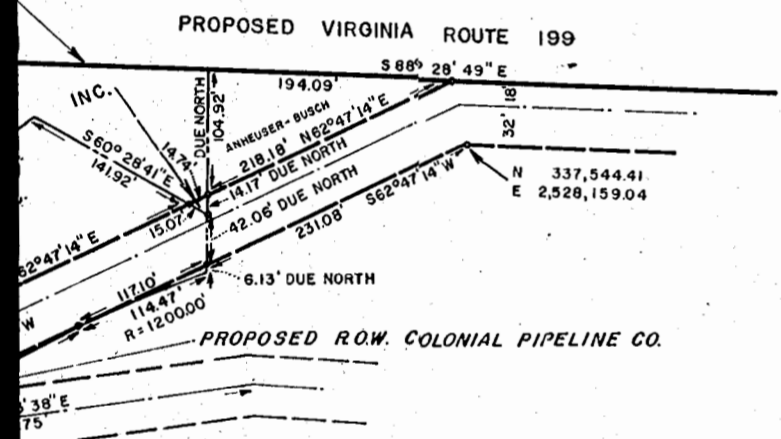
Recorded 9/29/70
See
DB 128 Pages 214 & 216

Recorded 9/29/70
See
D B 128 Pages 214 & 216

CURVE DATA				
NO.	RADIUS	ARC	DELTA	TANGENT
1	2597.96'	1133.58'	25°00'00"	575.96'
2	2647.96'	1155.39'	25°00'00"	587.04'
3	950.00'	841.33'	50°44'30"	450.50'
4	1000.00'	885.61'	50°44'30"	474.21'
5	800.00'	1040.21'	74°30'00"	608.33'
6	750.00'	975.20'	74°30'00"	570.31'
7	555.42'	814.29'	84°00'00"	500.10'
8	605.42'	887.59'	84°00'00"	545.12'
9	1650.00'	1583.89'	55°00'00"	858.94'
10	1600.00'	1535.89'	55°00'00"	832.91'
11	896.00'	1010.62'	64°37'30"	566.70'
12	846.00'	954.22'	64°37'30"	535.08'
13	7744.44'	2066.54'	15°17'20"	1039.45'
14	7794.44'	2078.19'	15°16'35"	1045.29'
15	1771.58'	212.50'	06°52'21"	106.38'
16	1721.58'	203.76'	06°46'52"	102.00'
17	1736.39'	406.85'	13°25'30"	204.36'
18	1786.39'	418.57'	13°25'30"	210.25'
19	2074.85'	455.16'	12°34'08"	228.50'
20	2124.85'	466.12'	12°34'08"	234.00'
21	1854.86'	84.24'	02°36'08"	42.13'
22	1804.86'	78.71'	02°29'55"	39.36'
23	1231.53'	25.05'	01°09'55"	12.52'
24	1461.53'	1.84'	00°04'20"	0.92'



NOTE:
COORDINATES ARE IN FEET AND REFER TO VIRGINIA STATE GRID, SOUTH ZONE.



TOTAL LENGTH OF PIPELINE FROM A TO B
ON CENTER LINE OF PIPE = 16,096.20 FEET

AREA LEGEND

WILLIAMSBURG RESTORATION, INC.	0.002	ACRES
COLONIAL WILLIAMSBURG, INC.	0.39	ACRES
R.O.W. THROUGH VA. DEPT. HIGHWAYS AT VA. RT. 637	0.34	ACRES
CAMP WALLACE	0.12	ACRES
ANHEUSER - BUSCH, INC.	17.45	ACRES

PART
2.

PLAT
SHOWING
PROPOSED RELOCATION
OF
COLONIAL PIPELINE COMPANY
RIGHT OF WAY
THROUGH:
PROPERTY OF
ANHEUSER - BUSCH, INC.

JAMES CITY COUNTY, VIRGINIA
SCALE: 1" = 400'
MAY 26, 1970

BALDWIN AND GREGG
ENGINEERS - SURVEYORS - PLANNERS
NORFOLK, VIRGINIA