

I certify that this plat and subdivision was made by me at the direction of the owner, and that the subdivision is entirely within the boundaries of land covered by deeds duly of record in Clerk's Office of the Circuit Court of James City County in Deed Book 125 p. 101 and Deed Book 126 p. 183 and the Clerk's Office of the Circuit Court of York County in Deed Book 224 at p. 24. This subdivision as it appears on this plat conforms to the applicable regulations relating to the subdivision of land.

CURVE		DATA		
NO.	RADIUS	DELTA	TANGENT	LENGTH
1	597.96'	40°09'29"	218.57'	419.11'
2	573.75'	35°20'16"	182.76'	353.86'
3	776.78'	38°58'00"	274.82'	528.28'
4	2597.96'	20°40'48"	474.00'	957.69'

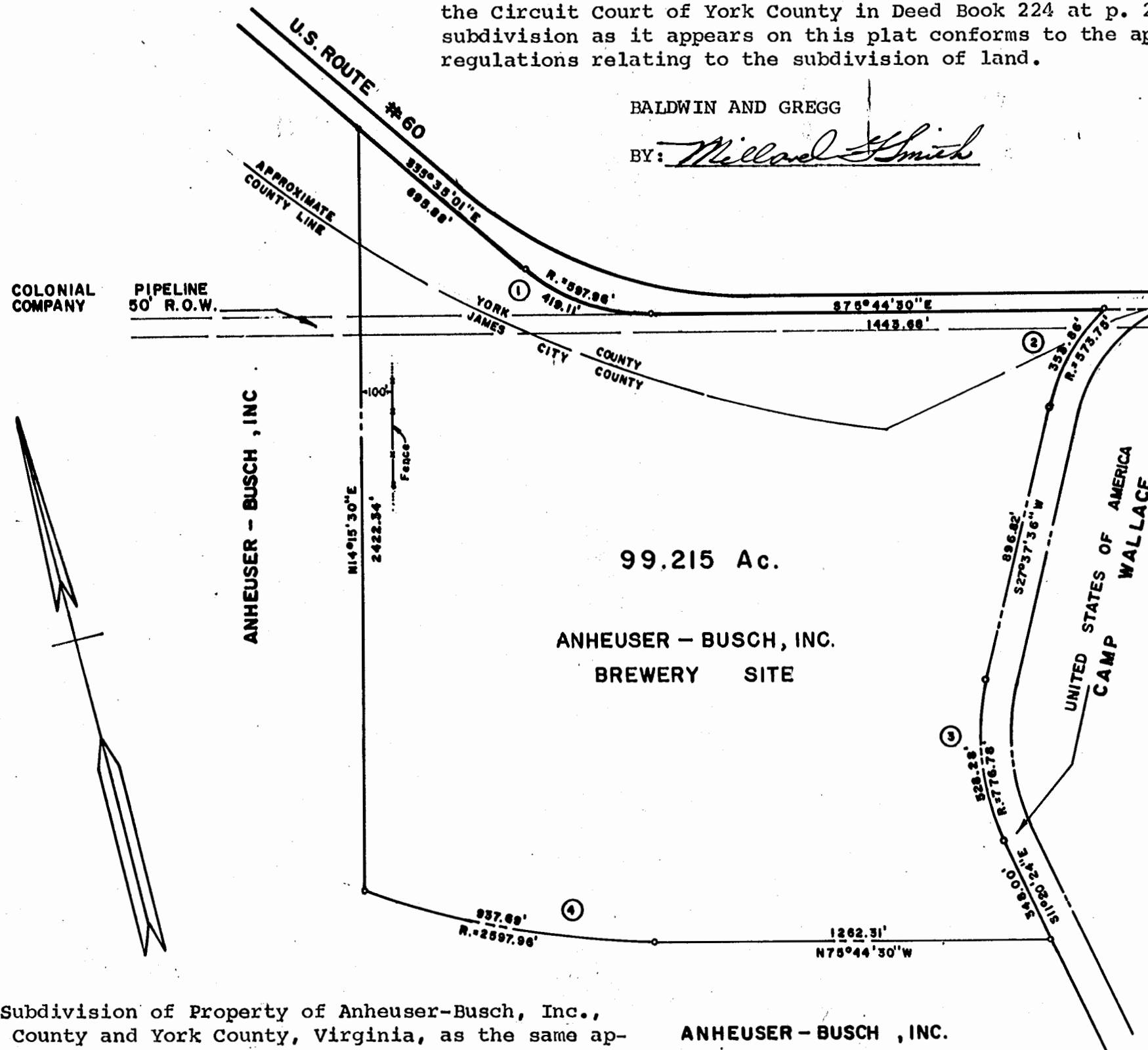
See  
DB 126 Page 569  
Recorded 6-15-70

BALDWIN AND GREGG

BY: *Millard Smith*

STATE OF *Missouri*  
CITY OF *St. Louis*

TO WIT:



I, *Blanche Huff*, a Notary Public in and for the City and State aforesaid, do hereby certify that *John H. Pahlmann and John L. Hayward* whose names are signed to the foregoing writing bearing date on the *8th* day of *June*, 1970, have acknowledged the same before me in my city and state aforesaid.

Given unto my hand this *8th* day of *June*, 1970.

My commission expires on: *Aug. 9, 1970*

*Blanche Huff*  
Notary Public

This Subdivision of Property of Anheuser-Busch, Inc., James City County and York County, Virginia, as the same appears on this plat is with the free consent and in accordance with the desires of the undersigned owner.

Attest: Anheuser-Busch, Inc.

*John L. Hayward*  
Secretary

By *John H. Pahlmann*  
Vice President

SUBDIVISION  
OF PROPERTY OF  
**ANHEUSER - BUSCH, INC.**  
YORK COUNTY  
AND  
JAMES CITY COUNTY, VIRGINIA

SCALE: 1" = 400' MAY 26, 1970  
BALDWIN AND GREGG  
ENGINEERS · SURVEYORS · PLANNERS  
NORFOLK, VIRGINIA