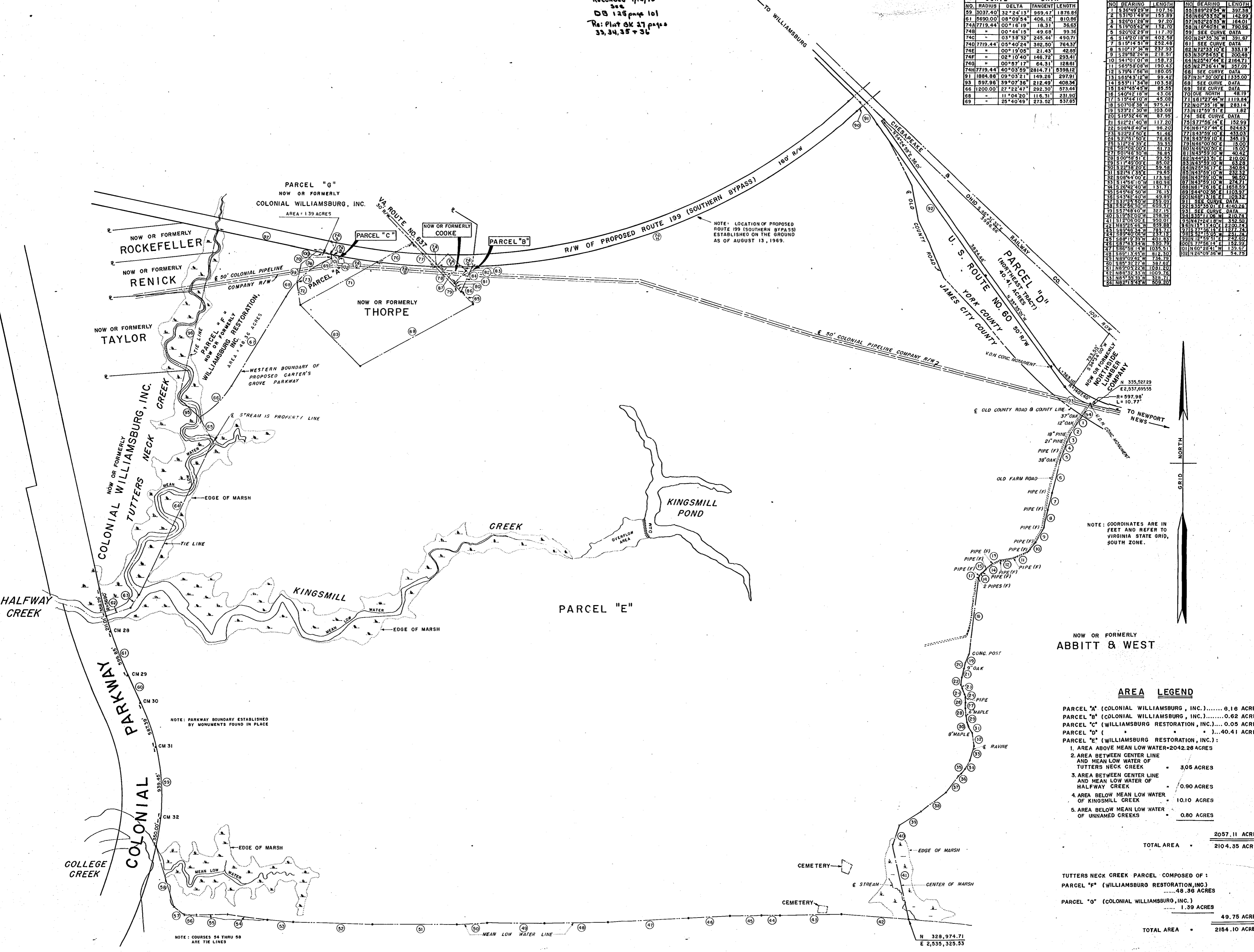


Recorded 1/15/70
see
DB 125 page 101
Re: Plat BK 37 page
33, 34, 35 & 36

NO.	CURVE DATA			PROPERTY LINE DATA	
	RADIUS	DELTA	TANGENT	BEARING	LENGTH
1	33649.29	00°00'00"	0.00	S89°29'54" W	397.38
2	53101.49	00°00'00"	0.00	S88°43'32" W	142.39
3	32801.28	00°00'00"	0.00	S71°32'55" W	164.01
4	51904.22	00°00'00"	0.00	S11°27'00" W	780.58
5	52002.29	00°00'00"	0.00	S11°27'00" W	780.58
6	31425.18	00°00'00"	0.00	S24°35'36" W	391.67
7	31514.51	00°00'00"	0.00	S24°35'36" W	391.67
8	51071.92	00°00'00"	0.00	S22°33'10" E	333.19
9	52952.24	00°00'00"	0.00	S22°33'10" E	333.19
10	54101.01	00°00'00"	0.00	S25°47'44" E	2164.71
11	56538.08	00°00'00"	0.00	N27°38'41" W	357.09
12	57941.68	00°00'00"	0.00	N27°38'41" W	357.09
13	56543.12	00°00'00"	0.00	N31°30'00" E	1335.00
14	53311.34	00°00'00"	0.00	N31°30'00" E	1335.00
15	84745.45	00°00'00"	0.00	N43°59'51" E	1182.20
16	84745.45	00°00'00"	0.00	N43°59'51" E	1182.20
17	51544.10	00°00'00"	0.00	S61°27'44" W	1119.84
18	50708.38	00°00'00"	0.00	N07°35'16" W	283.14
19	52821.30	00°00'00"	0.00	N12°29'51" E	1.62
20	51252.46	00°00'00"	0.00	S12°29'51" E	1.62
21	51221.40	00°00'00"	0.00	S12°29'51" E	1.62
22	50848.40	00°00'00"	0.00	N61°27'44" E	624.63
23	32222.50	00°00'00"	0.00	S43°59'10" E	433.03
24	32191.50	00°00'00"	0.00	S43°59'10" E	433.03
25	3124.39	00°00'00"	0.00	N48°00'00" E	15.00
26	30105.00	00°00'00"	0.00	N48°00'00" E	15.00
27	30148.50	00°00'00"	0.00	N48°00'00" E	42.50
28	30048.51	00°00'00"	0.00	N48°23'51" E	210.00
29	31740.00	00°00'00"	0.00	N48°23'51" E	63.23
30	32238.20	00°00'00"	0.00	N42°25'51" E	340.84
31	32141.35	00°00'00"	0.00	N43°59'10" W	232.32
32	30844.00	00°00'00"	0.00	N43°59'10" W	36.50
33	31458.10	00°00'00"	0.00	N43°59'10" W	274.71
34	32648.40	00°00'00"	0.00	N43°59'10" W	1858.59
35	34342.40	00°00'00"	0.00	N43°59'10" W	1103.37
36	33744.50	00°00'00"	0.00	N43°59'10" W	210.74
37	31520.00	00°00'00"	0.00	N43°59'10" E	4100.26
38	31574.84	00°00'00"	0.00	N43°59'10" E	210.74
39	31500.00	00°00'00"	0.00	N43°59'10" E	4100.26
40	31500.00	00°00'00"	0.00	N43°59'10" E	4100.26
41	31500.00	00°00'00"	0.00	N43°59'10" E	4100.26
42	31852.46	00°00'00"	0.00	N43°59'10" E	2200.74
43	38948.50	00°00'00"	0.00	N43°59'10" E	1127.74
44	38948.50	00°00'00"	0.00	N43°59'10" E	1127.74
45	38919.50	00°00'00"	0.00	N43°59'10" E	242.00
46	38948.50	00°00'00"	0.00	N43°59'10" E	1127.74
47	38858.13	00°00'00"	0.00	N43°59'10" E	133.67
48	38913.45	00°00'00"	0.00	N43°59'10" E	242.00
49	38909.45	00°00'00"	0.00	N43°59'10" E	242.00
50	38932.21	00°00'00"	0.00	N43°59'10" E	1009.75
51	38909.45	00°00'00"	0.00	N43°59'10" E	1009.75
52	38932.21	00°00'00"	0.00	N43°59'10" E	1009.75
53	38955.59	00°00'00"	0.00	N43°59'10" E	1009.75
54	38913.45	00°00'00"	0.00	N43°59'10" E	242.00



NOTE: COORDINATES ARE IN FEET AND REFER TO VIRGINIA STATE GRID, SOUTH ZONE.

AREA LEGEND

- PARCEL "A" (COLONIAL WILLIAMSBURG, INC.)..... 6.16 ACRES
- PARCEL "B" (COLONIAL WILLIAMSBURG, INC.)..... 0.62 ACRES
- PARCEL "C" (WILLIAMSBURG RESTORATION, INC.).... 0.05 ACRES
- PARCEL "D" (.....)..... 40.41 ACRES
- PARCEL "E" (WILLIAMSBURG RESTORATION, INC.):

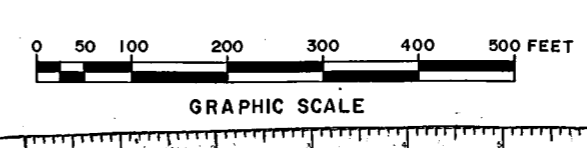
 - 1. AREA ABOVE MEAN LOW WATER-2042.28 ACRES
 - 2. AREA BETWEEN CENTER LINE AND MEAN LOW WATER OF TUTTERS NECK CREEK 3.05 ACRES
 - 3. AREA BETWEEN CENTER LINE AND MEAN LOW WATER OF HALFWAY CREEK 0.90 ACRES
 - 4. AREA BELOW MEAN LOW WATER OF KINGSMILL CREEK 10.10 ACRES
 - 5. AREA BELOW MEAN LOW WATER OF UNNAMED CREEKS 0.80 ACRES

- TOTAL AREA 2057.11 ACRES
- TOTAL AREA 2104.35 ACRES

TUTTERS NECK CREEK PARCEL COMPOSED OF:
 PARCEL "F" (WILLIAMSBURG RESTORATION, INC.) 48.36 ACRES
 PARCEL "G" (COLONIAL WILLIAMSBURG, INC.) 1.39 ACRES
 TOTAL AREA 49.75 ACRES
 TOTAL AREA 2164.10 ACRES

PLAT OF PROPERTY OF
WILLIAMSBURG RESTORATION, INC.
 AND
COLONIAL WILLIAMSBURG, INC.
 YORK COUNTY, VIRGINIA
 AND
 JAMES CITY COUNTY, VIRGINIA
 TO BE CONVEYED TO
ANHEUSER-BUSCH, INC

SCALE: 1" = 400' DECEMBER 31, 1969
 BALDWIN AND GREGG
 ENGINEERS - SURVEYORS - PLANNERS
 NO. 14, VIRGINIA



JAMES RIVER

FLOOD
 EBB

NOTE: COURSES 54 THRU 58 ARE TIE LINES

NOTE: PARKWAY BOUNDARY ESTABLISHED BY MONUMENTS FOUND IN PLACE

NOTE: LOCATION OF PROPOSED ROUTE 199 (SOUTHERN BYPASS) ESTABLISHED ON THE GROUND AS OF AUGUST 13, 1969.