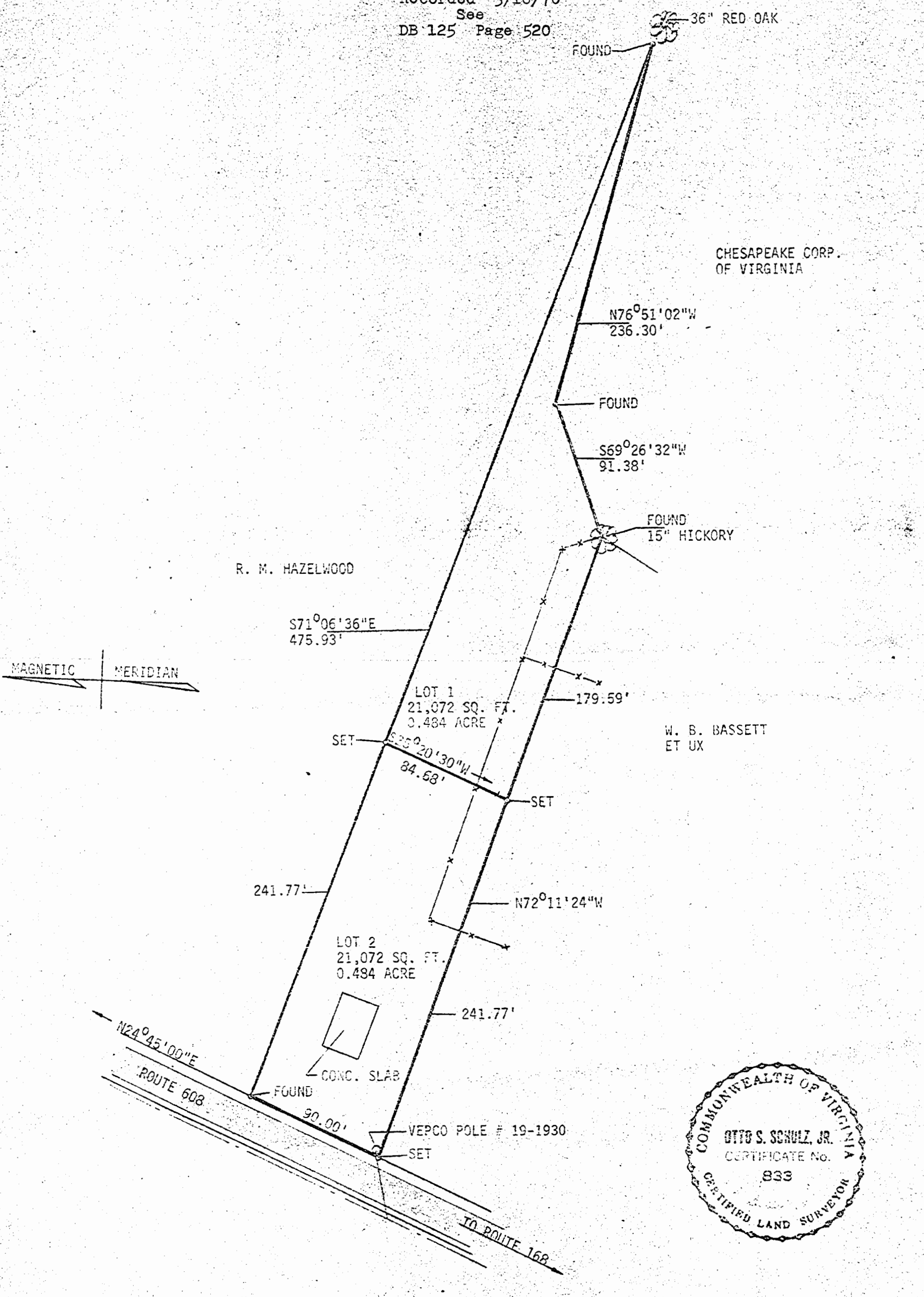


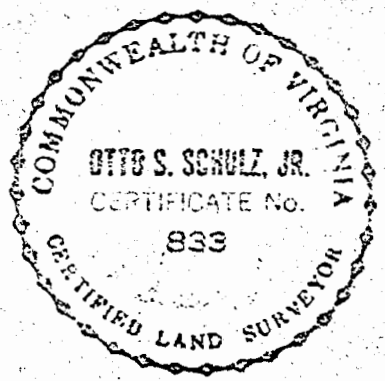
Recorded 3/18/70  
See DB 125 Page 520



CHESAPEAKE CORP.  
OF VIRGINIA

R. M. HAZELWOOD

W. B. BASSETT  
ET UX



L. V. WOODSON & ASSOCIATES ENGINEERS & SURVEYORS, P. O. BOX 633 WILLIAMSBURG, VIRGINIA 23185

LEGEND ○ = IP = IRON PIN, □ = MON = MONUMENT, — = PROPERTY LINE, - - - = CENTERLINE, - - - - = EASMENT LINE

PLAT SHOWING THE SUBDIVISION OF A PARCEL OF LAND STANDING IN THE NAME OF WILLIAM BOLDEN BASSETT & LYING IN STONEHOUSE DISTRICT, JAMES CITY COUNTY VIRGINIA

SCALE: 1"=60' REF: 72/307 CLOSURE 1/18" J. O. 226 DATE: AUGUST 4, 1969 AREA: 0.968 AC