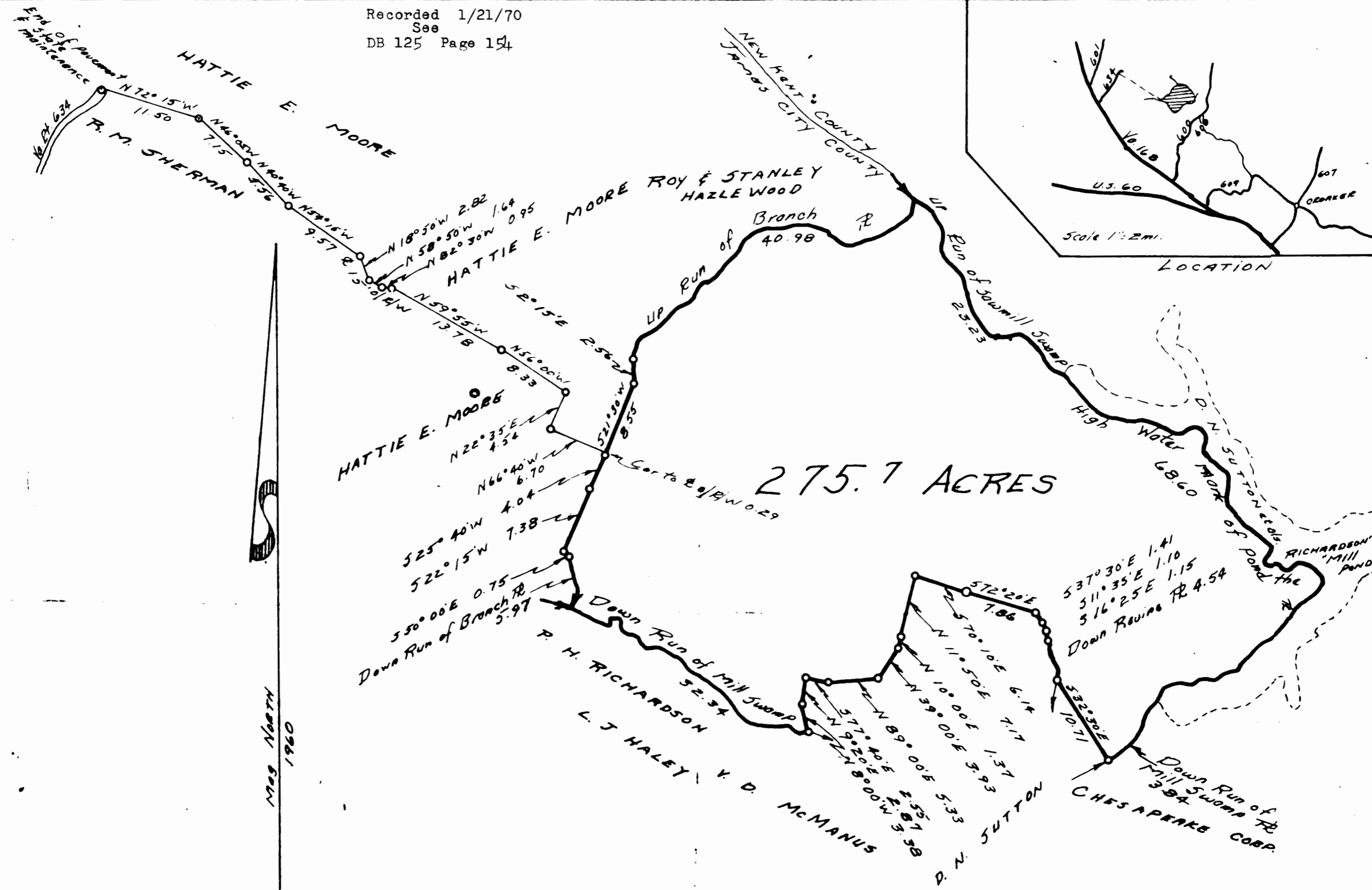


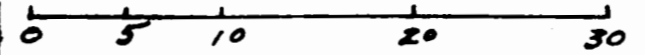
Recorded 1/21/70
See
DB 125 Page 154



275.7 ACRES

CONTINENTAL CAN COMPANY INC. No. 34-77L
 LAYFIELD-THOMAS OR POND TRACT - PARCEL No. 27
 275.7 ACRES
 STONE HOUSE DISTRICT - JAMES CITY COUNTY
 VIRGINIA

SCALE: 1 Inch = 10 Chains



Surveyed June, 1960 C. C. Williams C.L.S. No. Reg No 371

C & W PARCEL No. 27

Map North
1960