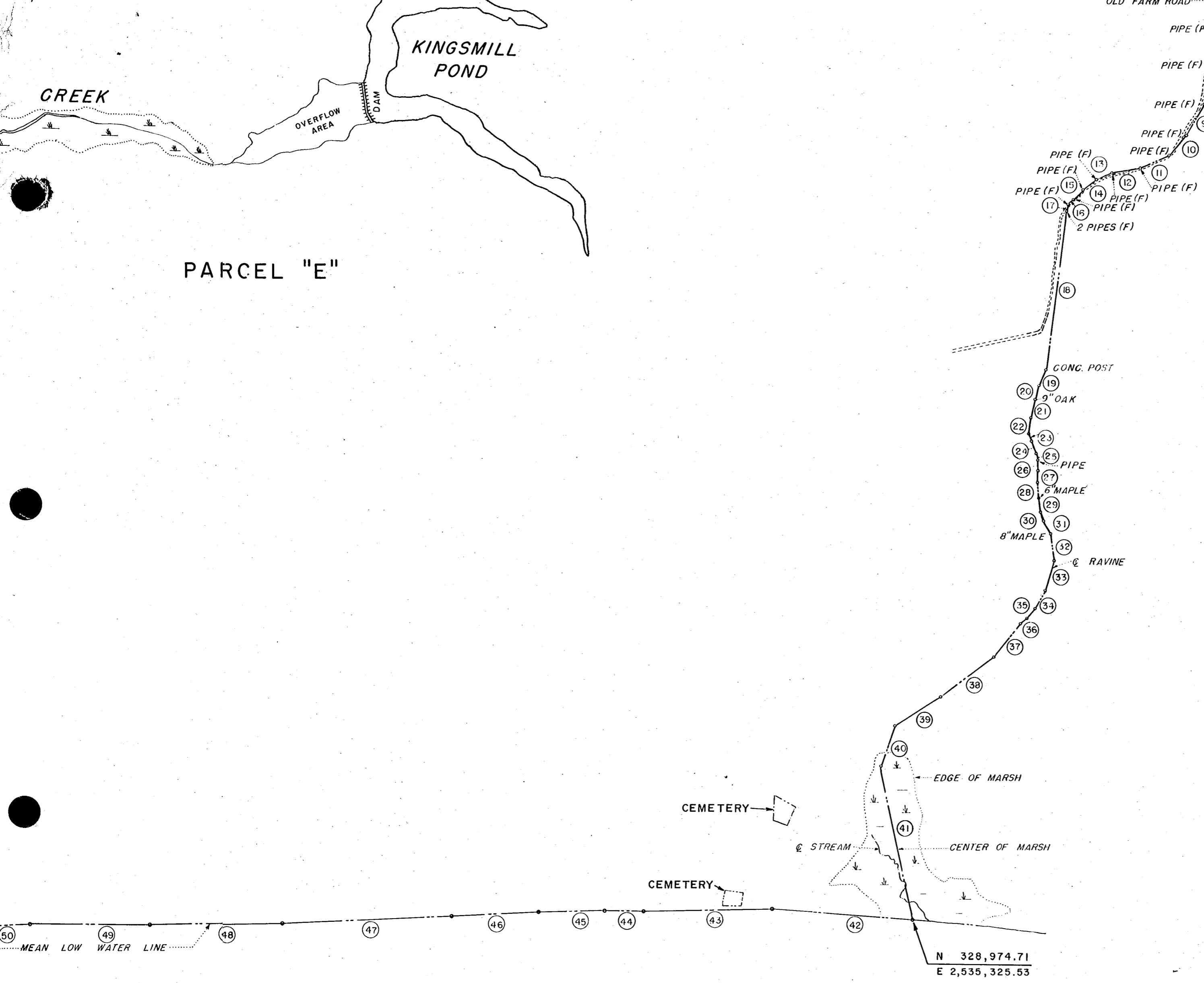


NOTE: COORDINATES ARE IN FEET AND REFER TO VIRGINIA STATE GRID, SOUTH ZONE.



NOW OR FORMERLY
ABBITT & WEST
Plat Book 27 Page 36
Recorded 11/15/70
See
DB 125 Page 101

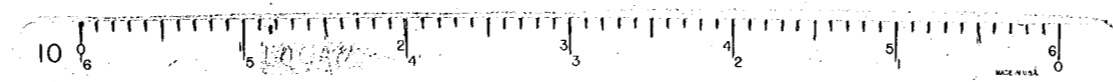
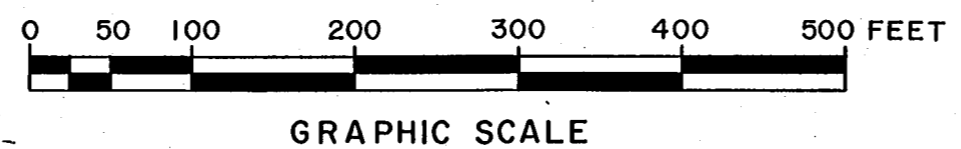
AREA LEGEND

- PARCEL "A" (COLONIAL WILLIAMSBURG, INC.)..... 6.16 ACRES
- PARCEL "B" (COLONIAL WILLIAMSBURG, INC.)..... 0.62 ACRES
- PARCEL "C" (WILLIAMSBURG RESTORATION, INC.).... 0.05 ACRES
- PARCEL "D" (" " ")...40.41 ACRES
- PARCEL "E" (WILLIAMSBURG RESTORATION, INC.):
 - 1. AREA ABOVE MEAN LOW WATER=2042.28 ACRES
 - 2. AREA BETWEEN CENTER LINE AND MEAN LOW WATER OF TUTTERS NECK CREEK = 3.05 ACRES
 - 3. AREA BETWEEN CENTER LINE AND MEAN LOW WATER OF HALFWAY CREEK = 0.90 ACRES
 - 4. AREA BELOW MEAN LOW WATER OF KINGSMILL CREEK = 10.10 ACRES
 - 5. AREA BELOW MEAN LOW WATER OF UNNAMED CREEKS = 0.80 ACRES

TOTAL AREA = 2057.11 ACRES
TOTAL AREA = 2104.35 ACRES

TUTTERS NECK CREEK PARCEL COMPOSED OF:
PARCEL "F" (WILLIAMSBURG RESTORATION, INC.) 48.36 ACRES
PARCEL "G" (COLONIAL WILLIAMSBURG, INC.) 1.39 ACRES
TOTAL AREA = 49.75 ACRES
TOTAL AREA = 2154.10 ACRES

PLAT OF
PROPERTY OF
WILLIAMSBURG RESTORATION, INC.
AND
COLONIAL WILLIAMSBURG, INC.
YORK COUNTY, VIRGINIA
AND
JAMES CITY COUNTY, VIRGINIA
TO BE CONVEYED TO
ANHEUSER-BUSCH, INC
SCALE: 1" = 400' DECEMBER 31, 1969
BALDWIN AND GREGG
ENGINEERS - SURVEYORS - PLANNERS
NORFOLK, VIRGINIA



REVISED: JAN. 7, 1970