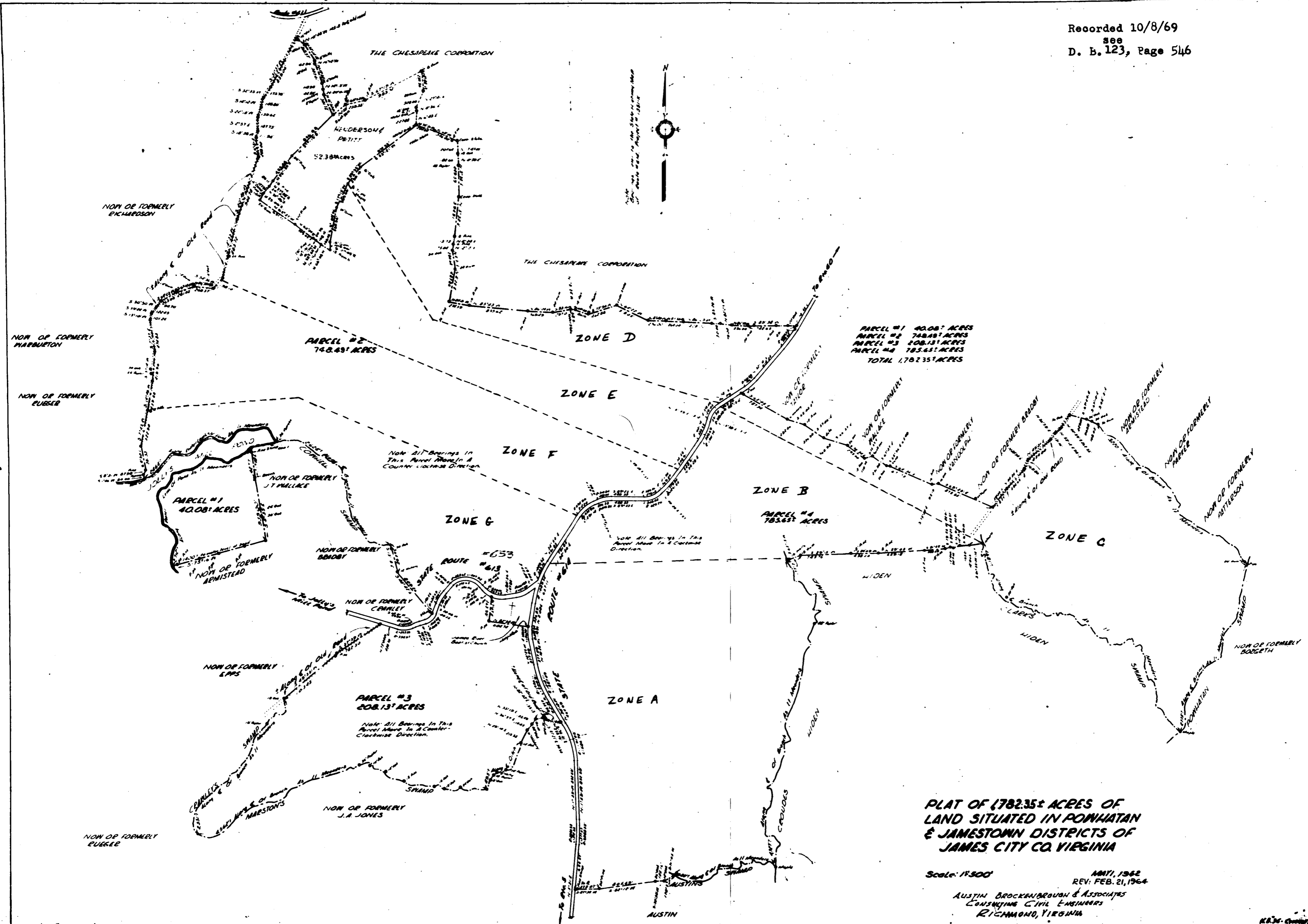


Recorded 10/8/69
566
D. B. 123, Page 546



**PLAT OF 1782.35± ACRES OF
 LAND SITUATED IN PONHATAN
 & JAMESTOWN DISTRICTS OF
 JAMES CITY CO. VIRGINIA**

Scale: 1"=500'
 MAY, 1962
 REV. FEB. 21, 1964
 AUSTIN BROCKENBROUGH & ASSOCIATES
 CONSULTING CIVIL ENGINEERS
 RICHMOND, VIRGINIA