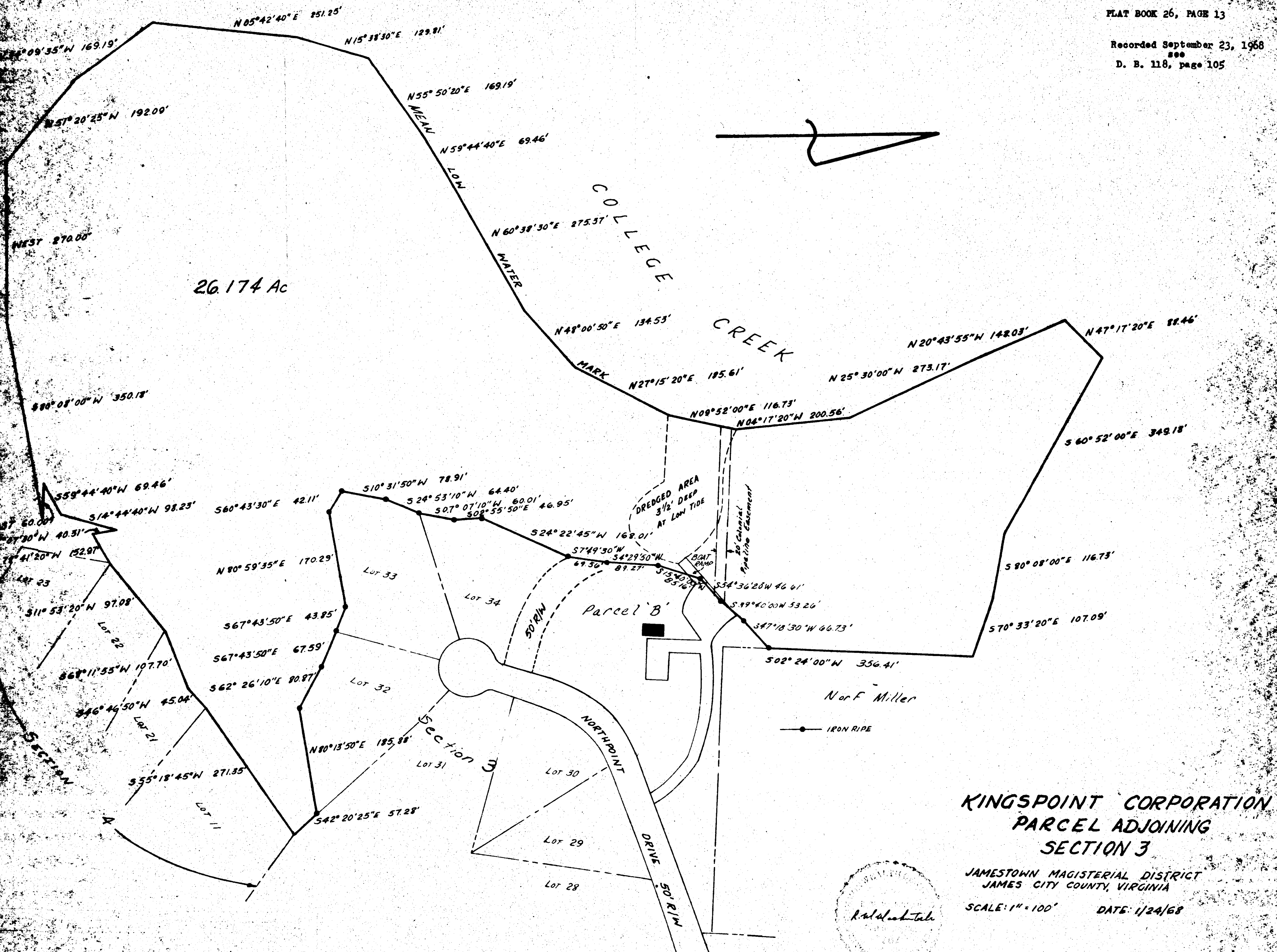
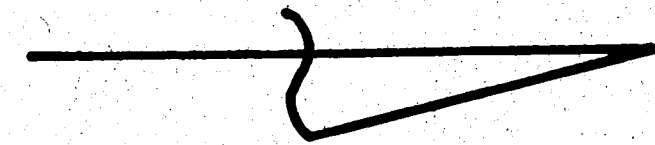


Recorded September 23, 1968
see
D. B. 118, page 105

26.174 Ac



**KINGSPPOINT CORPORATION
PARCEL ADJOINING
SECTION 3**

JAMESTOWN MAGISTERIAL DISTRICT
JAMES CITY COUNTY, VIRGINIA
SCALE: 1" = 100' DATE: 1/24/68

E. E. PAINE
CONSULTING ENGINEER
NEWPORT NEWS, VIRGINIA

