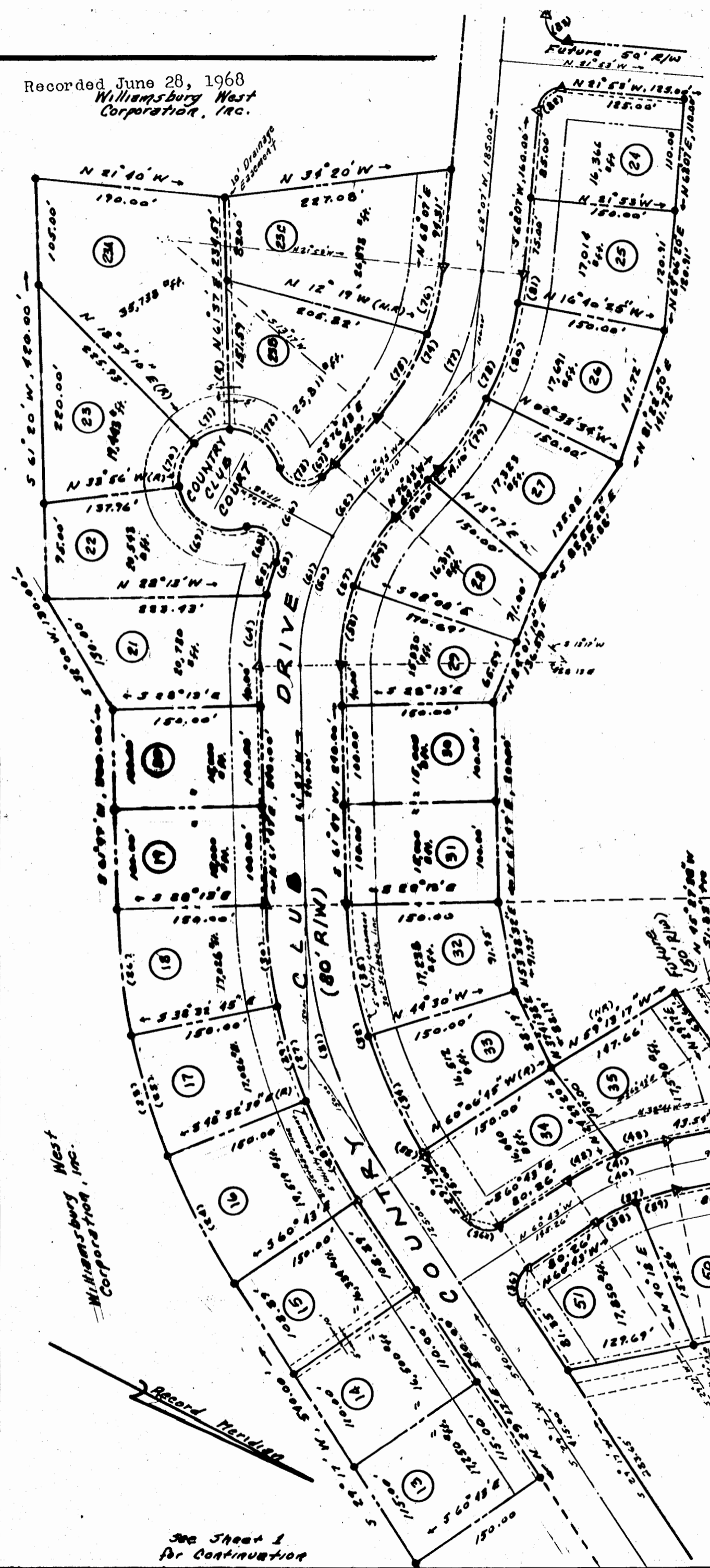


Recorded June 28, 1968  
Williamsburg West Corporation, Inc.



CURVE DATA TABLE													
No.	Radius	Delta	Arc	Tangent	Chord	Chord Bearing	No.	Radius	Delta	Arc	Tangent	Chord	Chord Bearing
23	704.63	32 30 00	399.69	205.38	399.35	S 45 32 00 N	54	192.90	16 00 00	53.87	27.11	53.69	N 49 19 00 E
24	704.63	11 50 30	145.63	73.08	145.37	S 35 12 15 W	55	167.90	16 00 00	46.87	23.60	46.79	S 49 19 00 W
25	704.63	10 19 45	127.03	63.68	126.85	S 46 17 22 W	56	142.90	16 00 00	39.71	20.08	39.78	S 49 19 00 W
26	704.63	10 19 45	127.03	63.68	126.85	S 56 37 07 W	57	223.94	41 30 00	162.20	84.84	158.48	S 82 32 00 W
27	554.63	32 30 00	314.60	161.44	310.40	N 45 32 00 E	58	223.94	20 45 00	81.10	41.00	80.66	S 72 09 30 W
28	554.63	11 50 30	114.63	57.52	114.43	N 35 12 15 E	59	223.94	20 45 00	81.10	41.00	80.66	N 87 05 30 W
29	554.63	10 19 45	100.00	50.12	99.85	N 46 17 22 E	60	263.94	41 30 00	191.17	100.00	187.02	S 82 32 00 W
30	554.63	10 19 45	100.00	50.12	99.85	N 56 37 07 E	61	263.94	29 19 00	135.05	69.04	133.58	S 76 20 30 N
31	514.63	32 30 00	291.91	150.00	288.01	S 45 32 00 W	62	263.94	12 11 00	56.12	28.17	56.02	N 82 48 30 W
32	474.63	32 30 00	269.23	138.84	265.63	S 45 32 00 W	63	303.94	41 30 00	220.15	115.15	215.97	S 82 32 00 W
33	474.63	00 36 16	5.01	2.51	5.01	S 29 35 08 N	64	303.94	13 51 52	73.55	36.95	73.37	N 68 42 54 E
34	474.63	15 36 44	127.33	65.07	128.93	S 37 41 38 W	65	303.94	04 42 33	35.59	17.81	35.87	N 79 00 08 E
35	474.63	16 17 00	134.89	67.90	134.44	S 53 38 30 W	66	303.94	17 29 10	92.74	46.74	92.40	S 88 54 00 E
36	85.00	90 00 00	39.27	85.00	35.36	S 79 17 00 W	67	303.94	03 26 25	18.25	9.13	18.85	S 78 24 18 E
37	231.83	22 02 00	89.15	45.13	88.60	N 49 42 00 W	68	85.00	129 26 48	56.48	52.94	45.21	N 17 38 01 E
38	231.83	11 01 00	44.58	22.36	44.51	N 55 12 30 W	69	50.00	103 09 23	90.02	63.08	78.38	N 04 29 18 E
39	231.83	11 01 00	44.58	22.36	44.51	N 44 11 30 W	70	50.00	52 33 10	45.86	24.69	44.27	N 82 30 38 E
40	254.83	22 02 00	98.77	50.00	98.16	N 49 42 00 W	71	50.00	42 59 50	37.52	19.69	36.65	S 49 58 58 E
41	281.83	22 02 00	108.88	54.87	107.71	S 49 42 00 E	72	50.00	77 40 23	67.78	40.25	62.71	S 10 27 11 W
42	281.83	11 01 00	54.19	27.18	54.11	S 55 12 30 E	73	85.00	129 26 48	56.48	52.94	45.21	S 15 26 01 E
43	281.83	11 01 00	54.19	27.18	54.11	S 44 11 30 E	74	275.86	35 10 00	169.13	87.32	166.49	S 85 42 00 W
44	26.85	90 00 00	42.18	26.85	37.97	S 83 41 00 E	75	275.86	20 10 00	96.79	49.00	96.49	S 86 48 00 E
45	154.78	22 02 00	59.52	30.13	59.16	N 40 18 00 E	76	275.86	15 00 00	72.14	36.28	71.99	N 75 39 00 E
46	179.78	22 02 00	69.14	35.00	68.71	S 40 18 00 W	77	315.56	35 10 00	199.68	100.00	190.64	S 85 42 00 W
47	204.78	22 02 00	78.75	39.87	78.26	S 40 18 00 W	78	355.56	35 10 00	218.23	112.63	214.82	S 85 42 00 W
48	26.85	90 00 00	42.18	26.85	37.97	S 06 19 00 W	79	355.56	13 50 33	85.90	43.16	85.69	N 83 58 14 W
49	78.00	100 00 00	130.90	89.88	114.91	S 88 41 00 E	80	355.56	16 04 52	100.00	50.33	99.47	S 81 23 01 W
50	100.00	100 00 00	174.53	119.18	153.21	N 88 41 00 N	81	355.56	05 12 35	32.33	16.17	32.38	S 74 43 18 N
51	125.00	100 00 00	218.17	148.97	191.51	N 88 41 00 N	82	25.00	90 00 00	39.27	25.00	38.96	N 66 39 00 W
52	125.00	32 00 00	67.81	38.84	68.71	N 54 41 00 W	83	25.00	90 00 00	39.27	25.00	38.96	S 15 48 00 E
53	125.00	68 00 00	148.35	84.81	139.30	S 77 19 00 W							

Williamsburg West Corporation, Inc.

MARTIN, CLIFFORD & ASSOCIATES  
Engineers & Consultants  
P.O. Box 344 Williamsburg, Virginia

**Williamsburg West**  
Section "One" - "A"  
Williamsburg West Corporation, Inc.  
Owner - Developer  
Berkeley Magisterial District  
James City County Virginia  
Scale: 1" = 100'  
May 1968  
Sheet 2 of 2

Williamsburg West Corporation, Inc.  
Commercial Area

See Sheet 1 for Continuation