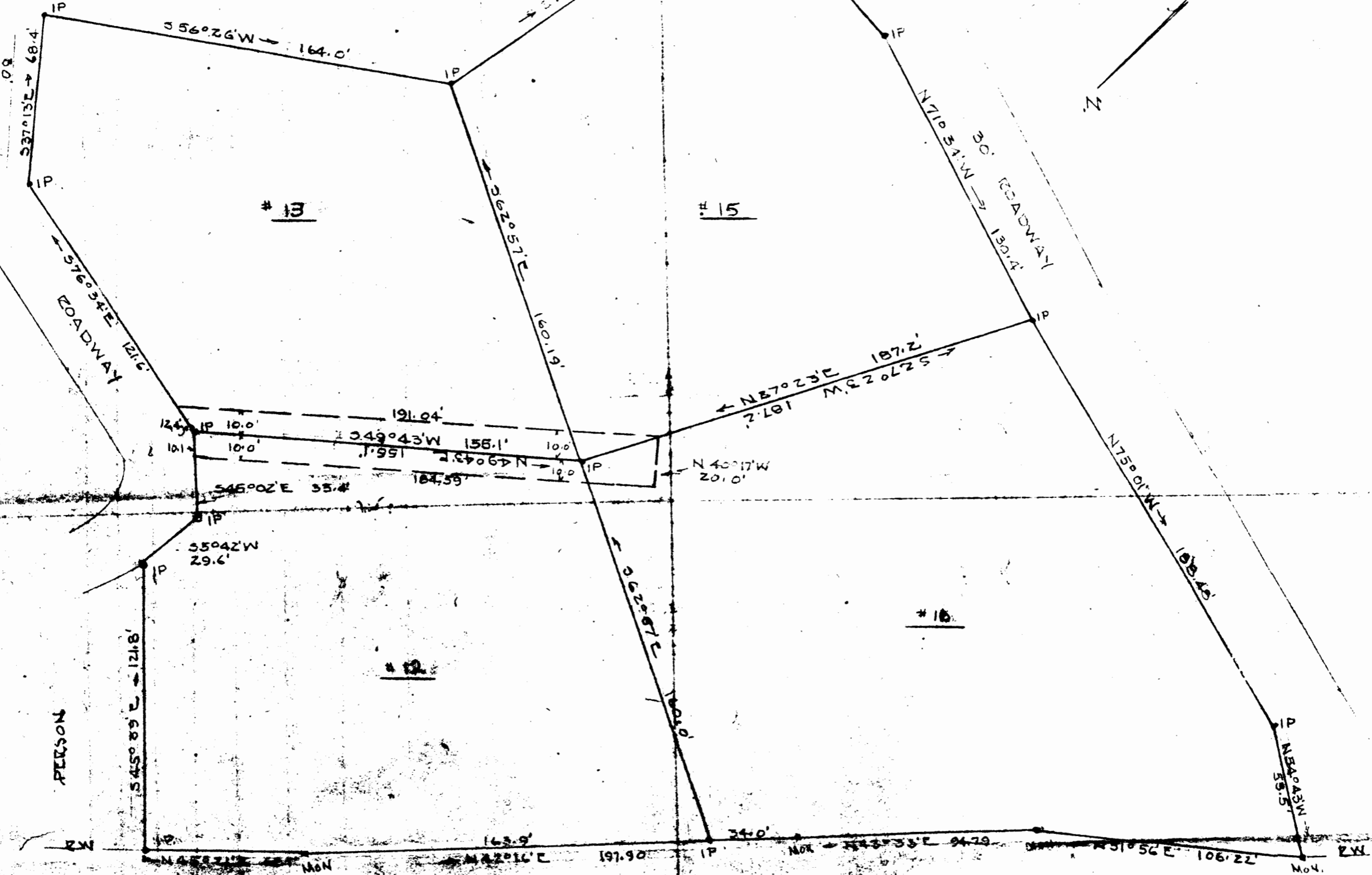


TERRELL



NOTE —

SUBJECT TO V.E.P. EASEMENTS
 AREA UPON WHICH WATER PUMPING, STORAGE
 FACILITIES AND RIGHT OF INGRESS & EGRESS
 IS TO BE RETAINED IS SHOWN THUS —

PLAT SHOWING SURVEY OF LOTS
 NO. 12, 13, 15, 16, "THE COLONY"
 SUBDIVISION, SITUATED IN JAMES CITY
 COUNTY VIRGINIA

AUGUST, 1949 SCALE 1" = 40'
 REVISED MAY 21, 1952 V.D.M.M.