

PROPERTY OF GROGAN CORPORATION  
 PROPERTY OF ANNA MARIE YANCEY & ELOISE A. YANCEY,  
 TRUSTEES FOR JOHN P. YANCEY, III & ROBERT E. YANCEY,  
 BOTH INFANTS  
 JAMES CITY COUNTY, VIRGINIA

163.5 Total Acres in Tract JC-24

Property of Anna Marie Yancey & Eloise A. Yancey,  
 Trustees for John P. Yancey, III & Robert E. Yancey,  
 Both Infants.

.770 Total Acres in Perm. R/W  
 1.840 Total Acres in Temp. Esmt.  
 127.09 Total Roddage

Property of Anna Marie Yancey & Eloise A. Yancey,  
 Trustees for Robert E. Yancey, Lots 35 & 36;  
 29 & 30.

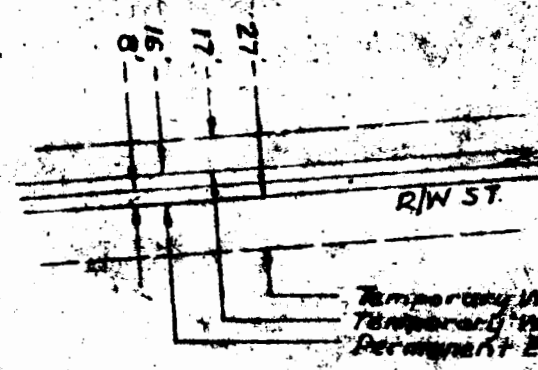
.107 Total Acres in Perm. R/W  
 .351 Total Acres in Temp. Esmt.  
 17.75 Total Roddage

Property of Anna Marie Yancey & Eloise A. Yancey,  
 Trustees for John P. Yancey, III, Lot 31.

0.00 Total Acres in Perm. R/W  
 .047 Total Acres in Temp. Esmt.  
 0.00 Total Roddage

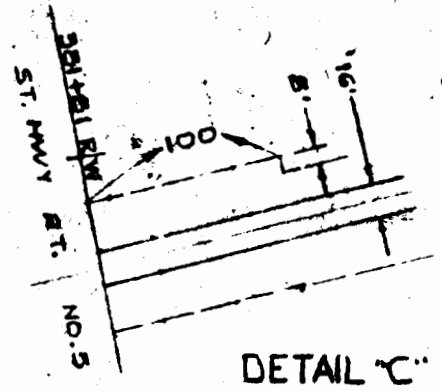
Property of Grogan Corporation, Lots 28 & 24.

.096 Total Acres in Perm. R/W  
 .277 Total Acres in Temp. Esmt.  
 16.00 Total Roddage

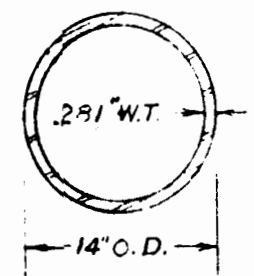
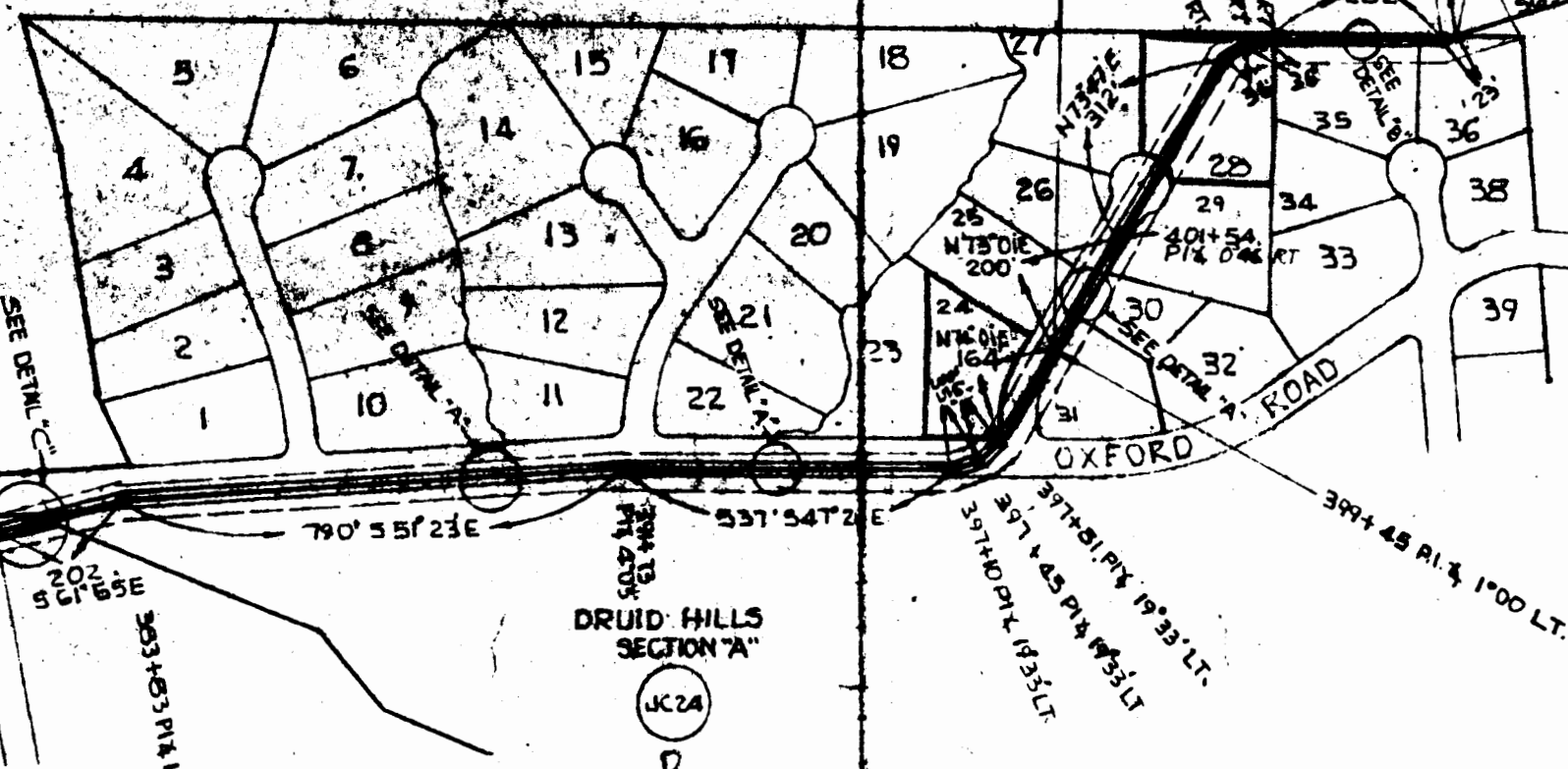


DETAIL "A"  
 SCALE: 1" = 100'

DETAIL "B"  
 SCALE: 1" = 100'



DETAIL "C"  
 SCALE: 1" = 100'



Cross Section of 14" Pipe to be Installed

Approved by Bill [unclear]  
 D. [unclear] 12-19-362

References: Align. Map No. 72; Field Bk. #1230; Pages [unclear]

COLONIAL PIPELINE COMPANY ATLANTA, GEORGIA		DRAWN J.P.
△		NOTES AS NOTED
△		SCALE 1" = 300'
△		DATE 3-27-33
△	OWNERSHIP REVISED 7-22	CHECKED J.S.P.
△	LOTS ADDED ESMTS REV. 5-14	CI 490 FL 652
△	REVISION	DATE

PROPOSED 14" PRODUCTS PIPELINE CROSSING  
 PROPERTY OF GROGAN CORP. & PROPERTY OF  
 A.M. YANCEY & E.A. YANCEY, TRUSTEES FOR  
 JOHN P. YANCEY, III & ROBERT E. YANCEY  
 JAMES CITY COUNTY, VIRGINIA