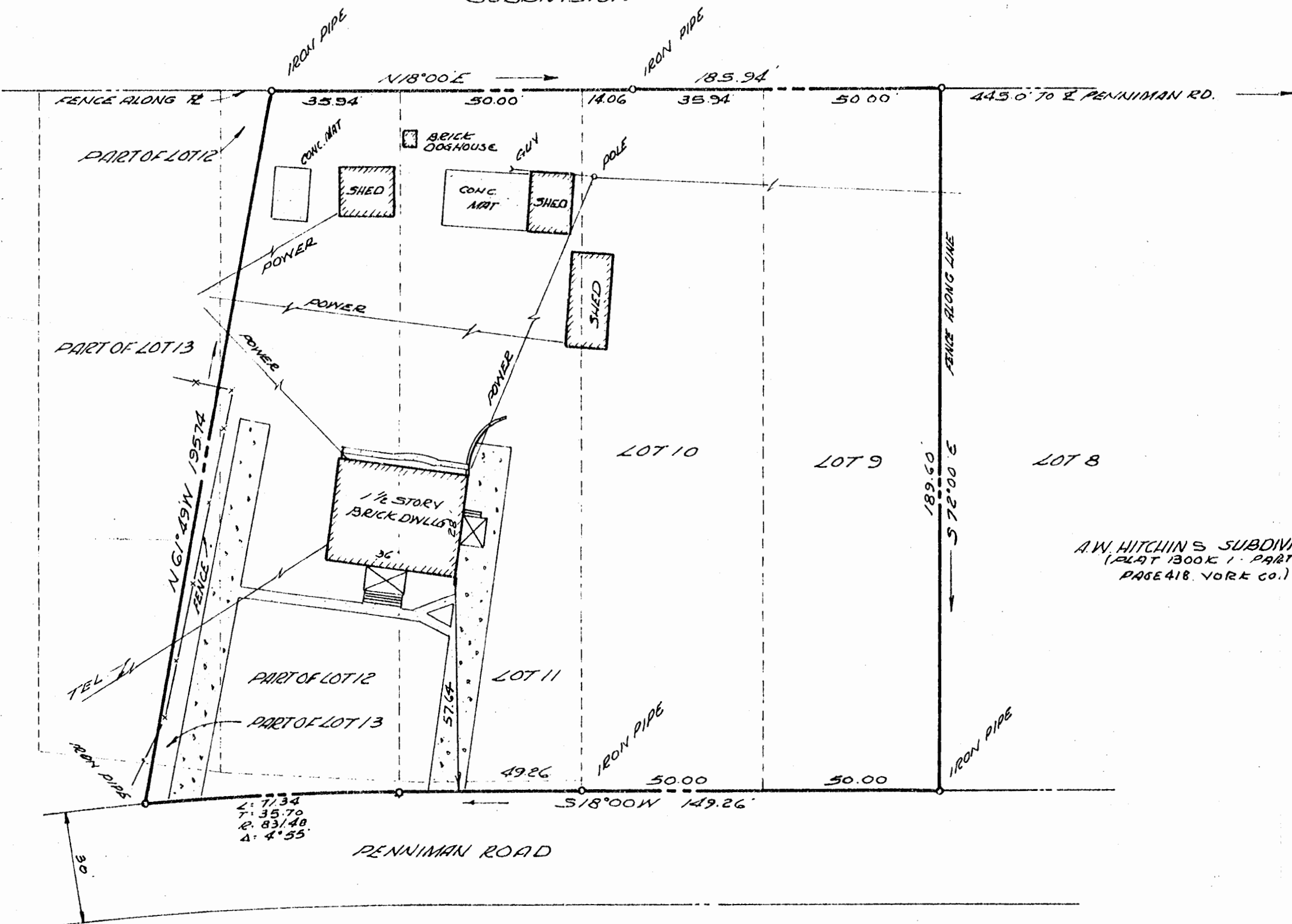


EAST WILLIAMSBURG SUBDIVISION



W.A. SCHREIBER

A.W. HITCHIN'S SUBDIVISION
(PLAT BOOK 1 - PART 2
PAGE 418, YORK CO.)

Recorded 23 day of March 1964
in
D. B. No. 36; pages 114;
W.A. Schreiber Clerk

M. MANUS, MROCK & M. MANUS
CIVIL ENGINEER AND SURVEYORS
WILLIAMSBURG, VIRGINIA

NOTE: HIGHWAY R. W. AS SHOWN IS
FROM BEST INFORMATION AVAILABLE

PLAT SHOWING SURVEY
OF A PARCEL OF LAND
TO BE CONVEYED TO
WILLIAM A. SCHREIBER III
CITY OF WILLIAMSBURG
VIRGINIA
SCALE: 1" = 30'
REV. 3/5/64
FEBRUARY 26, 1964
1363 P79