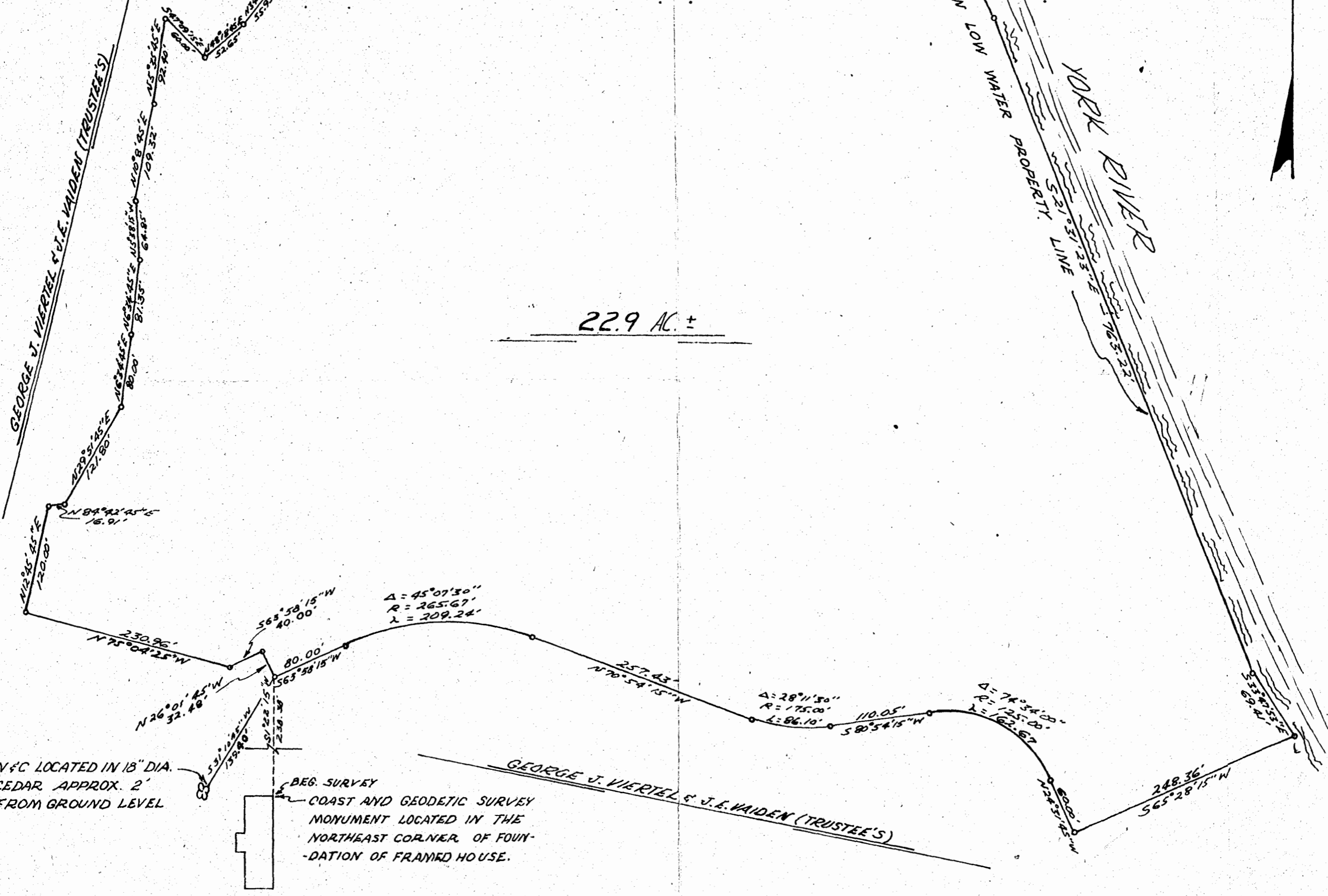
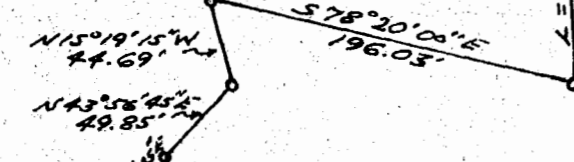
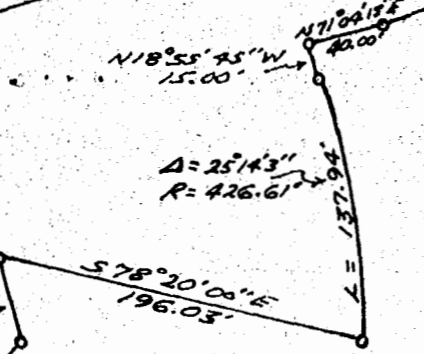


GEORGE J. VIERTEL & J.E. VAIDEN (TRUSTEE'S)

N 69° 27' 15" E
391.28'



PLAT SHOWING PROPERTY OF
GEORGE J. VIERTEL & J.E. VAIDEN
(TRUSTEE'S)

LOCATED IN STONE HOUSE MAGISTERIAL DIST.
JAMES CITY COUNTY, VA.

SCALE: 1" = 100' JUNE 1, 1962

S.V. CAMPBELL & ASSOCIATE
CERTIFIED LAND SURVEYOR COURTLAND, VA.

Recorded August 31, 1962
see
D. B. 86, page 595

