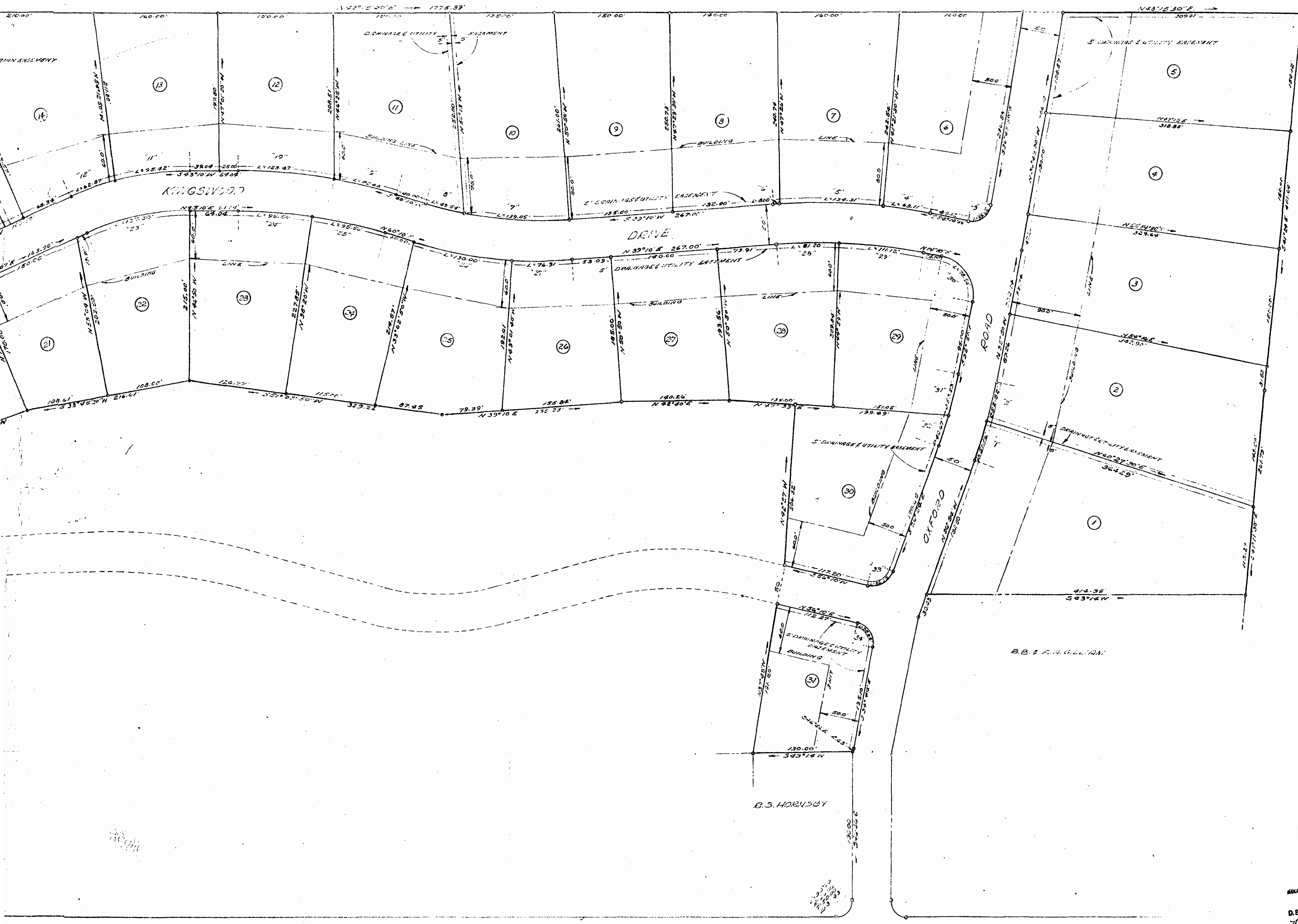


NO.	DELTA	BEARING	TRNG. LENGTH	LOT
1	122°10'	N 74°59' E	114.11	1
2	122°10'	N 74°59' E	114.11	2
3	122°10'	N 74°59' E	114.11	3
4	122°10'	N 74°59' E	114.11	4
5	122°10'	N 74°59' E	114.11	5
6	122°10'	N 74°59' E	114.11	6
7	122°10'	N 74°59' E	114.11	7
8	122°10'	N 74°59' E	114.11	8
9	122°10'	N 74°59' E	114.11	9
10	122°10'	N 74°59' E	114.11	10
11	122°10'	N 74°59' E	114.11	11
12	122°10'	N 74°59' E	114.11	12
13	122°10'	N 74°59' E	114.11	13
14	122°10'	N 74°59' E	114.11	14
15	122°10'	N 74°59' E	114.11	15
16	122°10'	N 74°59' E	114.11	16
17	122°10'	N 74°59' E	114.11	17
18	122°10'	N 74°59' E	114.11	18
19	122°10'	N 74°59' E	114.11	19
20	122°10'	N 74°59' E	114.11	20
21	122°10'	N 74°59' E	114.11	21
22	122°10'	N 74°59' E	114.11	22
23	122°10'	N 74°59' E	114.11	23
24	122°10'	N 74°59' E	114.11	24
25	122°10'	N 74°59' E	114.11	25
26	122°10'	N 74°59' E	114.11	26
27	122°10'	N 74°59' E	114.11	27
28	122°10'	N 74°59' E	114.11	28
29	122°10'	N 74°59' E	114.11	29
30	122°10'	N 74°59' E	114.11	30
31	122°10'	N 74°59' E	114.11	31
32	122°10'	N 74°59' E	114.11	32
33	122°10'	N 74°59' E	114.11	33
34	122°10'	N 74°59' E	114.11	34

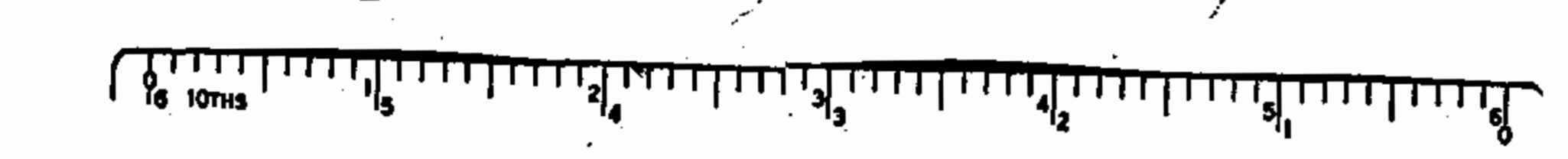


JAMESTOWN ROAD

VIRGINIA STATE HIGHWAY ROUTE NO. 31

TO WILLIAMSBURG

RECORDED 23 day of Feb 1961  
 in  
 D.B. No. 77 pages 1  
 The Bluebird Co.



"KINGSWOOD"  
 SECTION "A"  
 HERITAGE DEVELOPMENT COMPANY, OWNER  
 JAMESTOWN DISTRICT  
 JAMES CITY COUNTY, VIRGINIA.  
 SCALE 1"=50' DEC. 1, 1960.