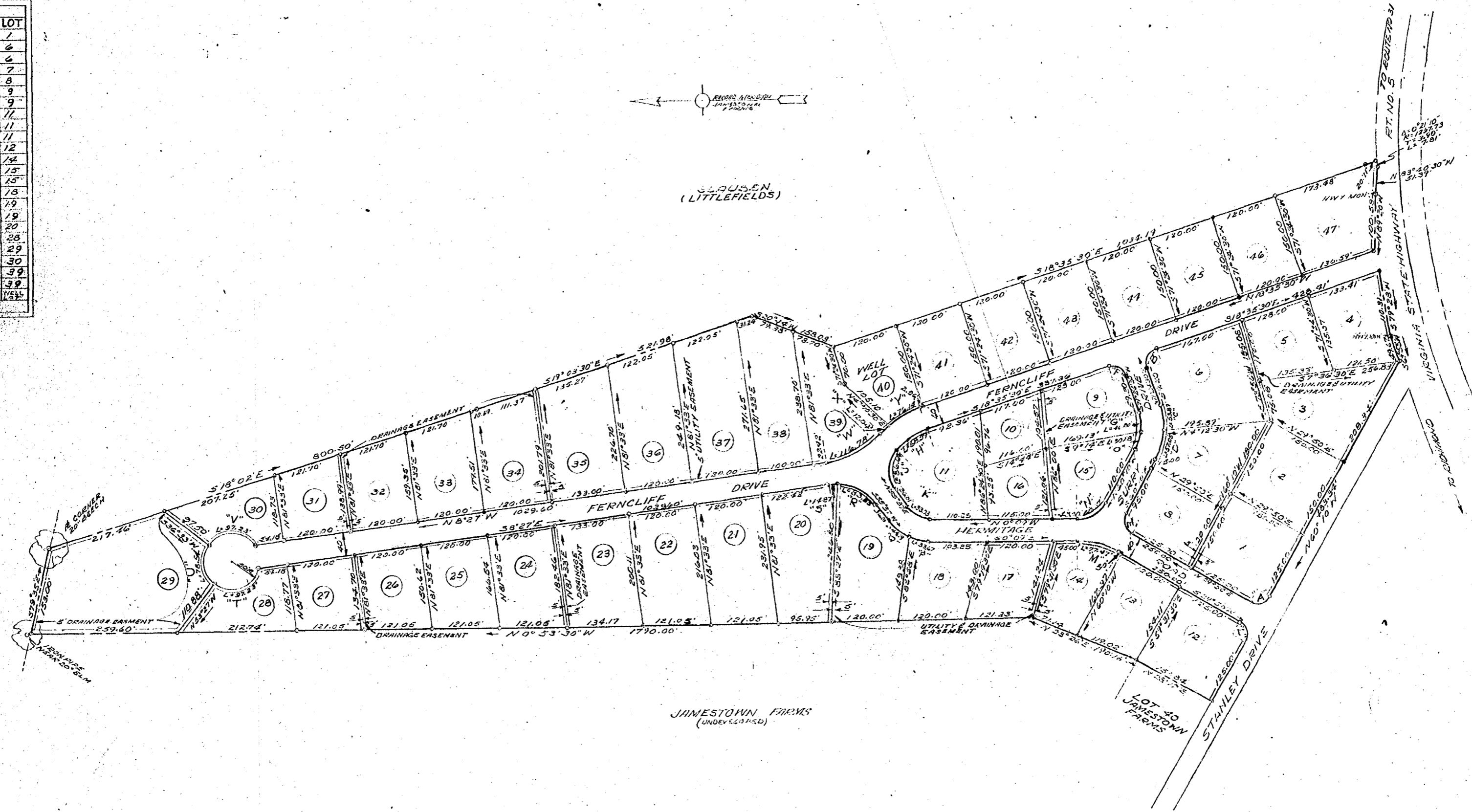


RECORDED 3/5/74.
SEE D.B. 150 p. 544 in -w- Lot 10 & Lot 16.

NO	DELTA	RADIUS	TANG.	LENGTH	LOT
A	90°00'	25.00'	25.00'	39.27'	1
B	90°00'	25.00'	25.00'	39.27'	6
C	25°31'33"	131.20'	27.32'	53.87'	6
D	24°54'	131.20'	28.97'	57.05'	7
E	90°00'	25.00'	25.00'	39.27'	8
F	90°00'	25.00'	25.00'	39.27'	9
G	28°24'	91.20'	23.93'	46.80'	9
H	20°04'	140.03'	35.00'	68.59'	11
J	77°33'56"	63.87'	31.47'	86.64'	11
K	54°46'	40.00'	21.16'	38.93'	11
L	90°00'	25.00'	25.00'	39.27'	12
M	29°39'	148.04'	39.44'	77.47'	14
N	20°01'	579.2'	33.43'	106.61'	15
O	19°13'	91.20'	15.28'	30.28'	15
P	24°07'	80.00'	17.09'	33.67'	18
Q	31°35'	80.00'	22.66'	41.19'	19
R	54°23'	98.01'	25.21'	53.53'	19
S	9°37'	88.01'	7.28'	14.84'	20
T	111°23'	50.00'	73.32'	97.23'	28
U	90°00'	50.00'	50.00'	70.54'	29
V	111°23'	50.00'	73.32'	97.23'	30
W	36°23'	175.512'	40.25'	116.73'	39
X	3°30'	180.03'	6.02'	12.04'	39
Y	24°14'	180.03'	15.28'	76.14'	39



M. MANUS, FROCK & M. MANUS
CIVIL ENGINEERS AND SURVEYORS
WILLIAMSBURG, VIRGINIA

NOTE:
IRON PIPE MARKERS SHOWN THIS -
LOTS 16, 17, 18, 19, 20, 21, 22, 23, 24, 25, 26, 27, 28, 29, 30, 31, 32, 33, 34, 35, 36, 37, 38, 39, 40, 41, 42, 43, 44, 45, 46, 47, 48, 49, 50, 51, 52, 53, 54, 55, 56, 57, 58, 59, 60, 61, 62, 63, 64, 65, 66, 67, 68, 69, 70, 71, 72, 73, 74, 75, 76, 77, 78, 79, 80, 81, 82, 83, 84, 85, 86, 87, 88, 89, 90, 91, 92, 93, 94, 95, 96, 97, 98, 99, 100.

RECORDED 14 day of Oct 1960
in
D.B. No. 76; pages
Va. Blankard

CANTERBURY HILLS
SUBDIVISION
JOSEPH S. TERRELL, OWNER
JAMESTOWN DISTRICT
JAMES CITY COUNTY
VIRGINIA
SCALE 1"=100'
NOVEMBER 1, 1960
REV. AUG. 15, 1960.