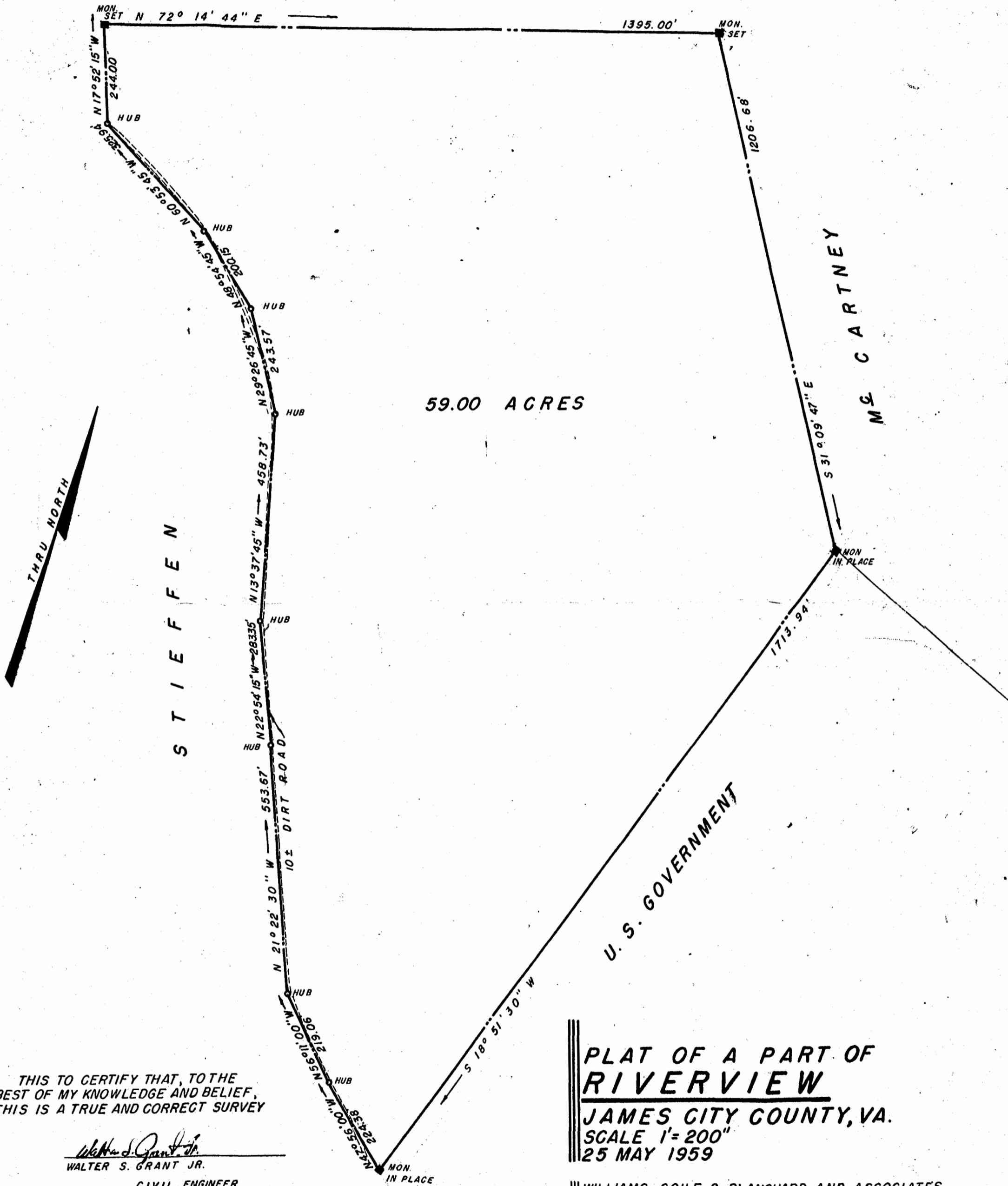
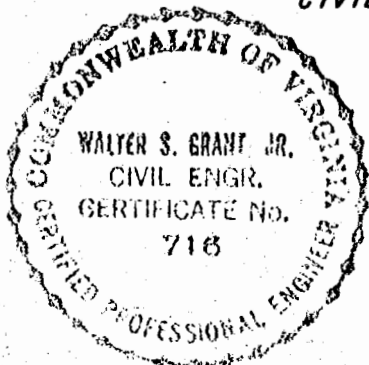


M<sup>c</sup> C A R T N E Y



THIS TO CERTIFY THAT, TO THE BEST OF MY KNOWLEDGE AND BELIEF, THIS IS A TRUE AND CORRECT SURVEY

*Walter S. Grant Jr.*  
 WALTER S. GRANT JR.  
 CIVIL ENGINEER



PLAT OF A PART OF  
**RIVERVIEW**  
 JAMES CITY COUNTY, VA.  
 SCALE 1" = 200'  
 25 MAY 1959

WILLIAMS, COILE & BLANCHARD AND ASSOCIATES  
 ARCHITECTS AND ENGINEERS  
 NEWPORT NEWS, VA.



GRAPHIC SCALE

Recorded July 26, 1960

D. B. 75, page 437