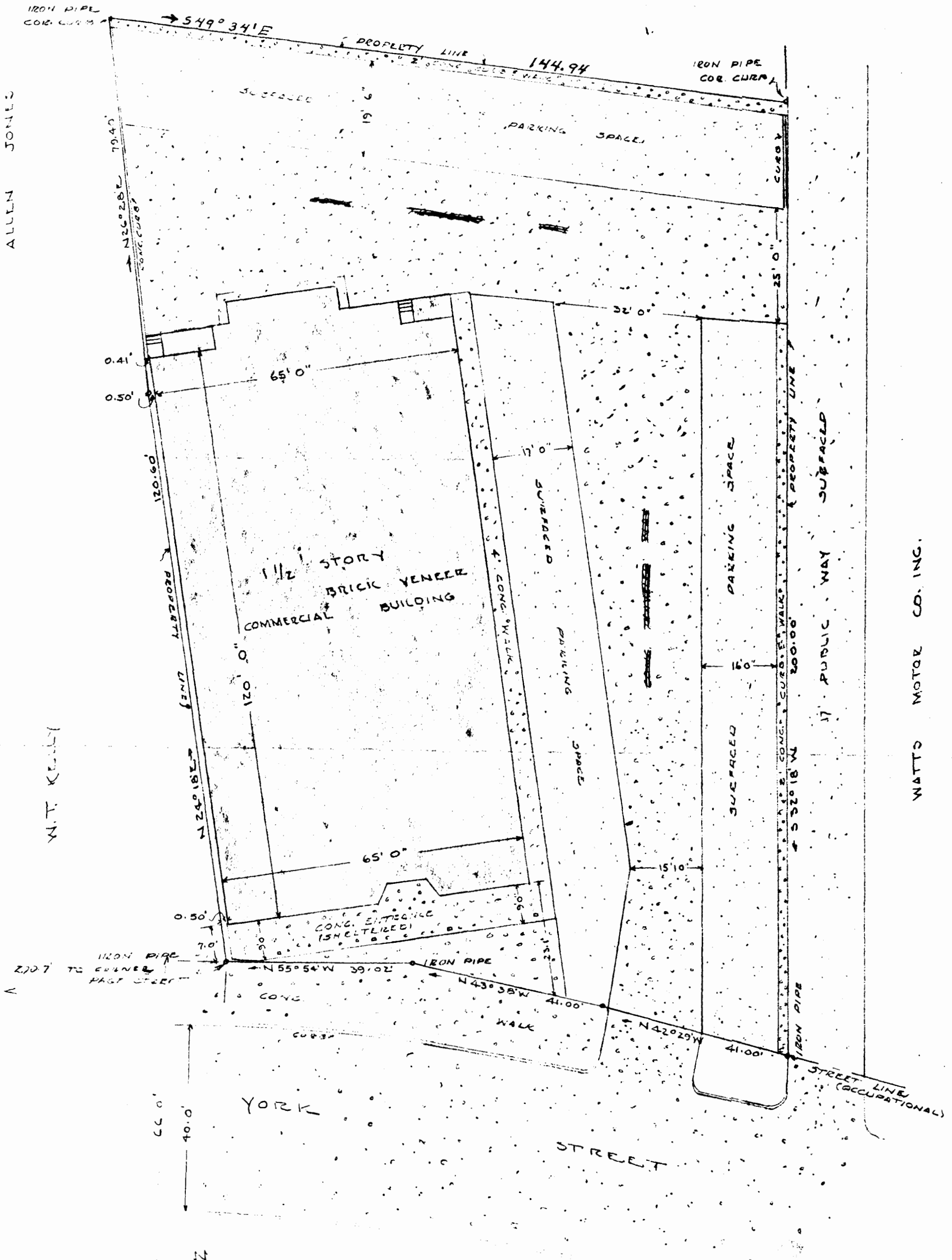


G. T. BROOKS & OTHERS



ALLEN JONES

W. T. KELLY

WATTS MOTOR CO. INC.

COLONIAL STORES INCORPORATED
 — STORE NO. 1305 —
 CITY OF WILLIAMSBURG VIRGINIA
 PLAT SHOWING BOUNDARY SURVEY
 & LOCATION OF IMPROVEMENTS WITH
 REFERENCE TO PROPERTY LINES
 DEC. 26, 1951 SCALE 1" = 20'

Recorded June 18, 1959
 see
 D. B. 31, page 39
 Plat B. 17, page 32