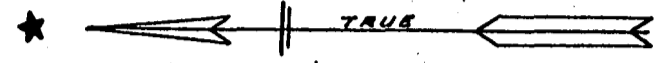


YORK COUNTY

CITY OF WILLIAMSBURG

Center of Stream is Corporate Line

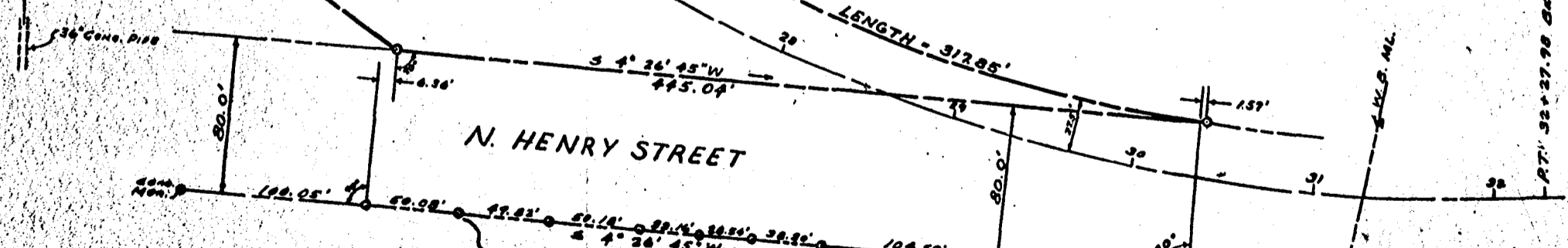


COMMONWEALTH OF VIRGINIA  
DEPARTMENT OF HIGHWAYS

WILLIAMSBURG RESTORATION, INC.

WILLIAMSBURG RESTORATION, INC.

Center of Stream is Corporate Line



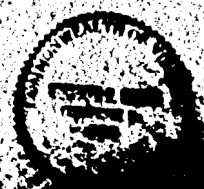
N. HENRY STREET

CHESAPEAKE AVE.  
C.F.O. Rwy Co.

NOTE: Distances Along This Line Are Marked With Iron Pipe. Exceptions As Indicated

PLAT OF LAND  
FOR CONVEYANCE TO THE  
CITY OF WILLIAMSBURG, VA.  
BY  
WILLIAMSBURG RESTORATION, INC.

RECORDED IN WILLIAMSBURG, VA.  
AND CONTAINING 1.93 ACRES



SCALE: 1" = 40 FT. OCT 27, 1956

Recorded January 9, 1957  
in  
D. B. 28, page 585